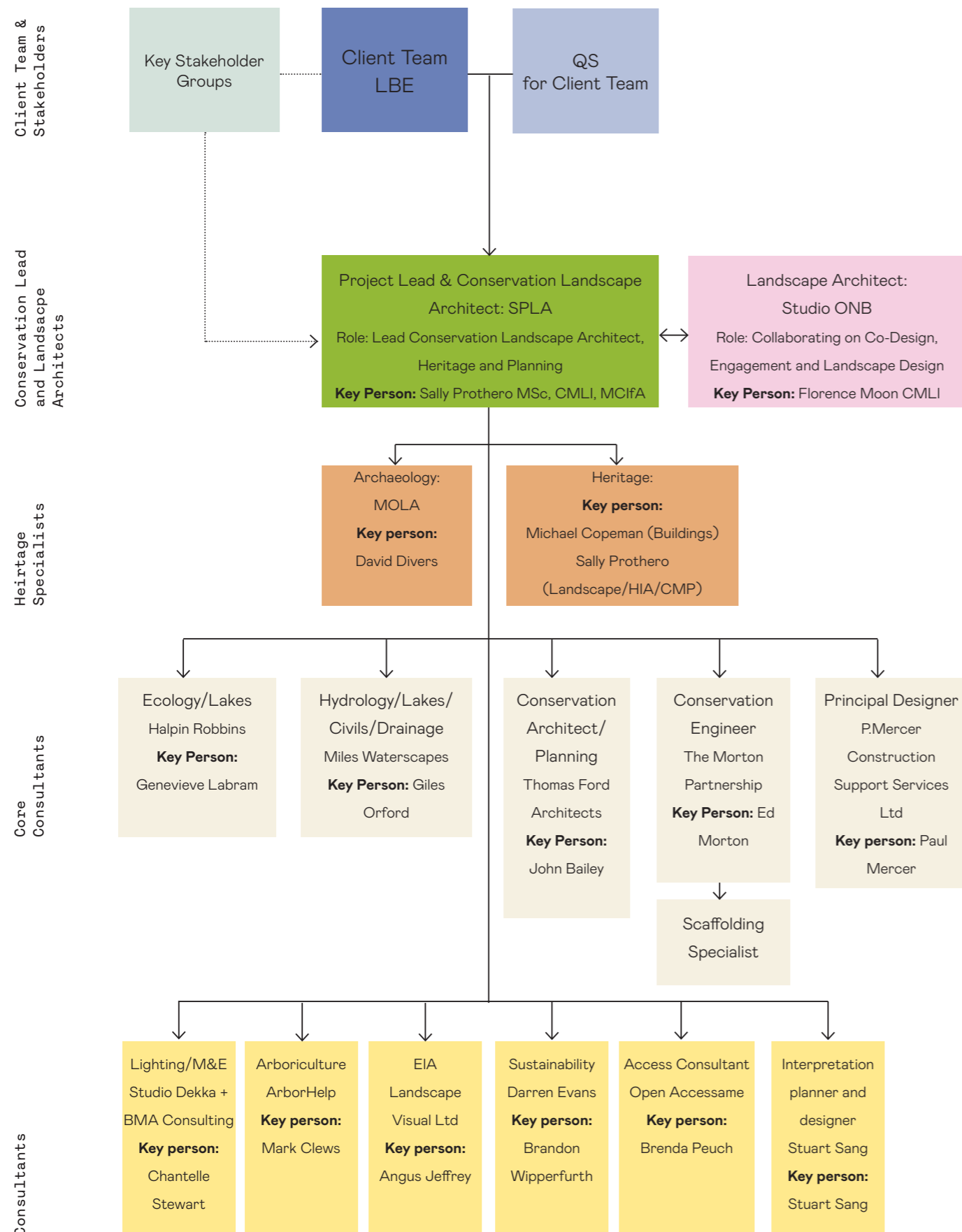


# Q1. KEY PERSONNEL AND RESOURCING

a) THE PROPOSED TEAM ALLOCATED TO WORK ON THE PROJECT, IDENTIFYING KEY MEMBERS OF STAFF AND ROLES THEY WILL BE CARRYING OUT.



b) SUMMARY CVS FOR ALL KEY MEMBERS OF THE TEAM [AT THE END OF THIS DOCUMENT]

**CONSERVATION LANDSCAPE ARCHITECT/ HERITAGE/PLANNING**  
Sally Prothero (SPLA)

**PRINCIPAL DESIGNER(CDM)**  
Paul Mercer (P.Mercer Construction)

**LANDSCAPE ARCHITECT**  
Florence Moon (Studio ONB)  
Ben Smith (Studio ONB)  
David Unterfoher (Studio ONB)

**HERITAGE**  
Michael Copeman

**ARCHAEOLOGY**  
David Divers (MOLA)

**ECOLOGY**  
Genevieve Labram (Halpin Robbins)

**HYDROLOGY/LAKES/CIVILS/DRAINAGE**  
Giles Orford (Miles Waterscapes)  
Roger Orford (Miles Waterscapes)  
Phil Cummins (Miles Waterscapes)

**CONSERVATION ARCHITECT**  
John Bailey (Thomas Ford Architects)  
Priscilla Seminario (Thomas Ford Architects)

**CONSERVATION STRUCTURAL ENGINEER**  
Ed Morton (The Morton Partnership)  
Cristian Petrescu (The Morton Partnership)

**ENVIRONMENTAL IMPACT ASSESSMENT**  
Angus Jeffrey (Landscape Visual Ltd)

**SUSTAINABILITY**  
Brandon Wipperfurth (Darren Evans)

**ACCESS CONSULTANT**  
Brenda Puech (Open Accessame)

**LIGHTING DESIGN**  
Chantelle Stewart (Studio Dekka)

**INTERPRETATION PLANNER AND DESIGNER**  
Stuart Sang (Interpretation planner)