

2021 Census

The Enfield picture

www.enfield.gov.uk

Striving for excellence

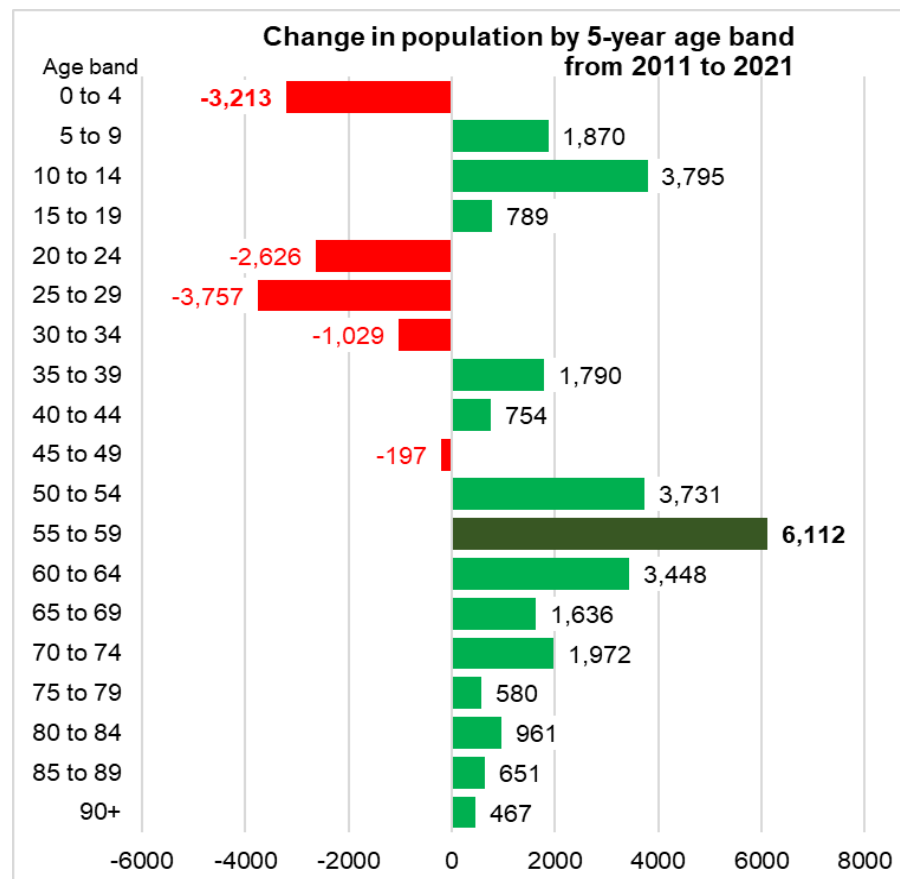


2021 Census Overview

- Census day – 21st March 2021 in England and Wales
 - During third lockdown
 - Scotland elected to defer their Census until 2022
 - First digital-first census
 - National response rate (England and Wales) was 97%
 - 89% of responses were online
 - Enfield response rate – 95% (and 95% of these were online)
 - New questions asked for the first time (respondents aged 16 years and over):
 - Whether respondents have served in the armed forces
 - Sexual Orientation
 - Gender Identity
- } Voluntary questions

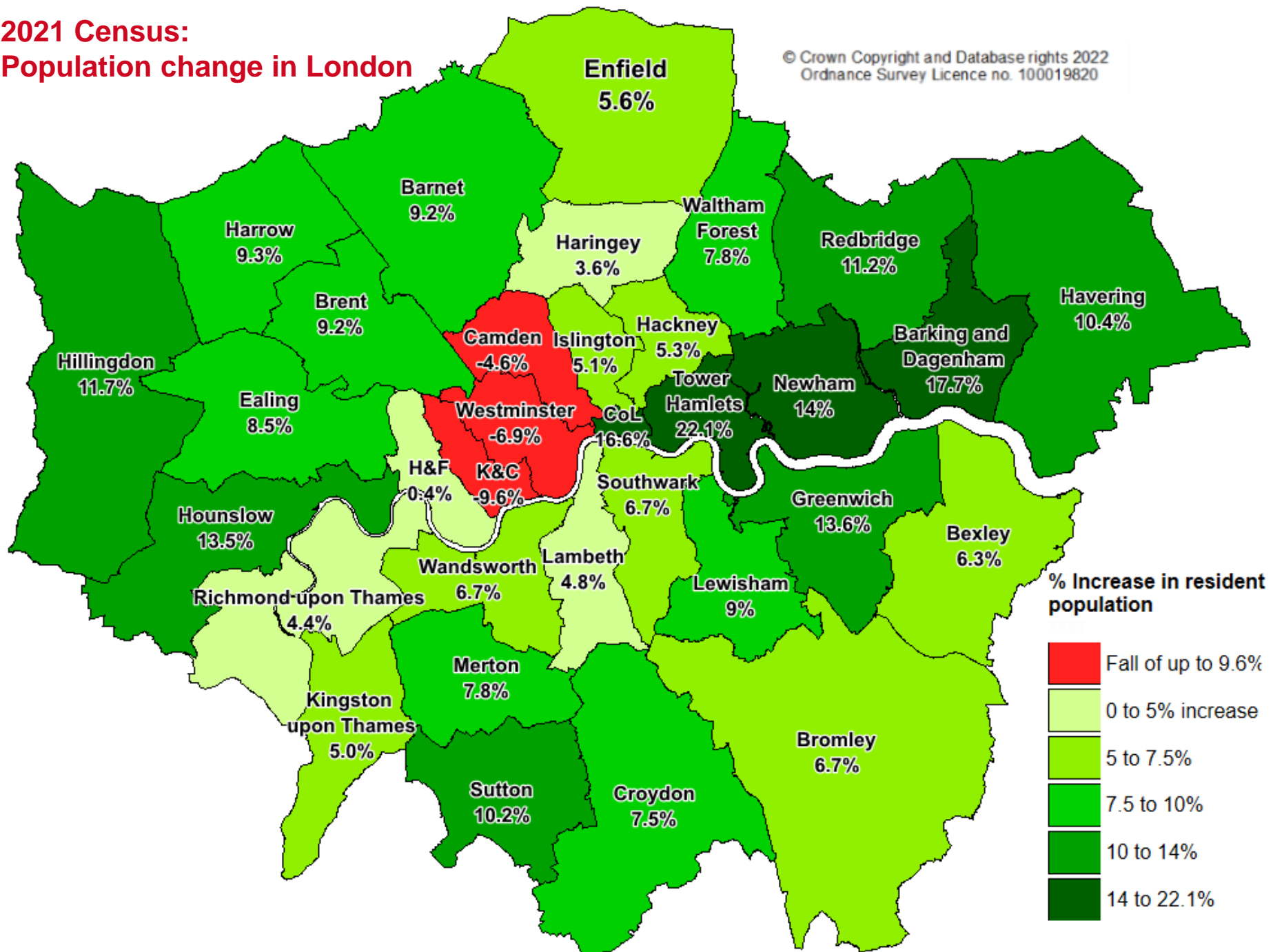
2021 Census: Population – changing age profile

- Population at Census day - **330,000** (rounded to nearest hundred)
- **Seventh highest** population of the 33 London boroughs (behind Croydon, Barnet, Ealing, Newham, Brent, and Bromley)
- Largest ward is Haselbury (18,145), smallest is Arnos Grove (8,218)
- Population grew by 17,500 (5.6%) between 2011 and 2021
- 52.3% female and 47.7% male
(SEX, not gender identity – this is dealt with separately)
- Numbers of residents have increased:
 - in every age band over 50 years
 - 35 to 44 year-olds
 - 5-9, 10-14 and 15-19 year-olds
- Numbers have fallen in all other age groups, including the under 5s
- Still relatively high numbers of children and young people aged under 20.



2021 Census: Population change in London

© Crown Copyright and Database rights 2022
Ordnance Survey Licence no. 100019820

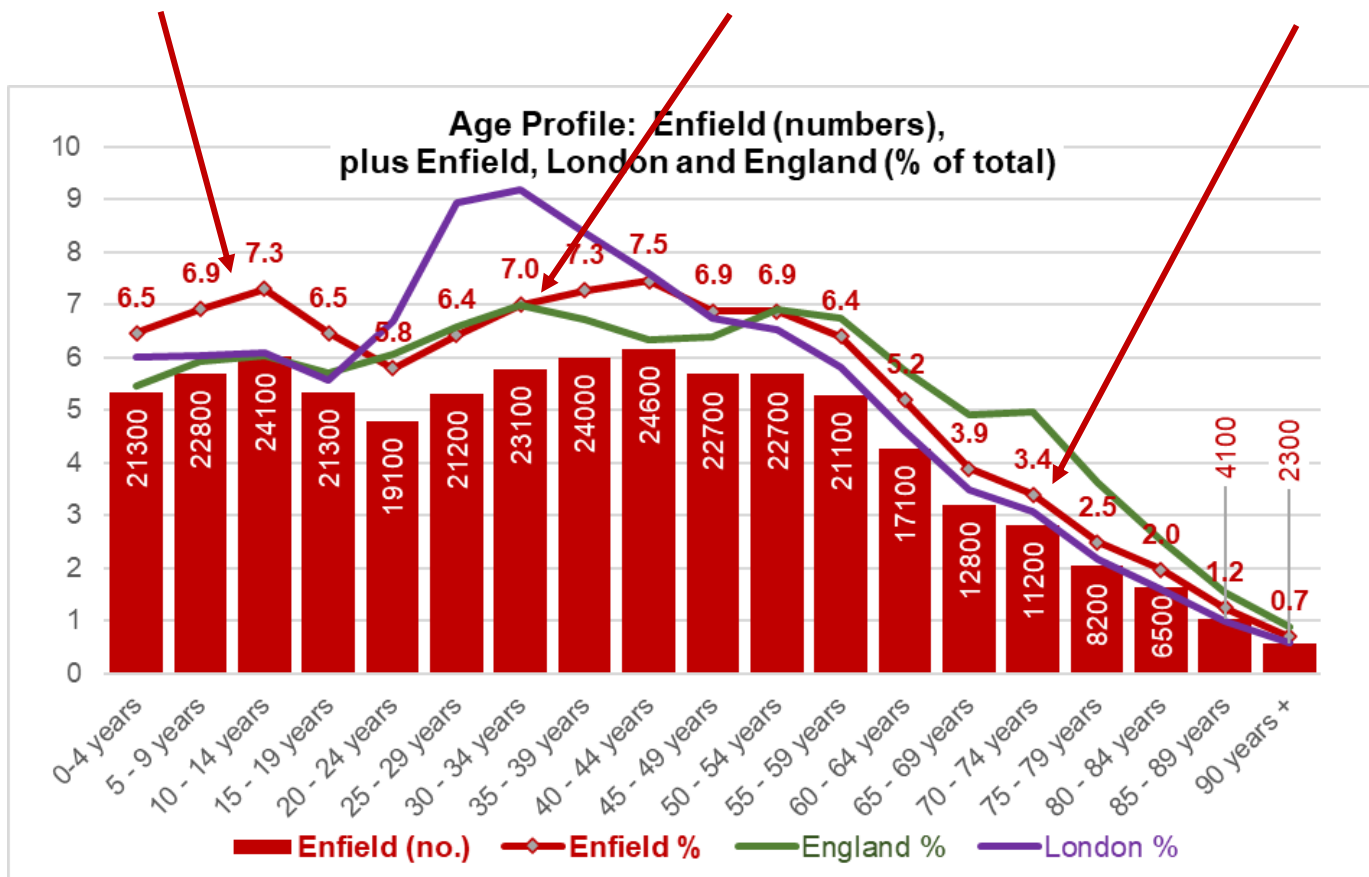


2021 Census: Enfield's Age Profile

Relatively high numbers of children aged up to 19 years

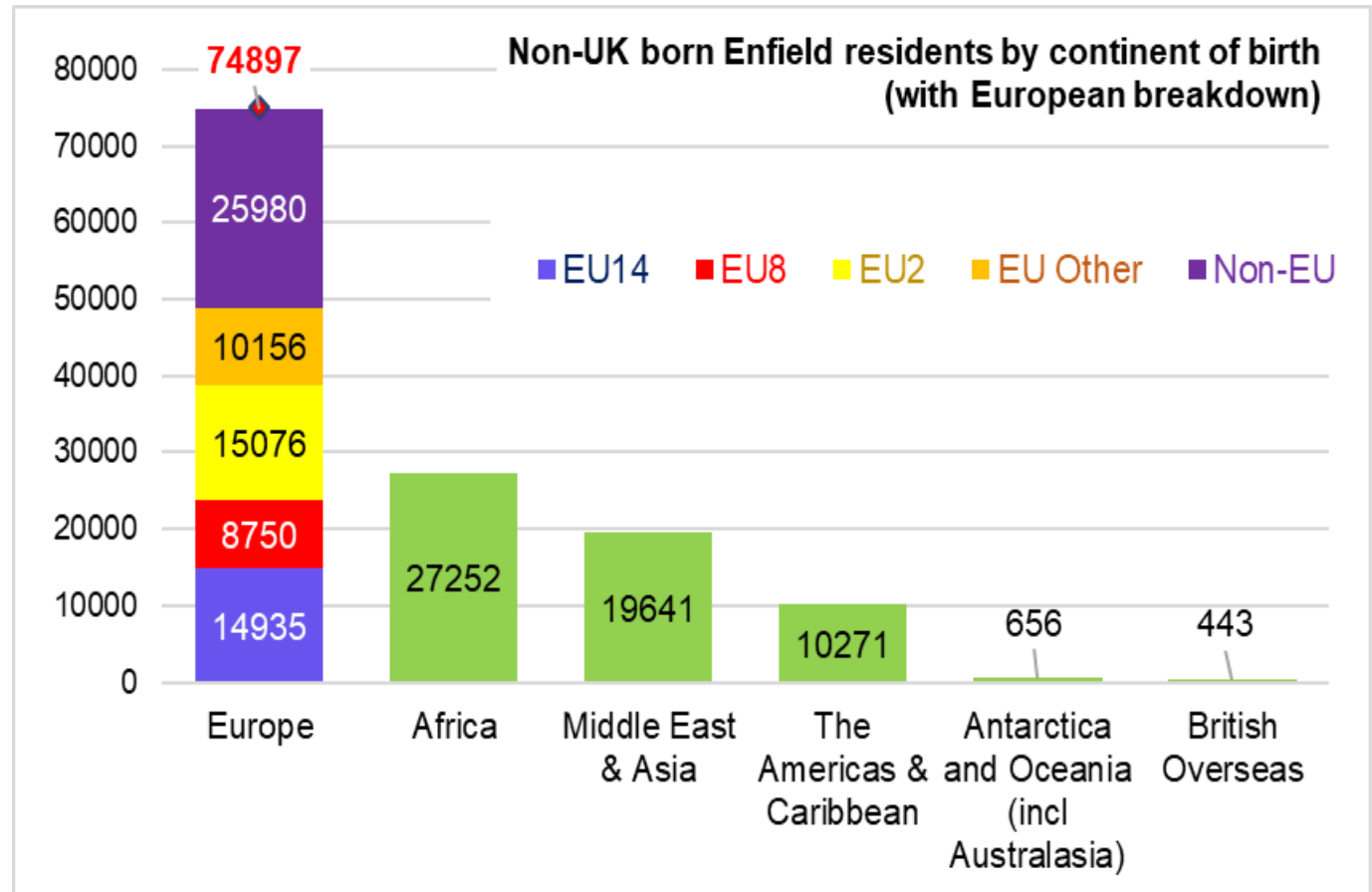
Fewer young adults (25 – 44 years) than in London on average

Fewer older people relative to the rest of England



2021 Census: Demography & Migration

- 40% of residents (133,160) were born outside the UK –
 - most of these (75,000) in European nations (not all EU members).
- Over 15,000 people were born in Romania and Bulgaria (the EU2 nations)
- There were also over 17,000 residents born in Turkey.
- European-born residents outnumber all those born in Africa, the Middle East and Asia combined.



2021 Census: Ethnicity

Detailed ethnic group breakdown (34 groups) shown in table (right)

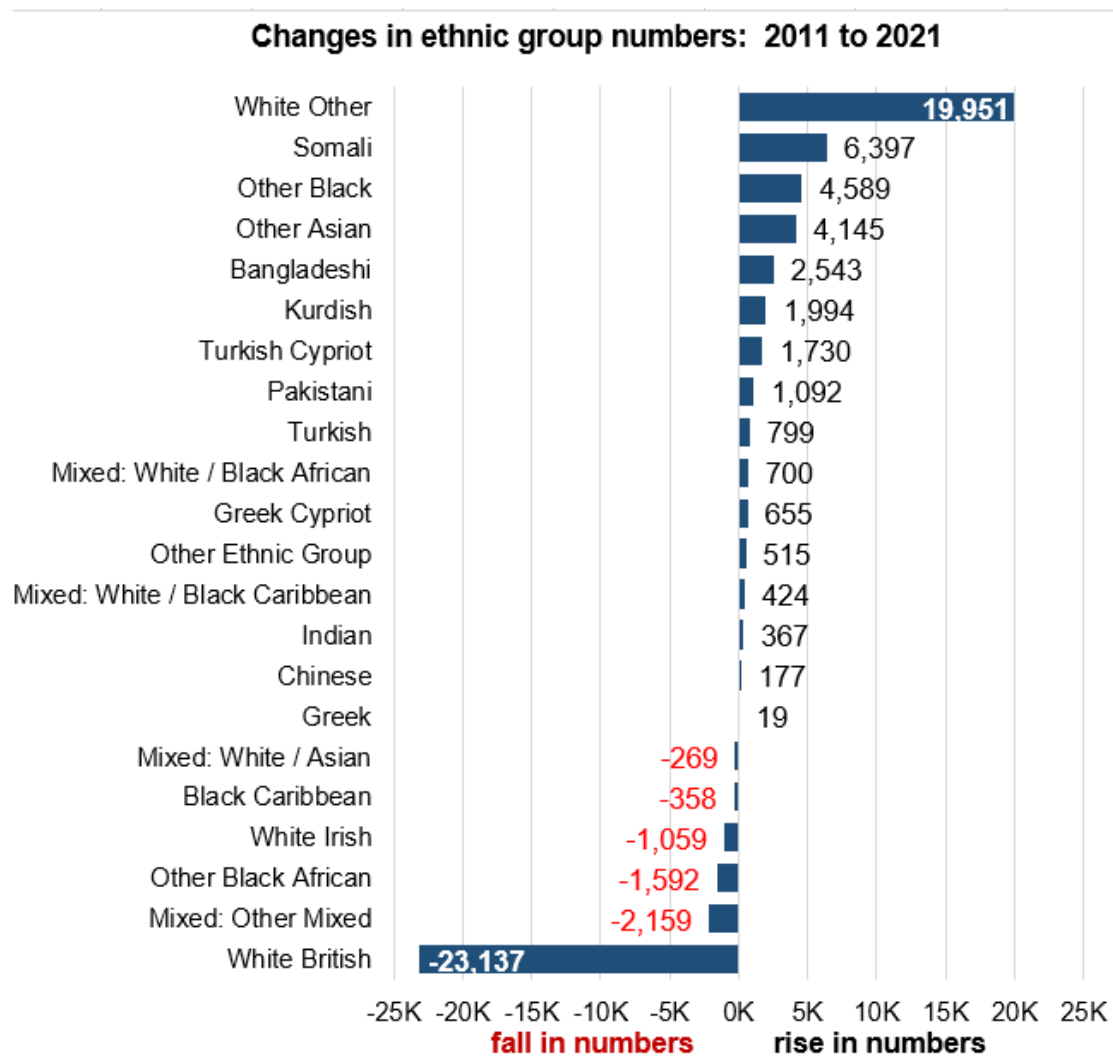
- Enfield is home to the largest numbers nationally of people belonging to these ethnic groups:
 - Greek and Greek Cypriot
 - Turkish and Turkish Cypriot
 - Kurdish
 - Albanian
 - Bulgarian
- Enfield also has the 5th highest Somali population
- 25% of all Turkish Cypriots in England and Wales live in Enfield, and 22% of all Greek Cypriots

Ethnicity: 34 categories	Persons (2021)	% of total
White British	103,313	31.3
White Irish	6,184	1.9
Gypsy or Irish Traveller	374	0.1
Greek	3,509	1.1
Greek Cypriot	9,912	3.0
Turkish	17,503	5.3
Turkish Cypriot	7,652	2.3
Kurdish	5,578	1.7
Bulgarian	5,386	1.6
Polish	5,002	1.5
Romanian	4,623	1.4
Albanian	3,324	1.0
Roma / Romany Gypsy	1,146	0.3
White Other	24,720	7.5
Mixed: White / Black Caribbean	5,276	1.6
Mixed: White / Black African	3,084	0.9
Mixed: White / Other Black (incl Black British)	204	0.1
Mixed: White / Asian	4,009	1.2
Mixed: Black / Asian	360	0.1
Mixed: Other	6,543	2.0
Indian	12,015	3.6
Pakistani	3,686	1.1
Bangladeshi	8,142	2.5
Chinese	2,765	0.8
Other Asian	11,641	3.5
Black British	6,015	1.8
Somali	8,089	2.5
Ghanaian	4,836	1.5
Nigerian	4,945	1.5
Other Black African	17,340	5.3
Black Caribbean	16,976	5.1
Other Black	2,784	0.8
Other Ethnic Group: Arab	2,796	0.8
Other Ethnic Group	10,257	3.1

2021 Census: Ethnic changes since 2011

This chart uses the 22-group classification employed in previous ethnicity estimates.

- 2011 to 2021 saw a fall in the White British population by over 23,000, or 18%
- Corresponding large rise in White Other population
- Very large increase in Somali ethnic group – (378%)
 - the numbers who identified as Somali in 2011 were very small (less than 1,700) –not clear why this was.
- Fall in Black Caribbean, White Irish, Black African and the Other Mixed group.

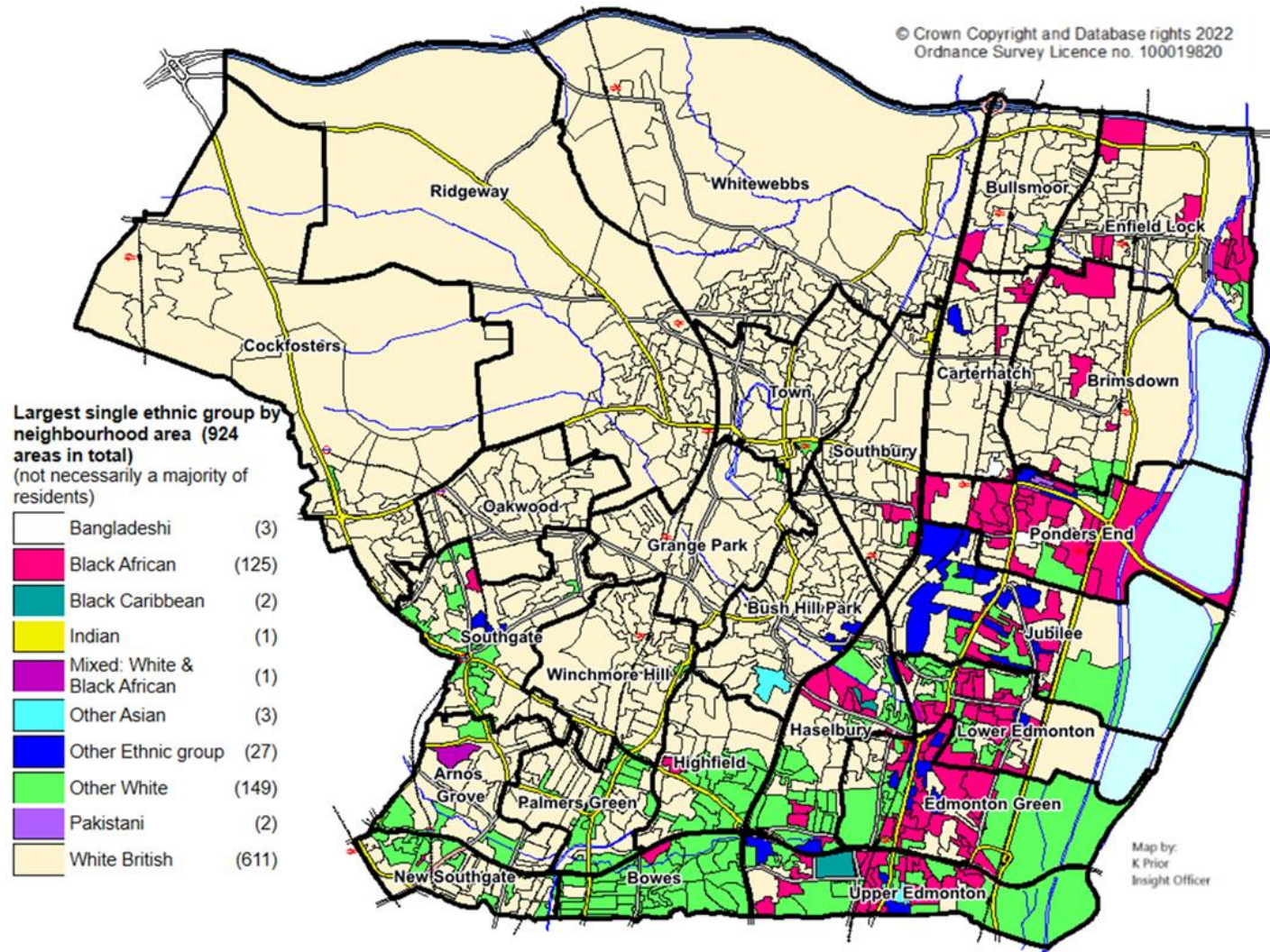


2021 Census: small-area ethnicity

- In most wards, no one group predominates: wards are essentially a collection of minorities (exceptions – Ridgeway, Whitewebbs, Grange Park).

The map shows which (broad) ethnic groups make up the greatest numbers in each small neighbourhood area.

The groups shown are NOT necessarily a majority – just the largest single group.



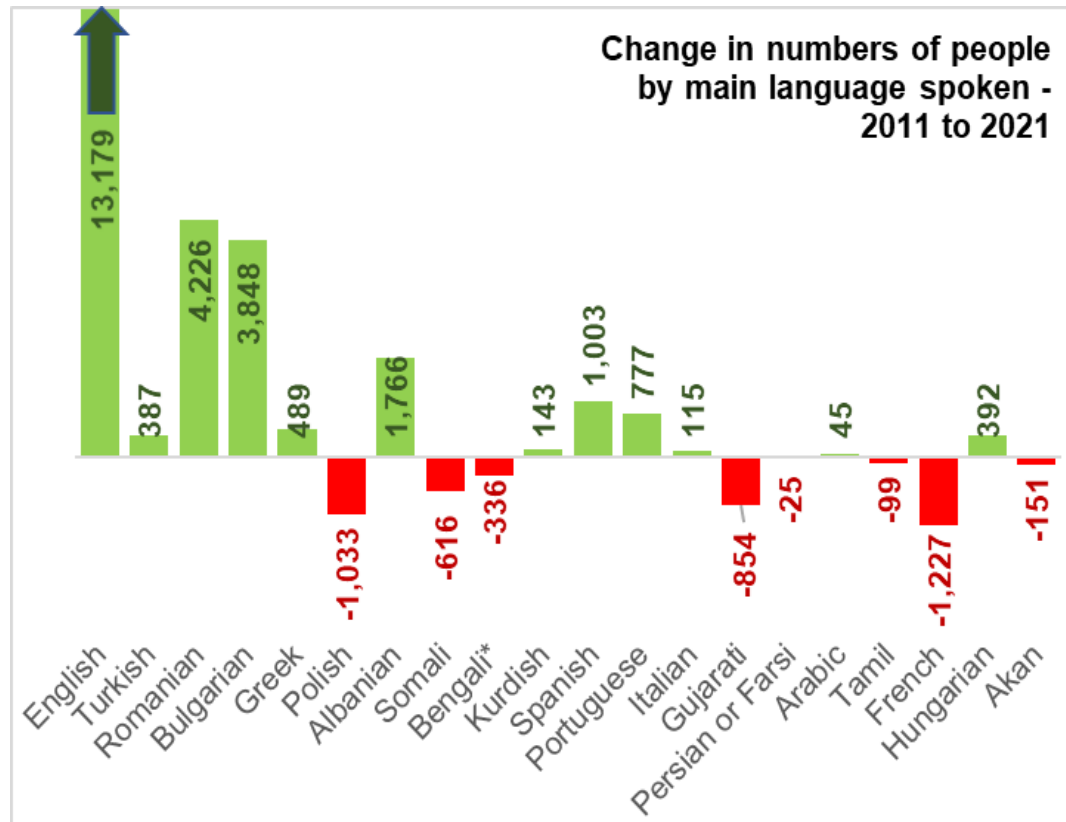
2021 Census: Language

Main language	People aged 3 and over	% of total
English	242,839	76.4
Turkish	18,765	5.9
Romanian	5,734	1.8
Bulgarian	5,569	1.8
Greek	5,116	1.6
Polish	4,804	1.5
Albanian	3,508	1.1
Somali	2,511	0.8
Bengali (with Sylheti and Chatgaya)	2,258	0.7
Kurdish	2,133	0.7
Spanish	2,108	0.7
Portuguese	2,056	0.6
Italian	1,914	0.6
Gujarati	1,636	0.5
Persian or Farsi	1,527	0.5
Arabic	1,242	0.4
Tamil	1,221	0.4
French	1,133	0.4
Hungarian	872	0.3
Akan	853	0.3
Other languages (74 others)	10,700	3.1

- 76% of people aged 3 and over speak English as their main or only language.
- Next most widely spoken are Turkish (5.7%), Romanian and Bulgarian (1.8% each).
- Nationally, Enfield contains the highest numbers of Turkish, Greek, Bulgarian and Albanian speakers (as their main or only language)
- 82% of Enfield households have at least one resident adult who speaks English as a main language
- 13% of households contain no members with English as a main language.

2021 Census: Language – change since 2011

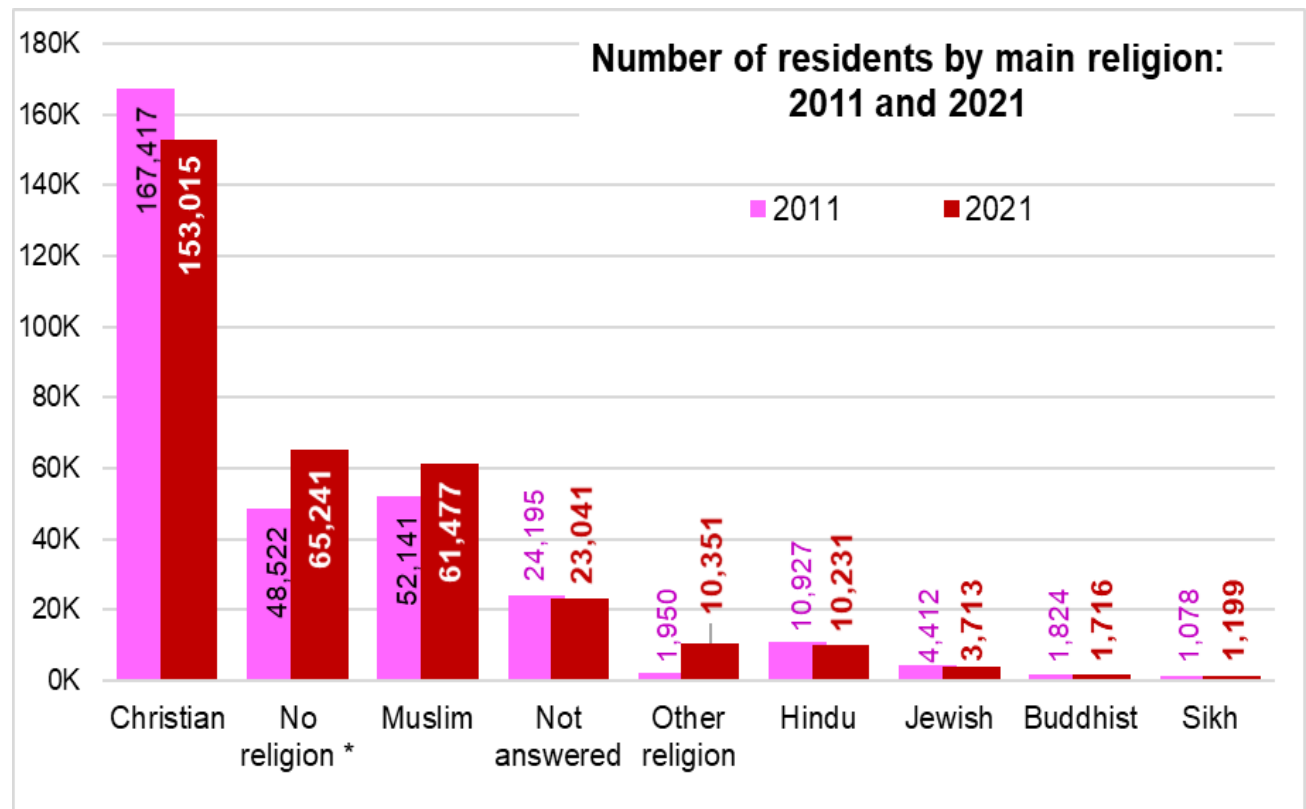
- Between 2011 and 2021, numbers of people with English as their main language rose by 13,179 (5.7%)
- Romanian and Bulgarian speakers rose by well over 200%, but from a very low base in 2011.
- Spanish and Portuguese speakers also increased by large percentages from low bases.
- The number of Somali speakers actually decreased by 20% in 2021, despite the large rise in people identifying with Somali ethnicity.



- There were over 1,000 fewer Polish speakers in 2021 than in 2011

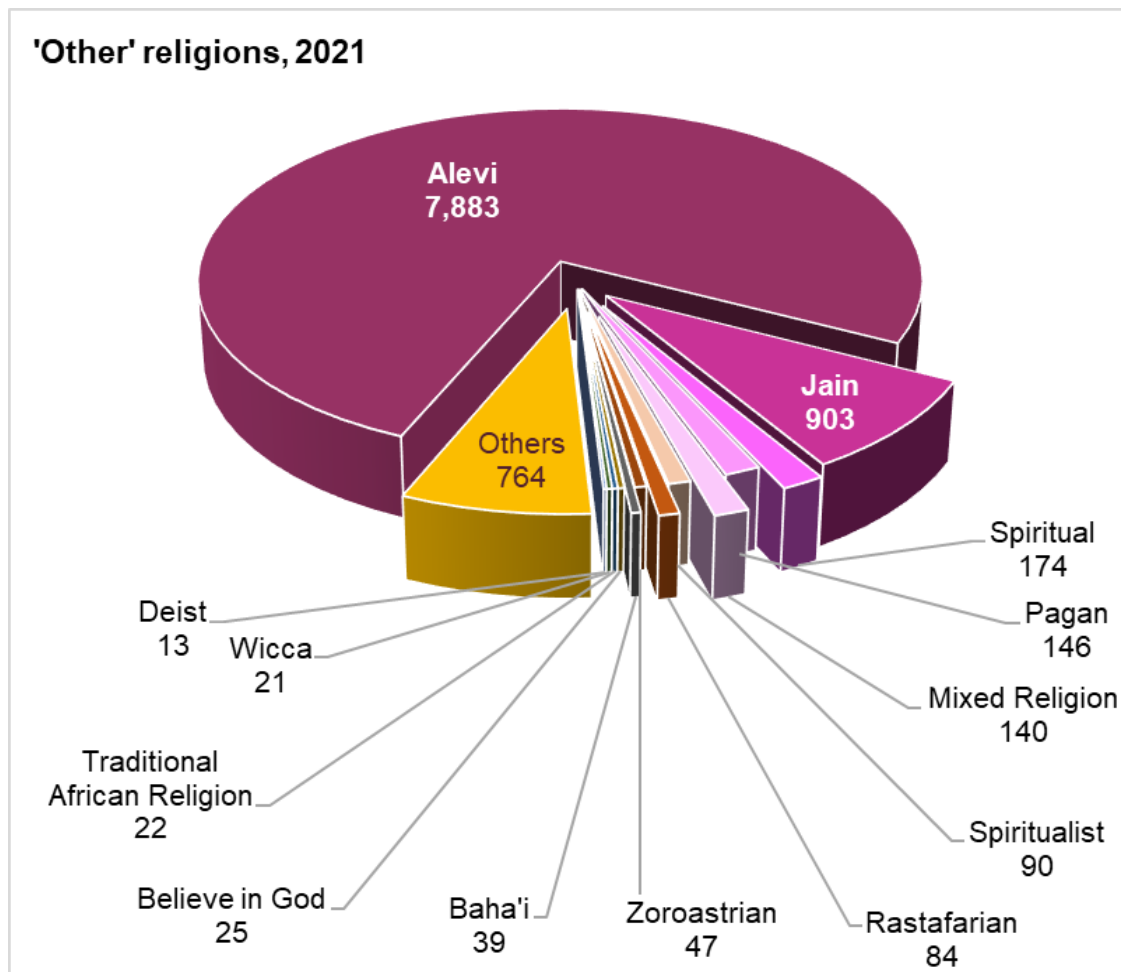
2021 Census: Religion

- Christians are still the largest religious group representing 167,417 (46% of the total) - 14,402 (8.6%) lower than in 2011.
- Number of Muslims rose by 18% to 61,477 (19% of the total)
- 20% (65,241) have 'No religion' - an increase of more than a third
- Enfield residents less likely to have 'No religion' than people in London or the country as a whole.
- Enfield also contains proportionately more Christians and Muslims than London or England & Wales.
- Fewer Hindu, Jewish and Buddhist residents than before.



2021 Census: Religion – Other Religion

- Fourfold increase among people of 'Other Religion' - from 1,950 in 2011 to 10,351 in 2021:
- This growth can be largely explained by the numbers of people who can now identify as Alevi.
- There are 7,883 Alevi in Enfield - the highest number of any local authority area in the country - over 30% of all England and Wales' Alevi are resident here.



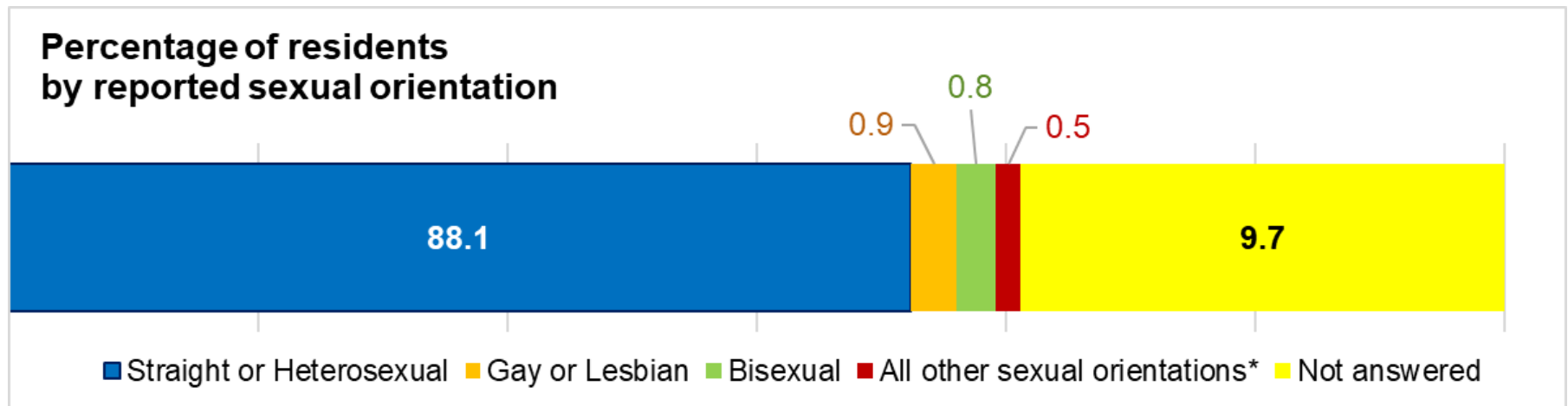
2021 Census: Sexual Orientation

Voluntary Questions on sexual orientation and gender identity included for the very first time in the 2021 Census (respondents aged 16+)

10% of respondents chose not to answer the sexual identity question.

- Just under 6,000 people gave their sexual orientation as something other than Straight / Heterosexual – breakdown in chart below.
- The proportions of people who declared themselves as gay, lesbian or bisexual was lower than the averages for London and England & Wales.

NB the axis scale has been changed to better show the small values

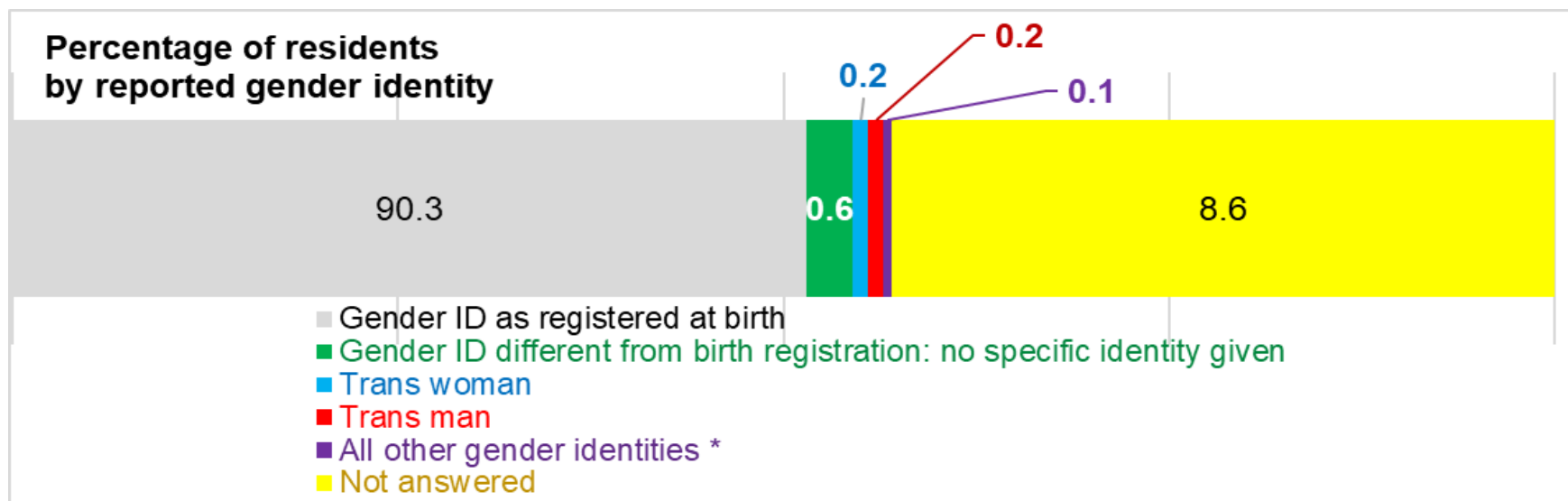


* All other sexual orientations includes: Pansexual, Asexual, Queer, plus all other sexual orientations

2021 Census: Gender Identity – Experimental statistics only (not official statistics)

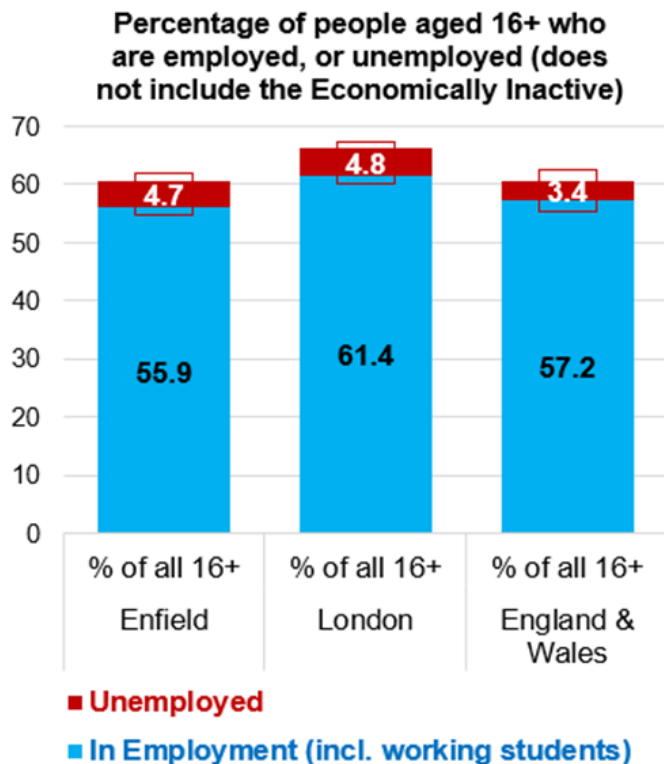
- 2,800 people declared a gender identity different from that which had been assigned at birth
- This is 1.1% of all respondents – higher than London (0.9%) and England and Wales (0.5%)
- The majority of these (1,650) stated a different gender identity from their birth registration, but gave no specific identity

NB the axis scale has been changed to better show the small values



* All Other gender identities includes non-binary

2021 Census: Economic Activity & Work



Unlike the Annual Population Survey, this deals with ALL Over 16s, not just the 16-64 year age bracket (this is important, because it affects the economic activity and employment rates, as it includes tens of thousands of retired Enfield residents).

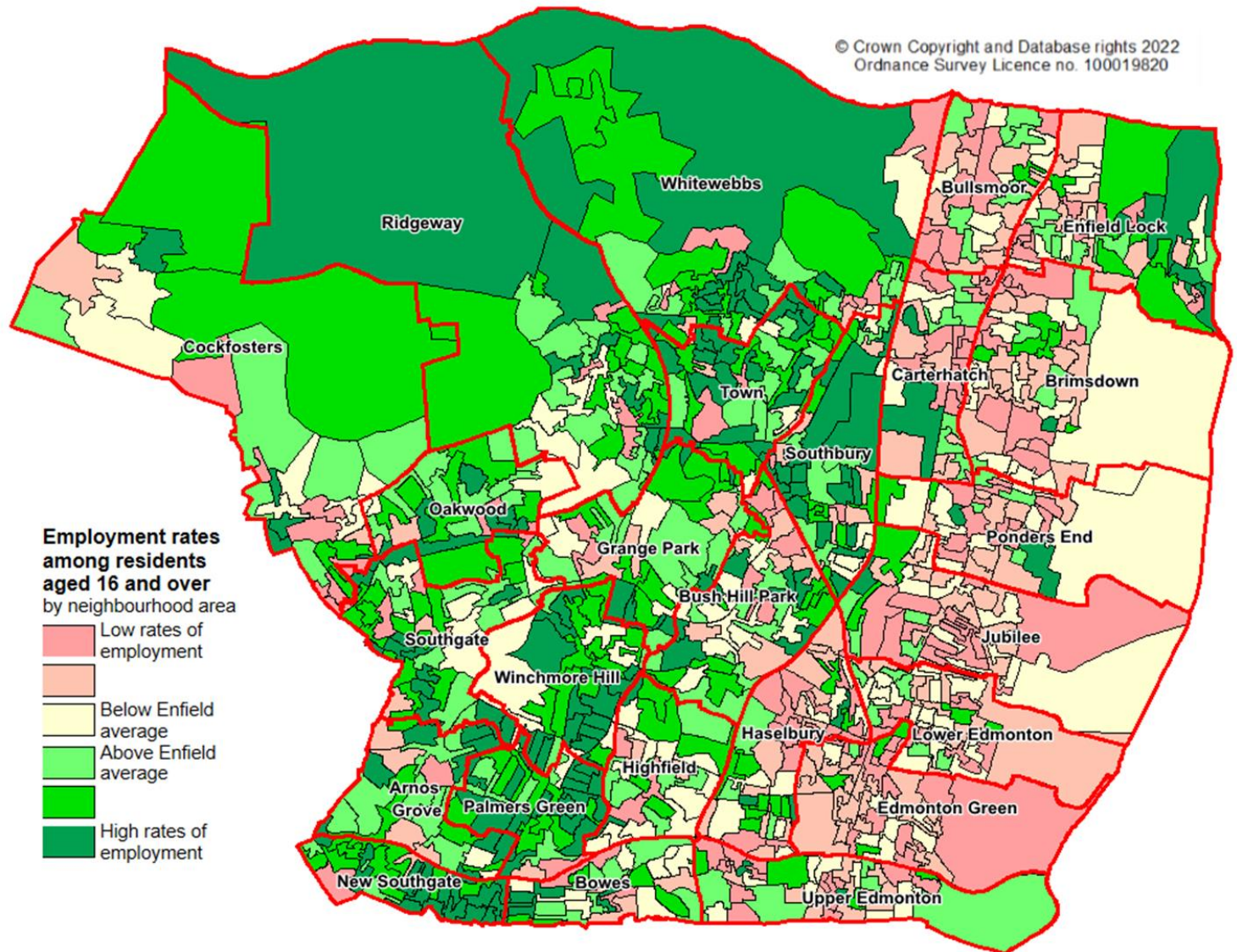
The Census measures the number of people aged 16 and over who are Economically Active - either working or unemployed (and ready to work).

- 60.7% of Enfield's Over 16s were economically active as at March 2021
- 55.9% were in employment (including full-time students who were also working)
- 4.7% were unemployed (NB the 0.1 difference in the total is due to the rounding of the figures)
- Both economic activity rates and employment rates were higher in London and the country as a whole

2021 Census: Employment rates

Employment rates vary widely within the borough:

from over 84%
in one area of
Cockfosters to
less than 19%
in one
neighbourhood
in Edmonton
Green
(see map)

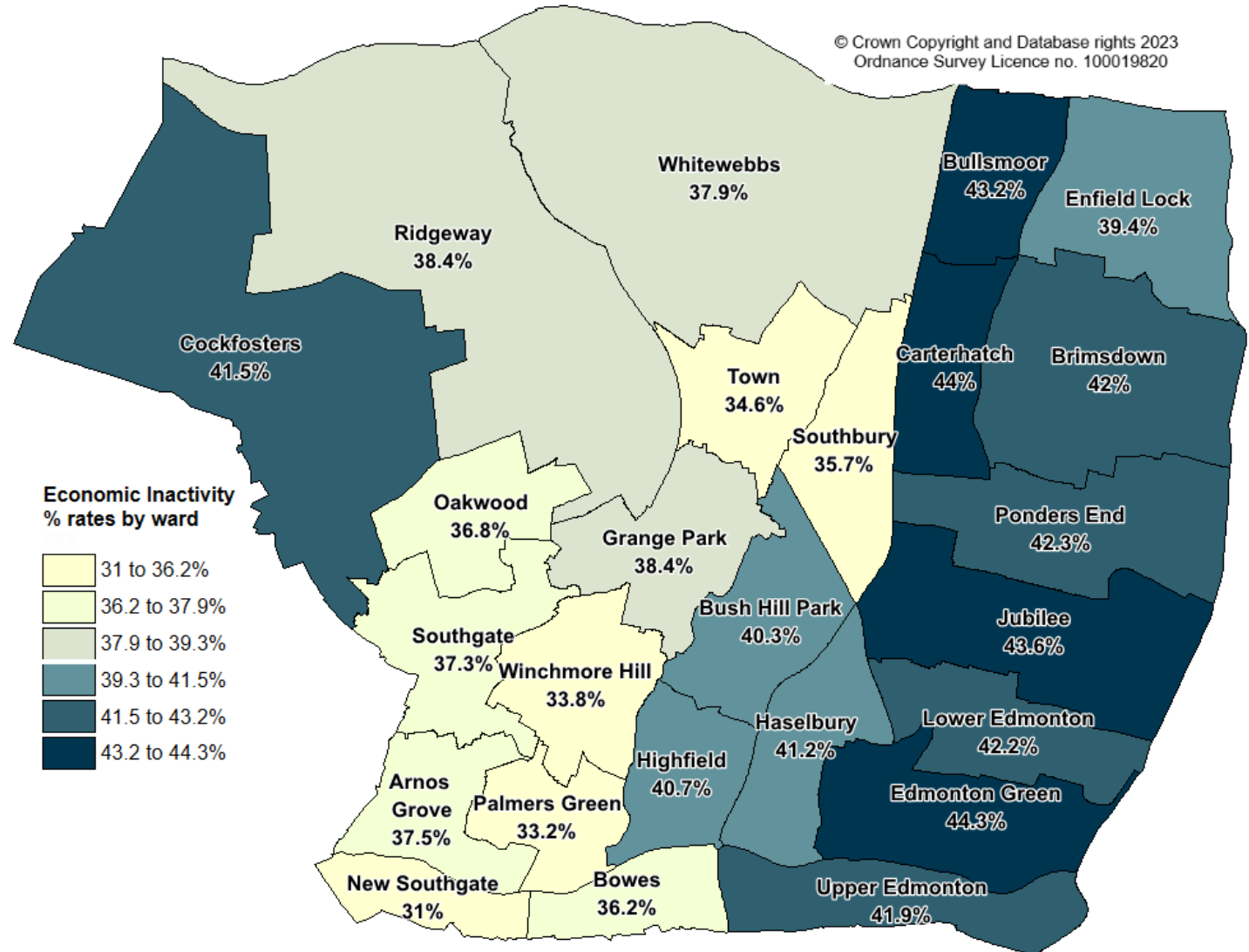


2021 Census: Economic Inactivity

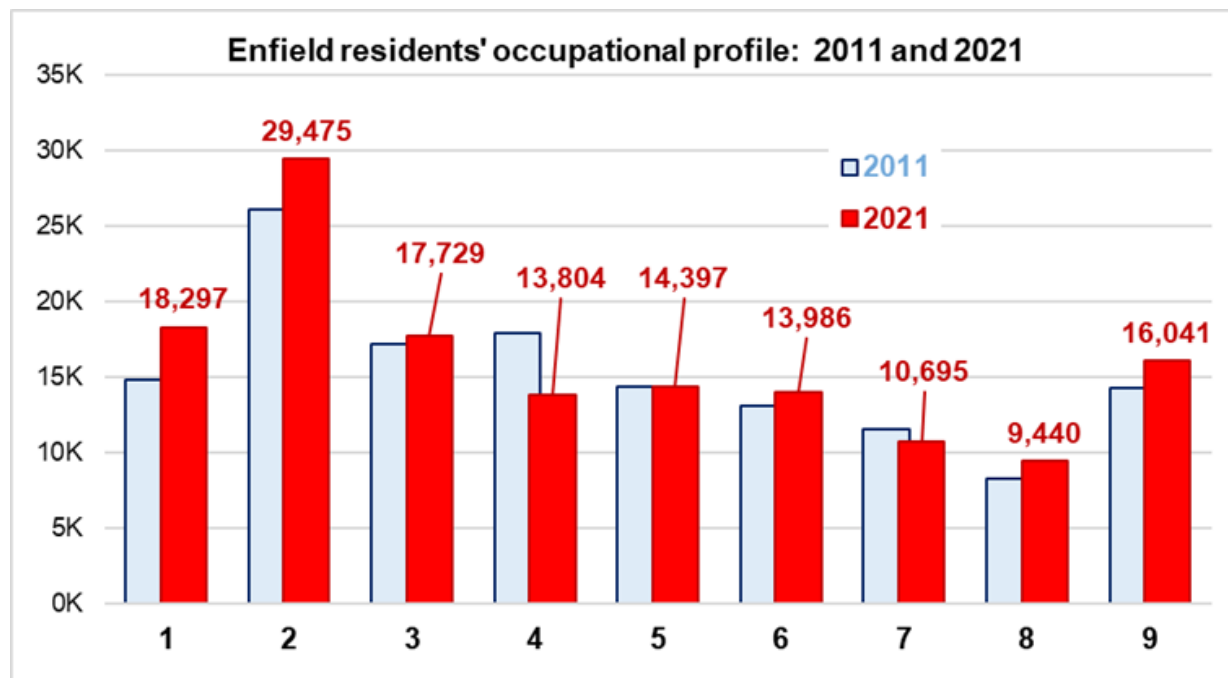
101,167 (39.3%) of Enfield's 16+ adults were economically inactive - a higher rate than in London (33.8%) but similar to that of England and Wales.

40% of Enfield's economically inactive are retired, more so in the central and western wards.

In the eastern wards – Edmonton Green, Carterhatch, Upper Edmonton and Enfield Lock, economically inactive people are more likely to be carers, suffering long-term illness, or students.



2021 Census: Occupational changes 2011-2021



1. Managers, directors and senior officials
2. Professional occupations
3. Associate professional and technical occupations
4. Administrative and secretarial occupations
5. Skilled trades occupations
6. Caring, leisure and other service occupations
7. Sales and customer service occupations
8. Process, plant and machine operatives
9. Elementary occupations

Higher numbers of people are now in:

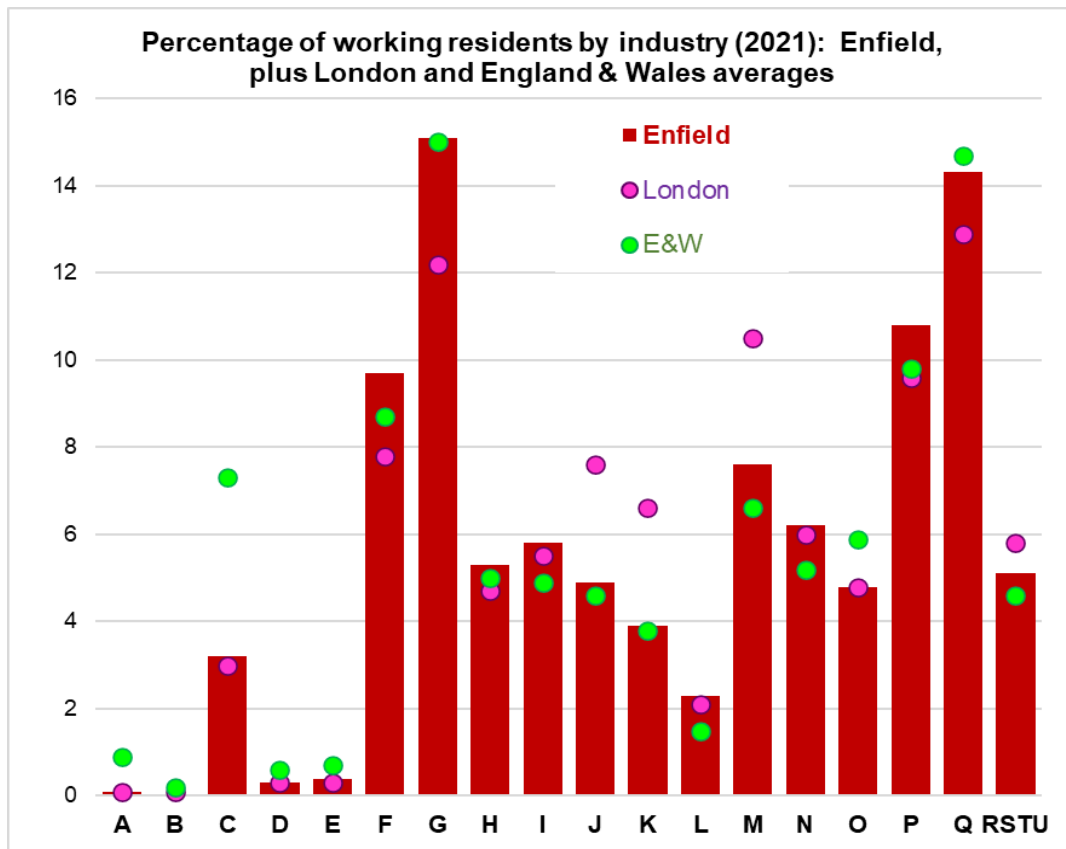
- ↑ Senior Management
- ↑ Professional occupations
- ↑ Caring, leisure and service roles,
- ↑ Process / machine operatives
- ↑ Elementary occupations

Lower numbers of people are now in:

- ↓ Administrative and secretarial occupations
- ↓ Sales and Customer service.

2021 Census: Industrial Sectors

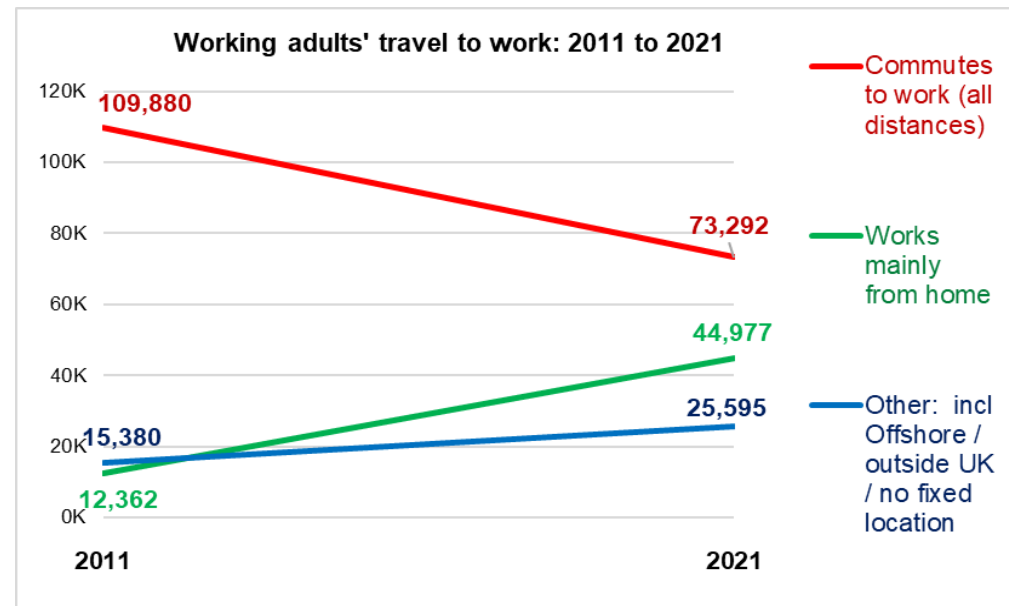
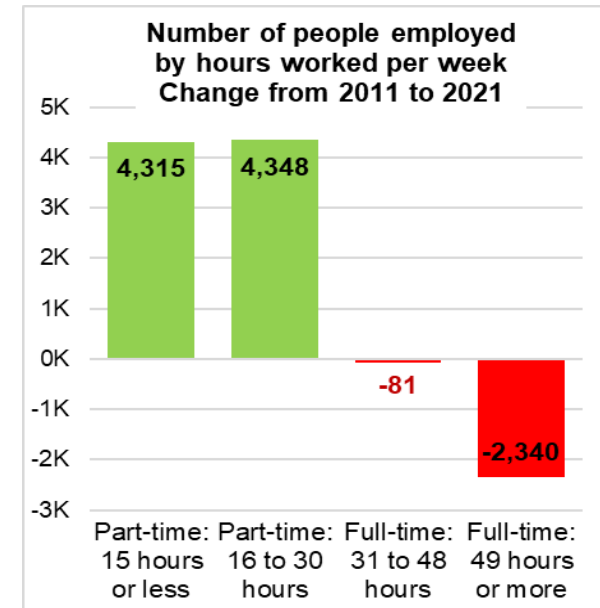
- Largest employment sectors for Enfield residents: Wholesale & Retail Trade (including vehicle repair), and Human Health and Social Care.
- Higher than average numbers work in Education and Construction (compared to national and regional proportions)
- In common with the rest of London, numbers of people working in manufacturing are relatively low.



A: Agriculture, Forestry and fishing
B: Mining and quarrying
C: Manufacturing
D: Electricity, gas, steam and air conditioning supply
E: Water supply, Sewerage, Waste & Remediation activities
F: Construction
G: Wholesale and retail trade; repair of motor vehicles and motorcycles
H: Transport and storage
I: Accommodation and food service activities
J: Information and communication
K: Financial and insurance activities
L: Real estate activities
M: Professional, scientific and technical activities
N: Administrative and support service activities
O: Public administration and defence; compulsory social security
P: Education
Q: Human health and social work activities
R, S, T, U: Arts, Entertainment, Recreation, Other services

2021 Census: Working hours & commuting

- 143,864 Enfield adults work:
 - 93,045 (64.7%) full-time
 - 50,819 (35.3%) part-time
- 6,000 more Enfield residents were working in 2021 than in 2011, but the number in full-time work fell by over 2,400
 - the net rise in employment is owing to an increase in part-time jobs.
- 31.3% of Enfield's employed residents (31.3%) now work from home most of the time - a rise of 264%
 - A further 18% work either in no fixed location or outside the UK - 60% more than in 2011.
- The numbers of people commuting to their workplace declined by over 36,500 (33%).

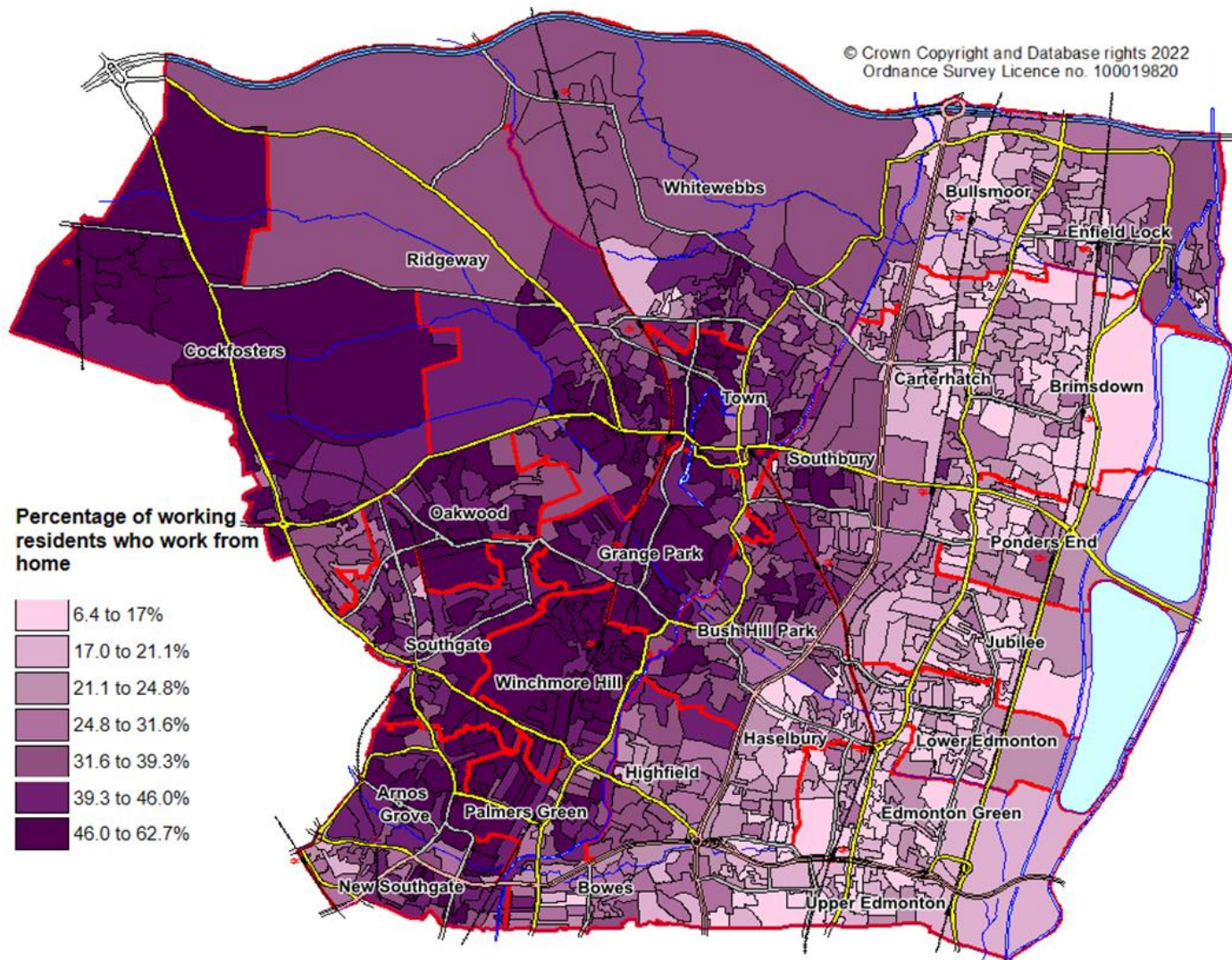


2021 Census: Working from home & commuting

Nearly half of working people in Winchmore Hill ward worked mostly from home as at March 2021. Similarly high proportions (over 40%) in other western wards. See map.

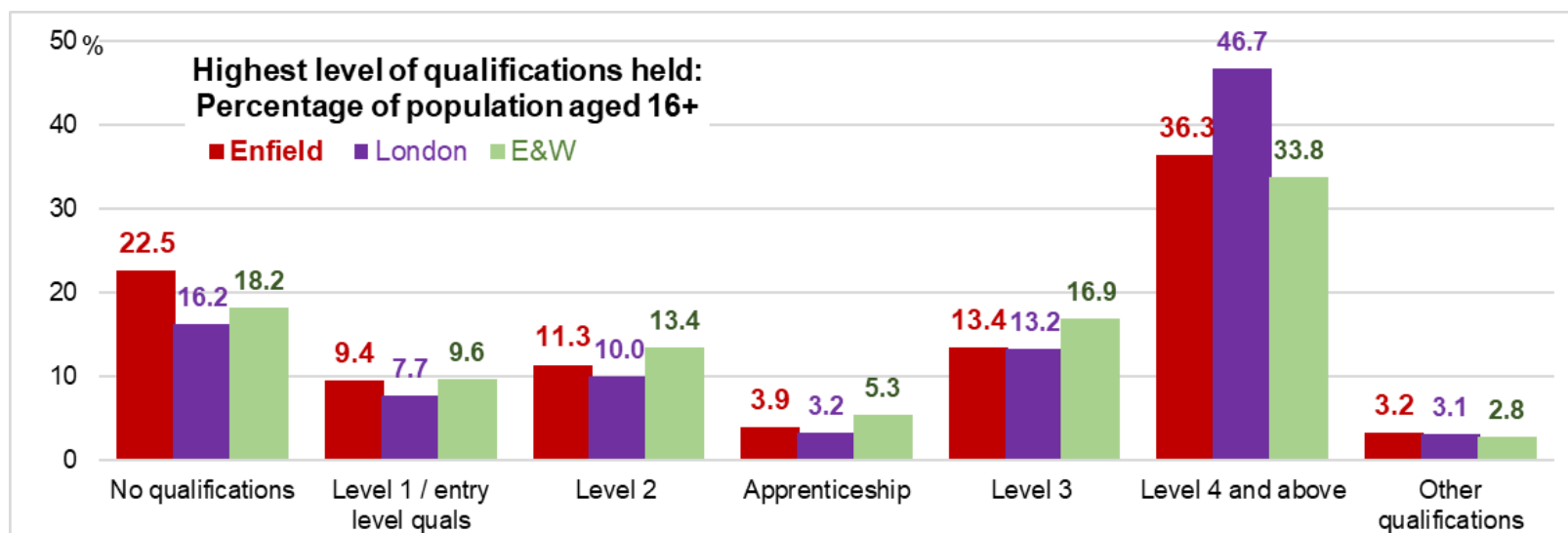
Despite the changes, the majority of people still travel to work:

- 32.5% of drive a car or van (2.2% travel as a passenger)
- 24.3% take public transport (train, tube or bus)
- 5.7% walk
- 1.4% cycle
- 2.6% use other methods, such as taxi or moped



2021 Census: Educational Qualifications

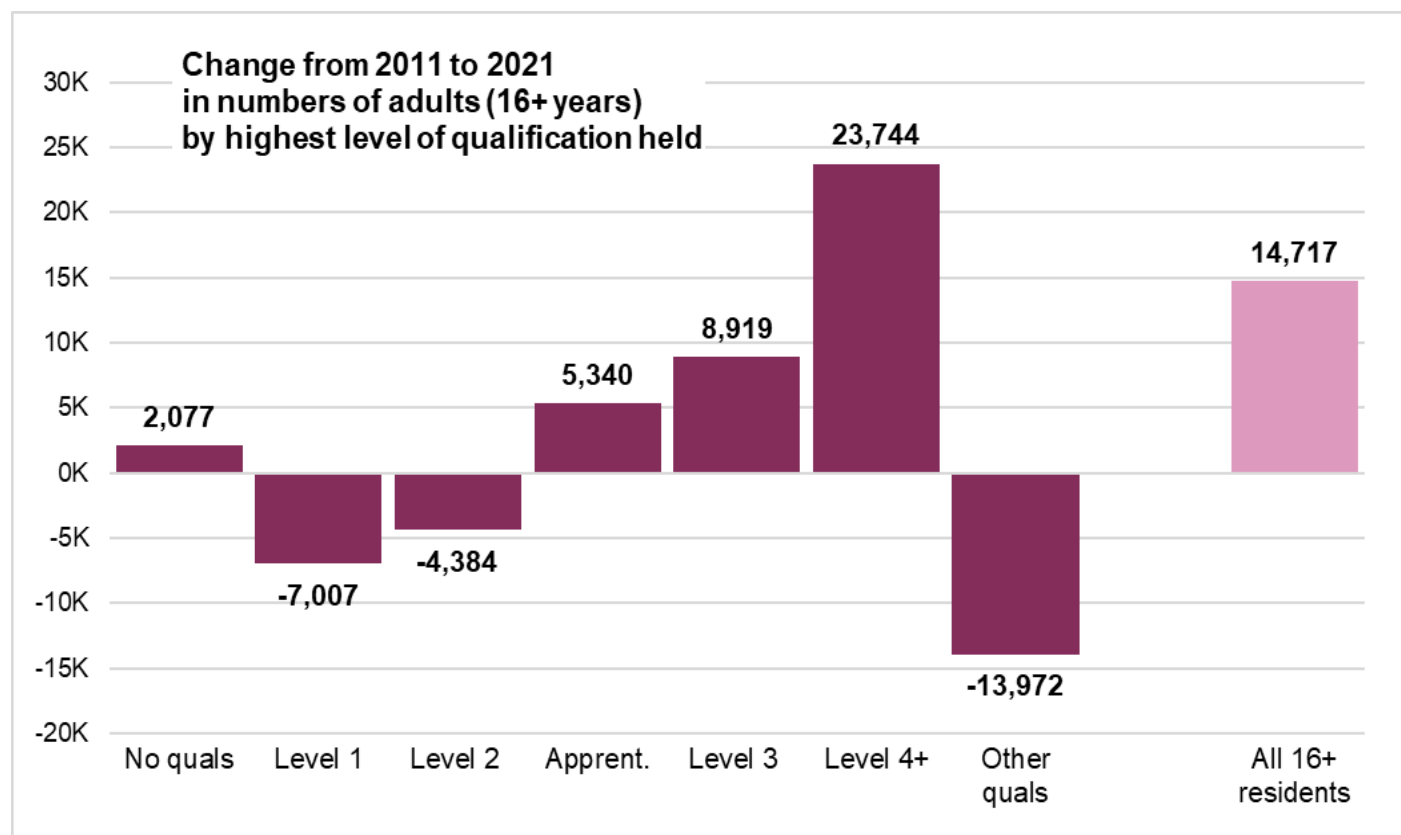
- 57,813 people (aged 16+) have no formal qualifications (22.5%) – higher rates than regional and national averages
- 36% have Level 4 qualifications (HND or degree level) or above – better than national average



Level 1 and entry level qualifications:	1 to 4 GCSEs grade A* to C , Any GCSEs at other grades, O levels or CSEs (any grades), 1 AS level, NVQ level 1, Foundation GNVQ, Basic or Essential Skills
Level 2 qualifications:	5 or more GCSEs (A* to C or 9 to 4), O levels (passes), CSEs (grade 1), School Certification, 1 A level, 2 to 3 AS levels, VCEs, Intermediate or Higher Diploma, Welsh Baccalaureate Intermediate Diploma, NVQ level 2, Intermediate GNVQ, City and Guilds Craft, BTEC First or General Diploma, RSA Diploma
Level 3 qualifications:	2 or more A levels or VCEs, 4 or more AS levels, Higher School Certificate, Progression or Advanced Diploma, Welsh Baccalaureate Advance Diploma, NVQ level 3; Advanced GNVQ, City and Guilds Advanced Craft, ONC, OND, BTEC National, RSA Advanced Diploma
Level 4 qualifications and above:	Degree (BA, BSc), higher degree (MA, PhD, PGCE), NVQ level 4 to 5, HNC, HND, RSA Higher Diploma, BTEC Higher level, professional qualifications (for example, teaching, nursing, accountancy)
Other qualifications:	Vocational or work-related qualifications, other qualifications achieved in England or Wales, qualifications achieved outside England or Wales (equivalent not stated or unknown)

2021 Census: Education – change from 2011 to 2021

- Nearly 24,000 more adults had Level 4+ education in 2021 than in 2011.
- 9,000 more people with 2 A levels or equivalent
- Number with an apprenticeship more than doubled from 4,715 to 10,055

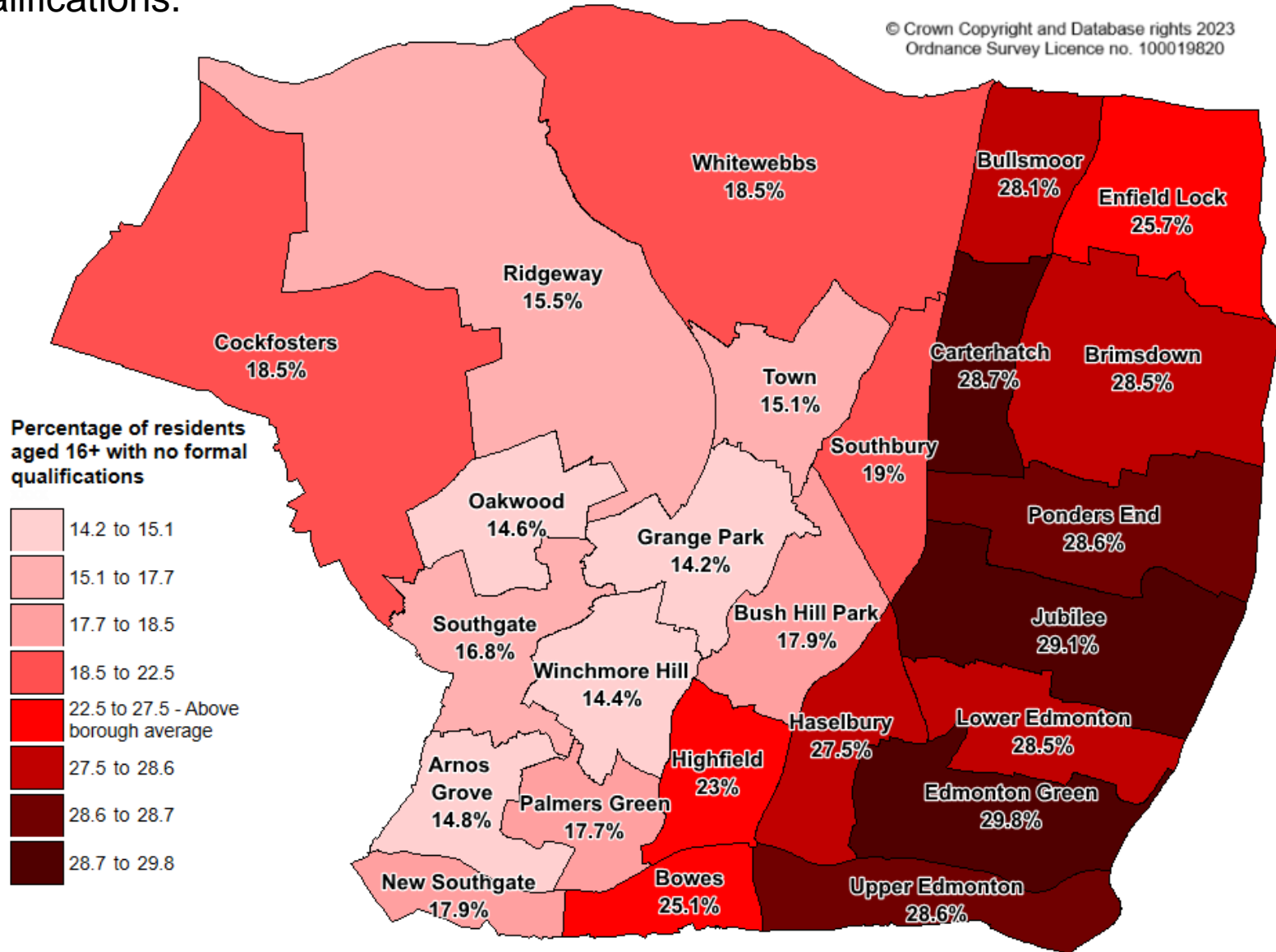


2021 Census: No qualifications at ward level

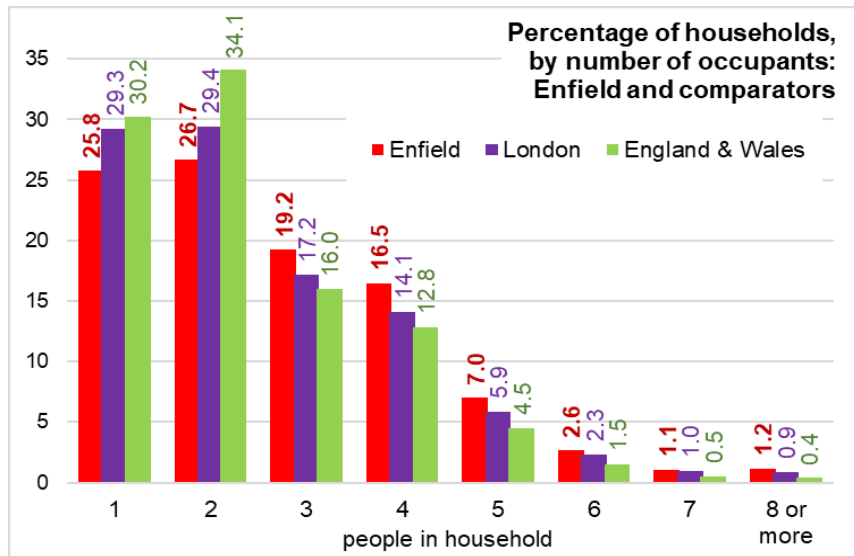
In Edmonton Green, Jubilee and Carterhatch, high numbers of adults (nearly 30%) have no qualifications.

Map shows percentages of adults with no qualifications by ward

In Arnos Grove and Winchmore Hill, over half of adults have Level 4 qualifications and above.



2021 Census: Households and families

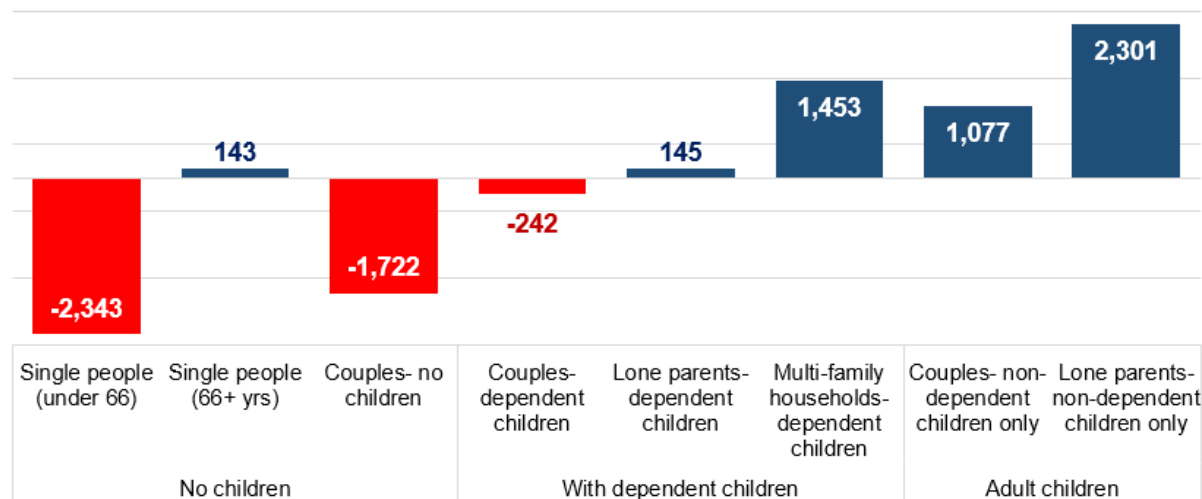


Officially, Enfield had 120,925 households as at the Census day 2021.

Households are getting larger: Average household size - 2.7 persons (2.6 in 2011)

14,333 households (12% of the total) have five or more members, and just over 1% of Enfield's households have eight or more members – higher than national and regional averages.

Changes in household composition: 2011 to 2021



Fewer:

- Single-person households aged under 65
- Couples with no children
- Couples with children

More:

- Parents with non-dependent children
- Multi-family households

2021 Census: Housing – headline stats

- Home ownership falling - 52% of households are owner-occupiers (58% in 2011)
- Private Renters grew by over a third - now 29% of all households (22% in 2011)
- Social Renting households fell slightly to 18% (17% in 2011)
- 61% of Enfield's households live in a house, while 39% are in flats (including house conversions)
- 72% of households have gas central heating - 6% lower than in 2011
- 13% have electric-only heating – 9% more than in 2011
- Fewer than 500 households have some form of renewable energy heating system (including those with two or more types of heating)
- 2% have no central heating system (down from 3% in 2011)
- 13% of households are overcrowded - the London average is 11%
 - In Upper Edmonton, overcrowding rates are 23.5%
- Car ownership increased from 2011 to 2021 - 2,400 more households now own at least one car or van. The numbers with multiple cars also rose.
 - At least 1650 more cars at the disposal of Enfield households than in 2011.

2021 Census: Housing tenure 2011 and 2021

Tenure	2011		2021		Change: 2011 to 2021	
	number	%	Number	%	Number	%
Owned	69462	57.9	63347	52.4	-6115	↓ -8.8
Owned outright	31452	26.2	31740	26.2	288	↑ 0.9
Owned with mortgage	38010	31.7	31607	26.1	-6403	↓ -16.8
Shared ownership	1087	0.9	1319	1.1	232	↑ 21.3
Social rented	21073	17.6	20573	17	-500	↓ -2.4
Rented from Council	13666	11.4	12530	10.4	-1136	↓ -8.3
Rented from Other / HA / PRP	7407	6.2	8043	6.7	636	↑ 8.6
Private rented	26591	22.2	35388	29.3	8797	↑ 33.1
Private landlord or letting agency	25395	21.2	32773	27.1	7378	↑ 29.1
Other Private Rented	1196	1	2615	2.2	1419	↑ 118.6
Living rent free	1703	1.4	296	0.2	-1407	↓ -82.6
All households	119916	100	120923	100	1007	0.8

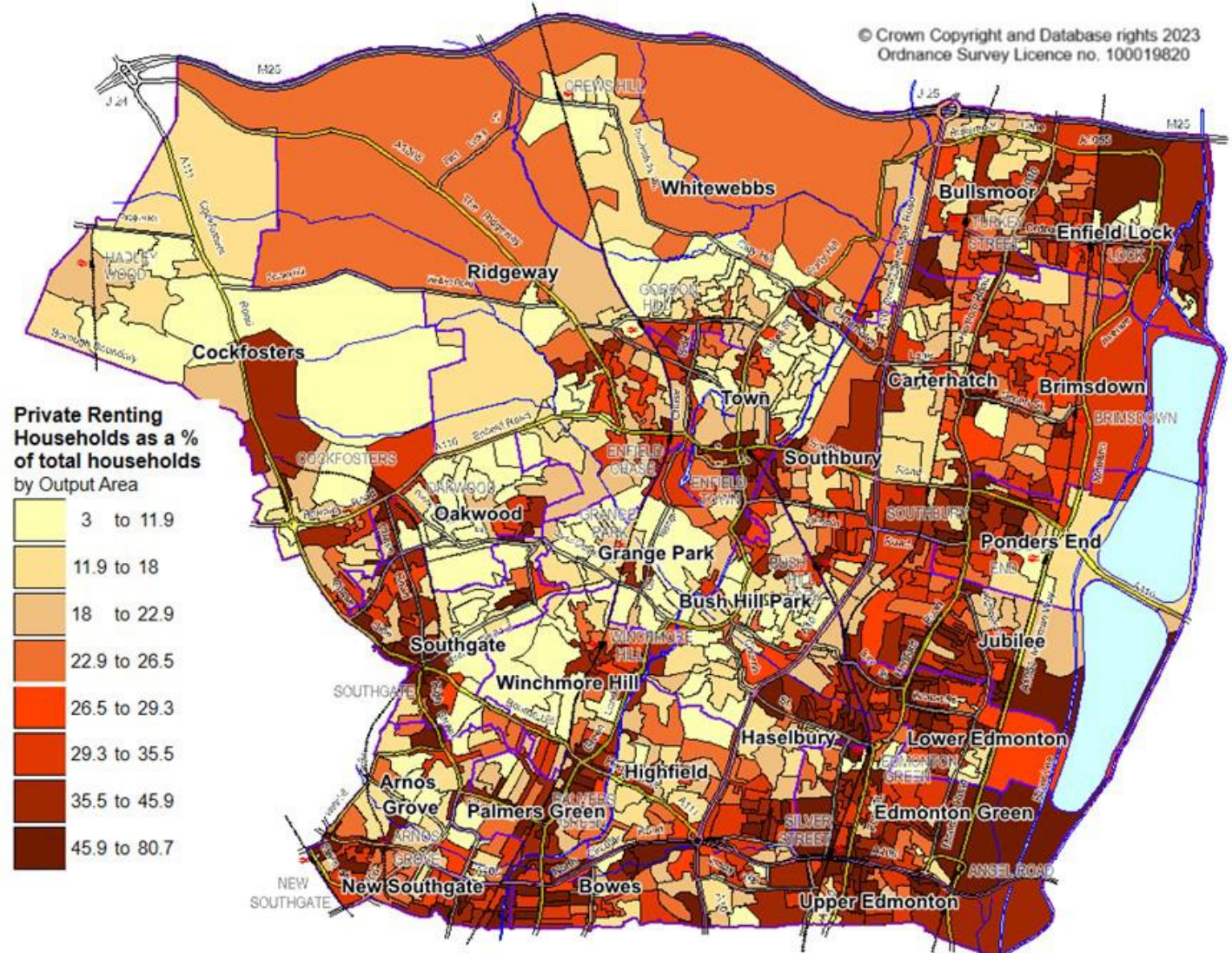
Owner-occupation rates –

Highest in Bush Hill Park, Grange Park, Arnos Grove (all over 70%)

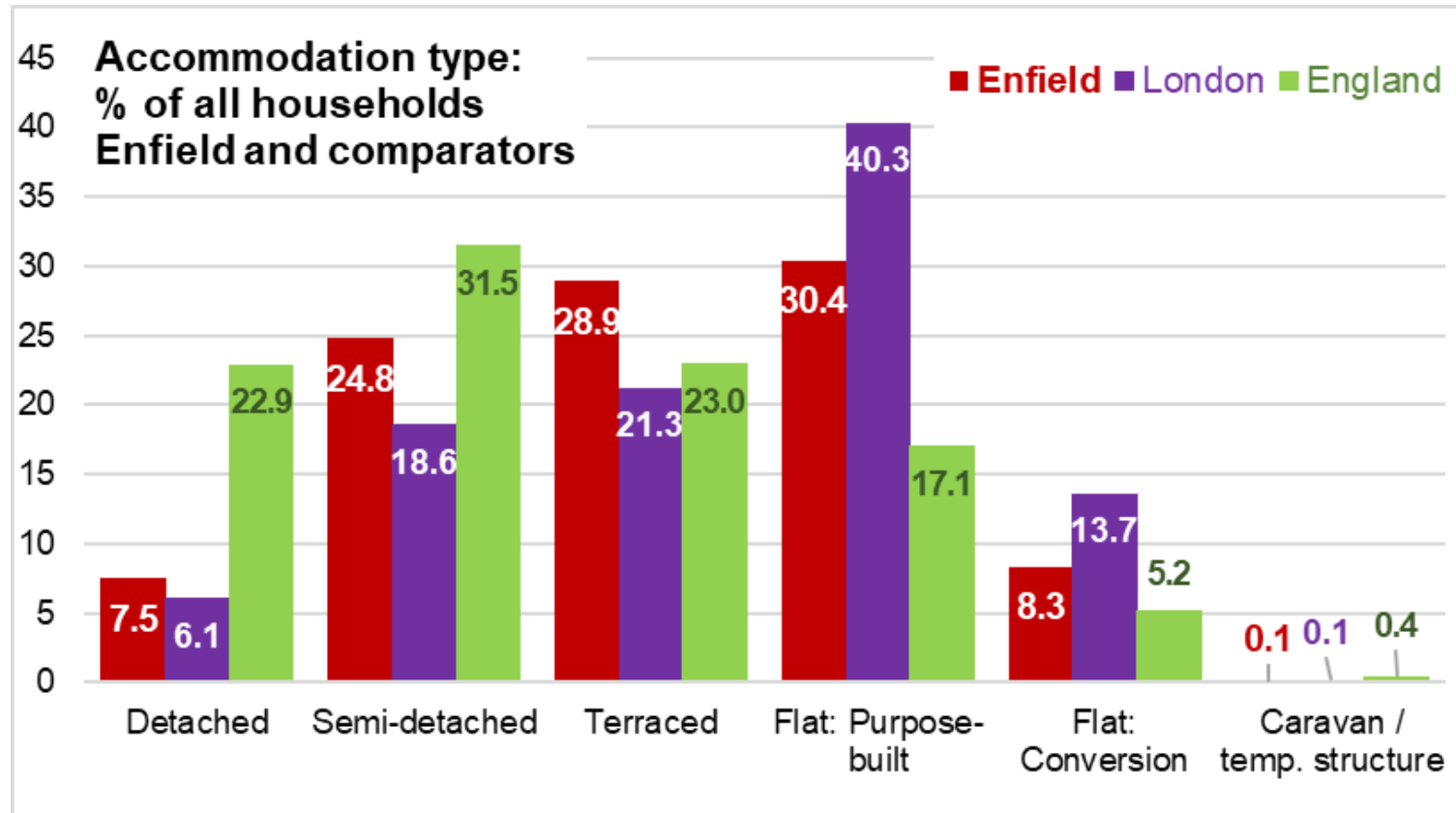
Lowest in Edmonton Green (26%), Upper Edmonton (34%) and Lower Edmonton (36%).

2021 Census: Housing tenure: Private renting

- Number of Private renting households rose by nearly 9,000 in the ten years to 2021, with a decline in all other tenure types.
- Highest proportions of Private Renters are in the wards of Palmers Green, New Southgate and Bowes.
- Map shows renting hotspots by neighbourhood area (Output Areas)



2021 Census: Dwelling types



26% of households in Cockfosters have a detached house

53% of Arnos Grove households live in a semi-detached.

Over half of Edmonton Green's homes are purpose built flats,

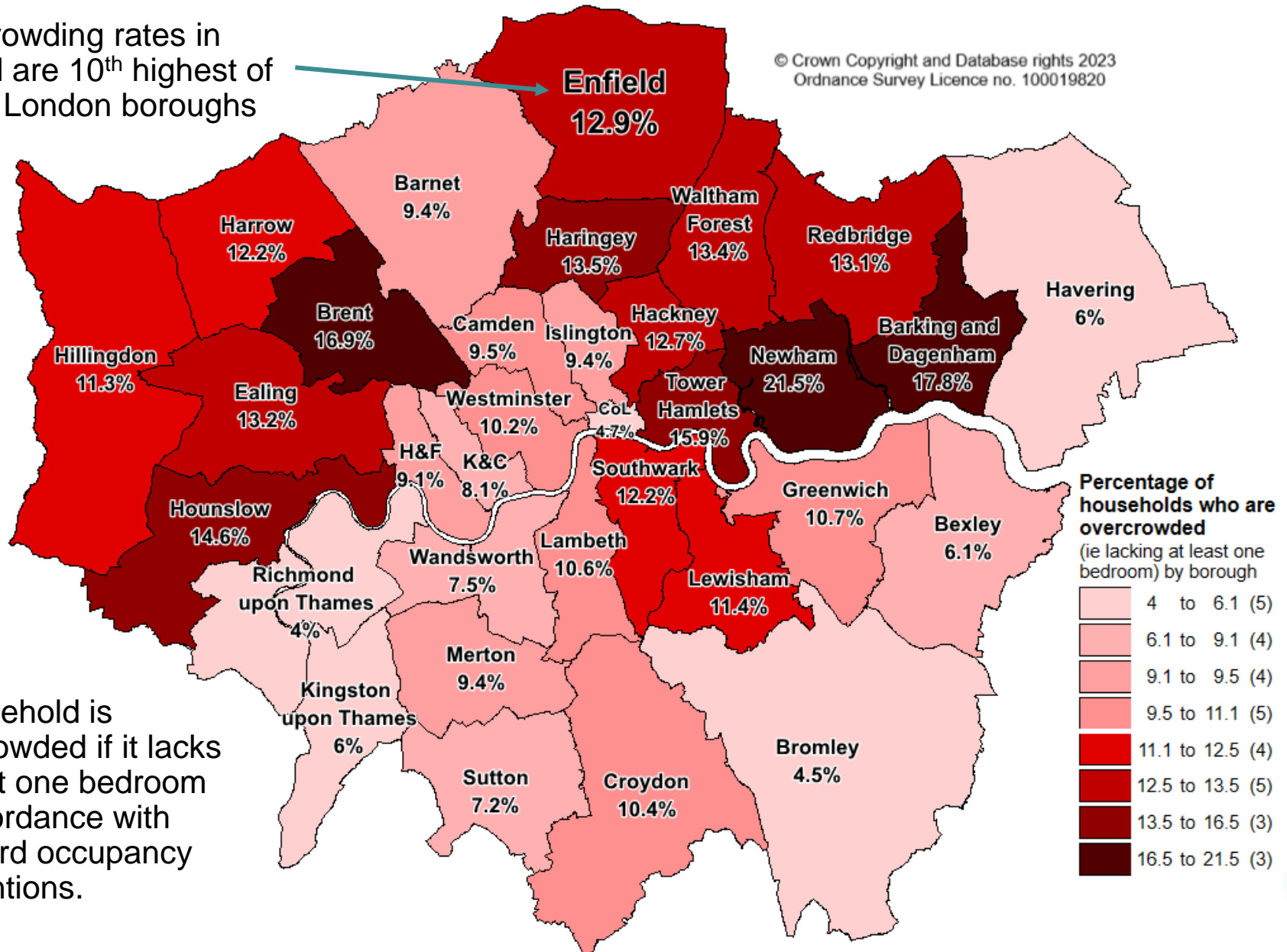
One third of Palmers Green households live in flats converted from other buildings, such as houses or commercial buildings, or above shops.

2021 Census: Overcrowding

11.1% of London's households are overcrowded

Overcrowding rates in Enfield are 10th highest of the 33 London boroughs

© Crown Copyright and Database rights 2023
Ordnance Survey Licence no. 100019820



A household is overcrowded if it lacks at least one bedroom in accordance with standard occupancy conventions.

2021 Census: Overcrowding (local level)

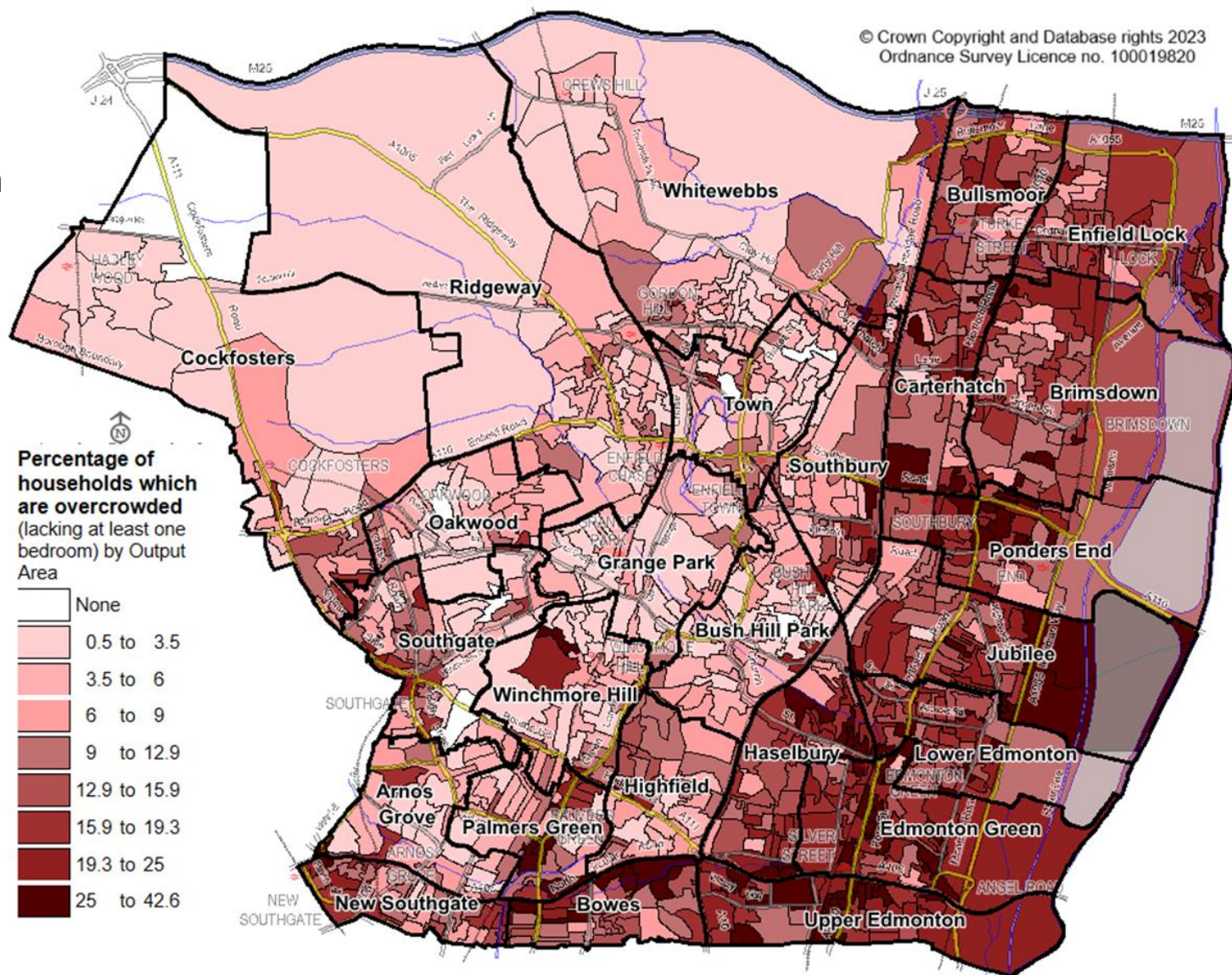
Overcrowding rates for wards:

Upper Edmonton - 23.5%,

Edmonton Green 21.4%

Ponders End - 21.0%.

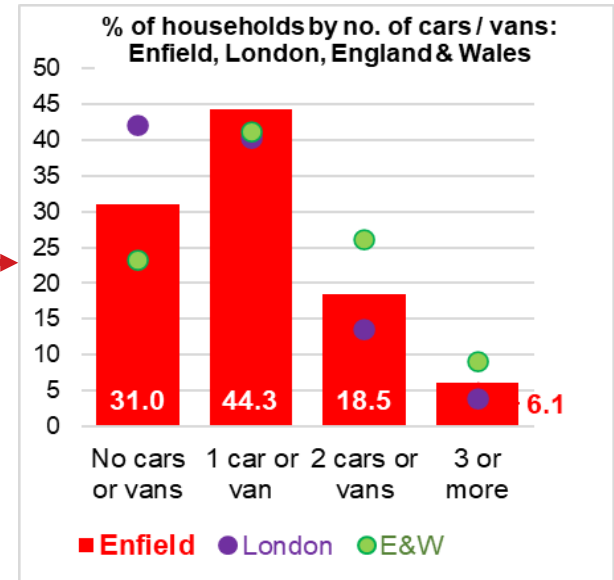
At neighbourhood area level, the highest rates of overcrowding are closely correlated with areas of known high deprivation.



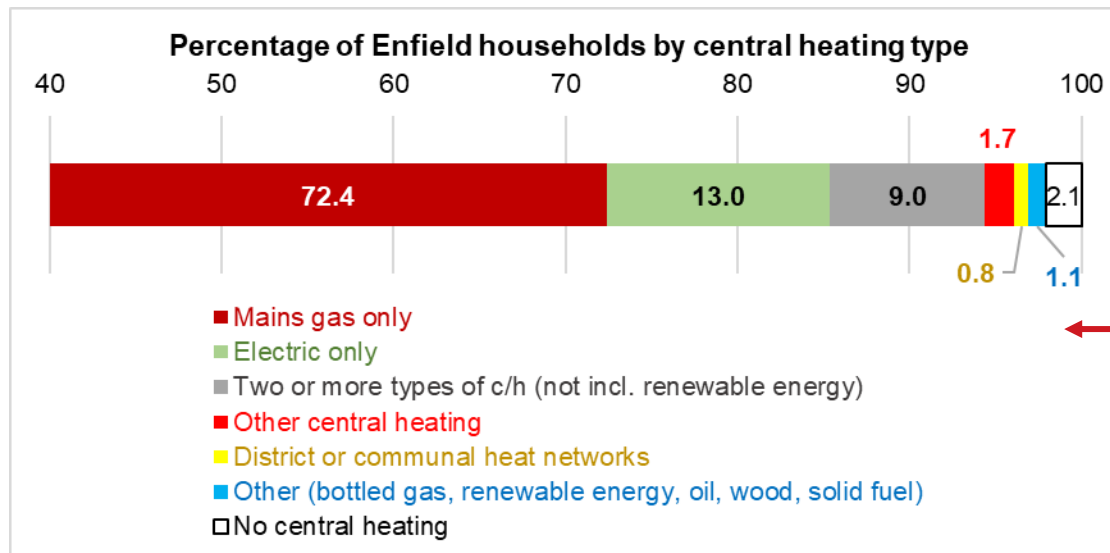
2021 Census: Car ownership & Central heating

83,407 households in Enfield (69% of the total) have at least one car or van at its disposal – 2,424 more households than in 2011.

18.5% have 2 cars, and 6% have three or more.



Central heating types



87,518 (72%) of Enfield households have mains gas central heating - 5,500 fewer than in 2011.

Households with hybrid heating (2 or more types) has doubled.

Communal heat networks make up less than 1% of heating types. The number of households **without** central heating fell from 3,562 in 2011 to 2,543 in 2021.

2021 Census: General Health

The health of Enfield residents is improving overall, but lags behind the rest of London

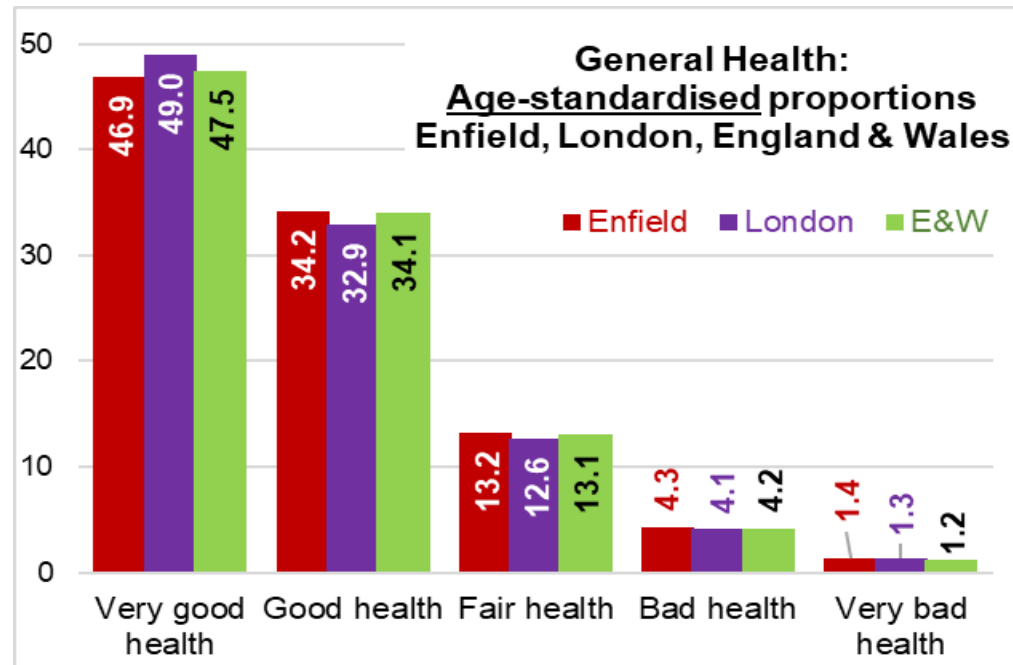
- 50.6% of Enfield residents (167,119 people) claimed Very Good health in 2021 – 21,000 more than in 2011.
- 83.6% (276,037) described their health as Good or Very Good in 2021
- 4.9% (16,125) were in Bad or Very Bad health in 2021– 5% fewer than in 2011.
- Compared with London as a whole:
 - Very good or Good health – lowest rate of the 33 boroughs
 - Bad or Very Bad health - fifth highest rate

Age-standardised

proportions:

(adjusted for age of population)

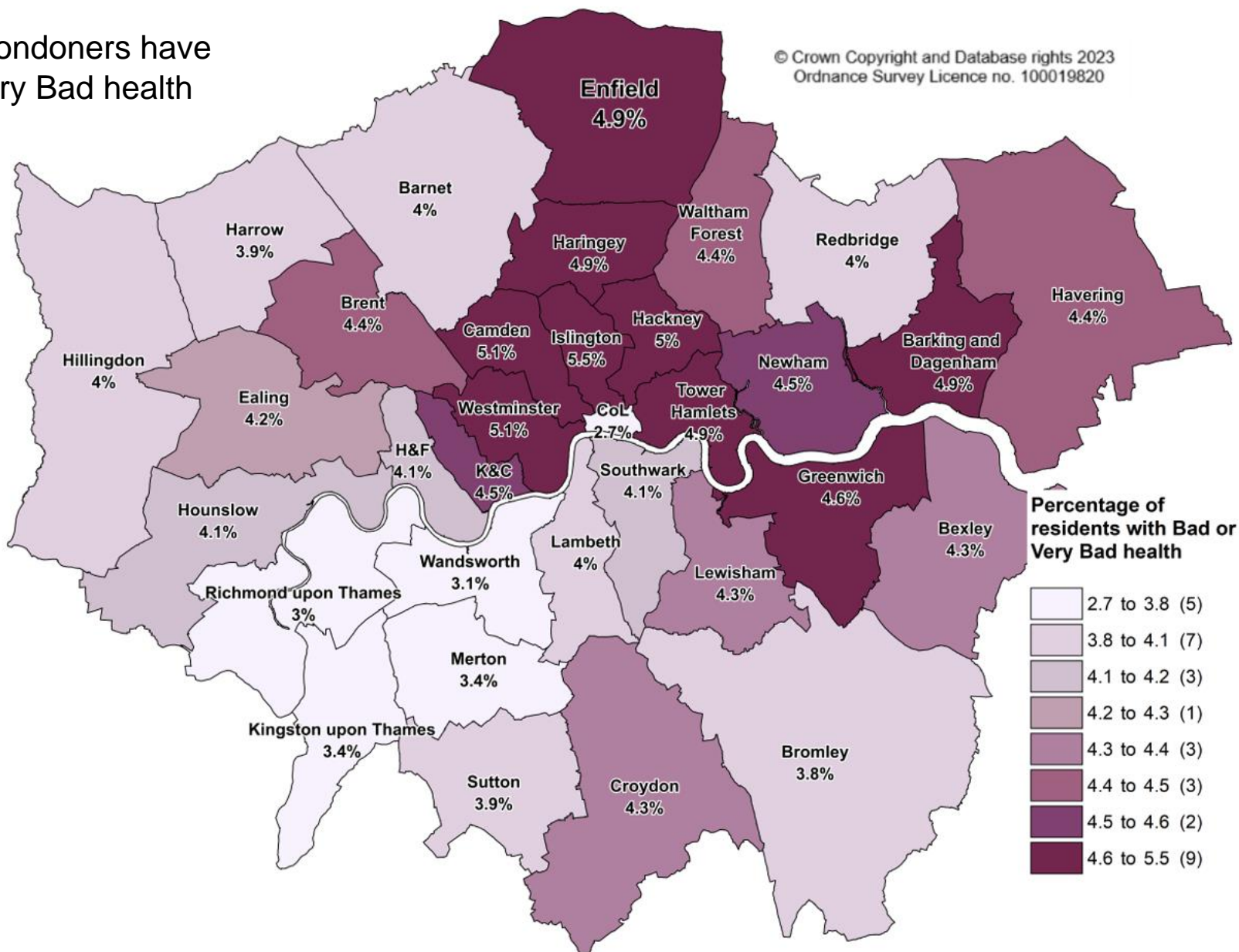
Enfield has lower proportions of people in Very good health and more in Bad or Very Bad health than the regional and national comparators.



2021 Census: Bad or Very Bad health in London

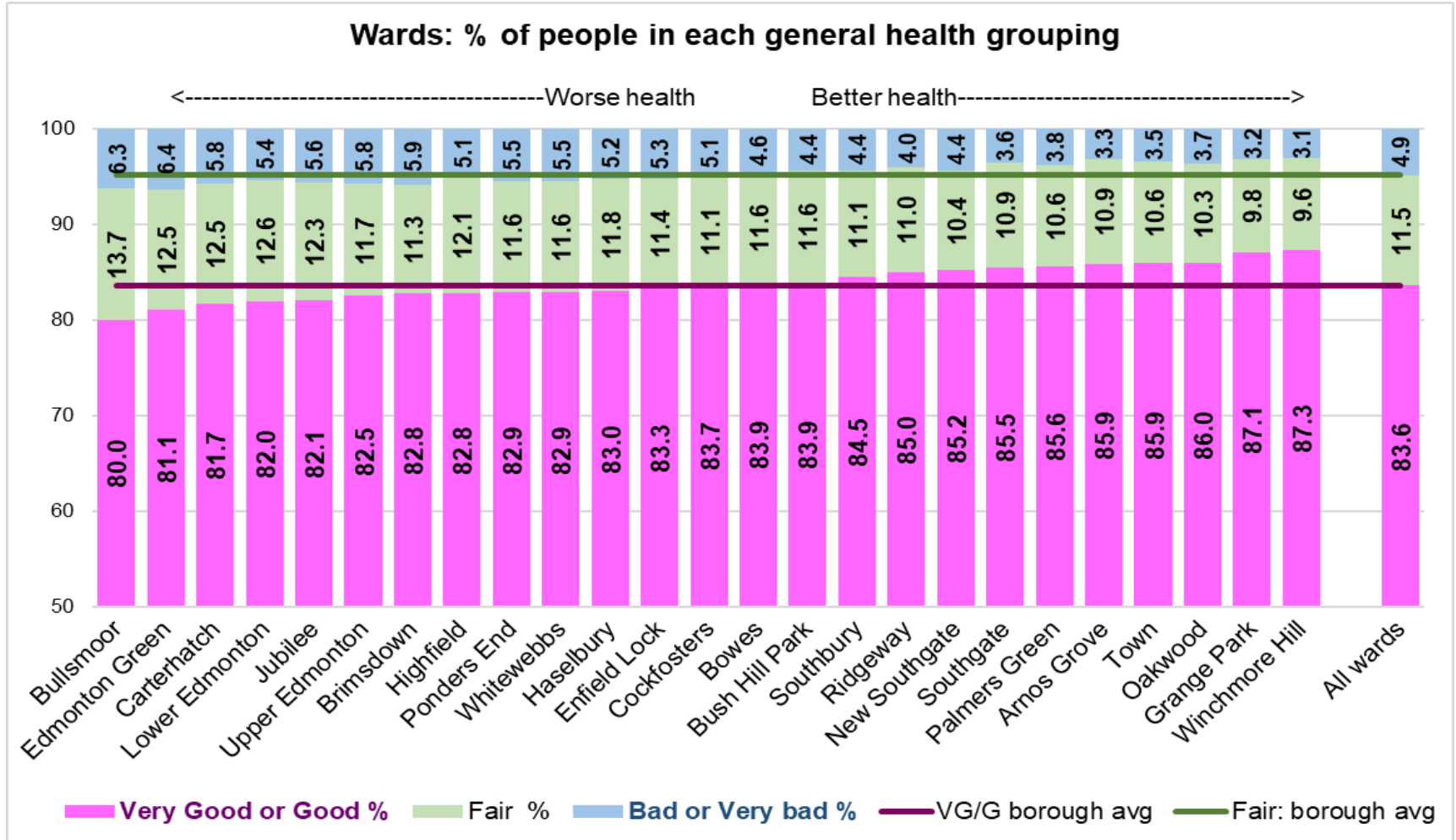
4.2% of Londoners have Bad or Very Bad health

© Crown Copyright and Database rights 2023
Ordnance Survey Licence no. 100019820



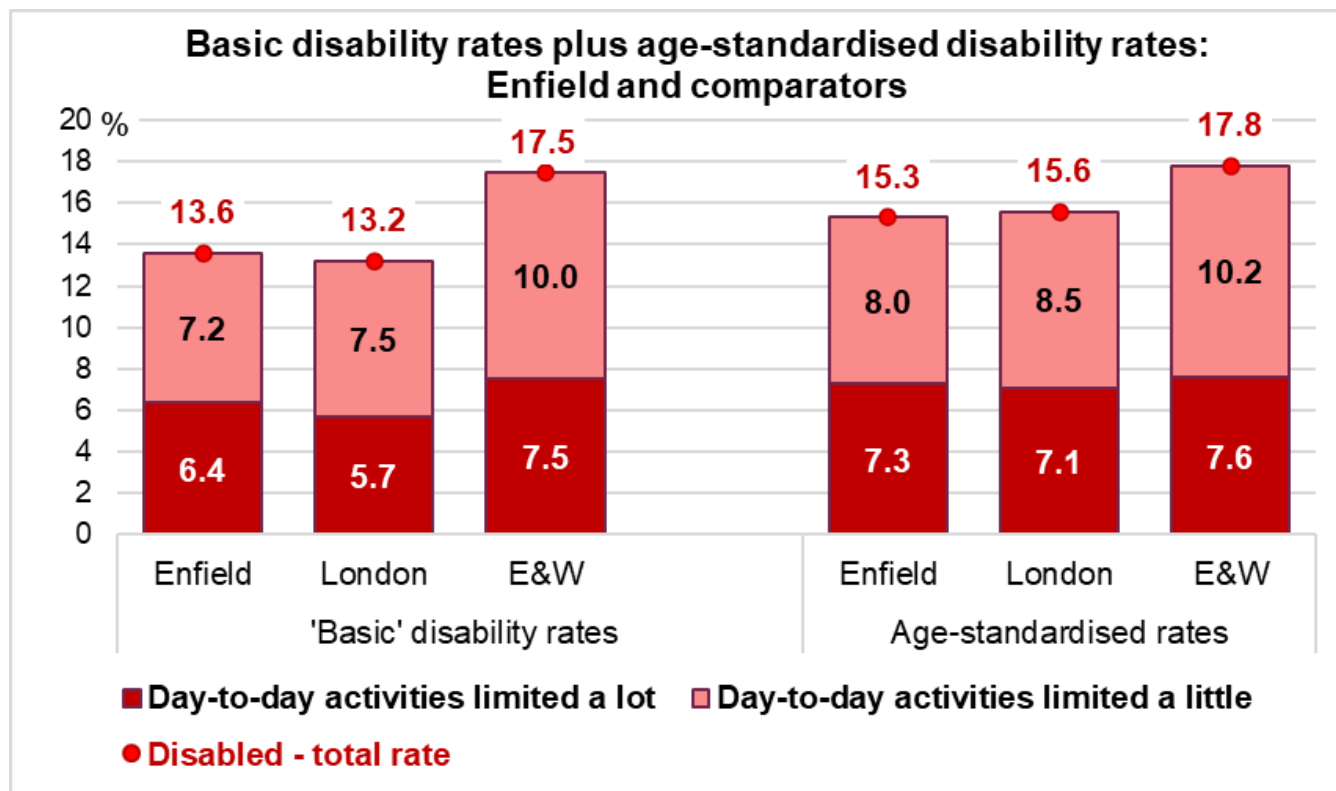
Enfield has fifth highest rate of 'Bad or Very bad' health in the 33 London boroughs

2021 Census: General Health – Enfield wards



2021 Census: Disability

- 44,900 people in Enfield have a disability - 13.6% of the total population.
 - 7.2% have day-to-day activities limited a little;
 - 6.4% - limited a lot.
- Compared with the rest of England and Wales, relatively fewer Enfield residents have activity-limiting disabilities, even when the data are adjusted for age.



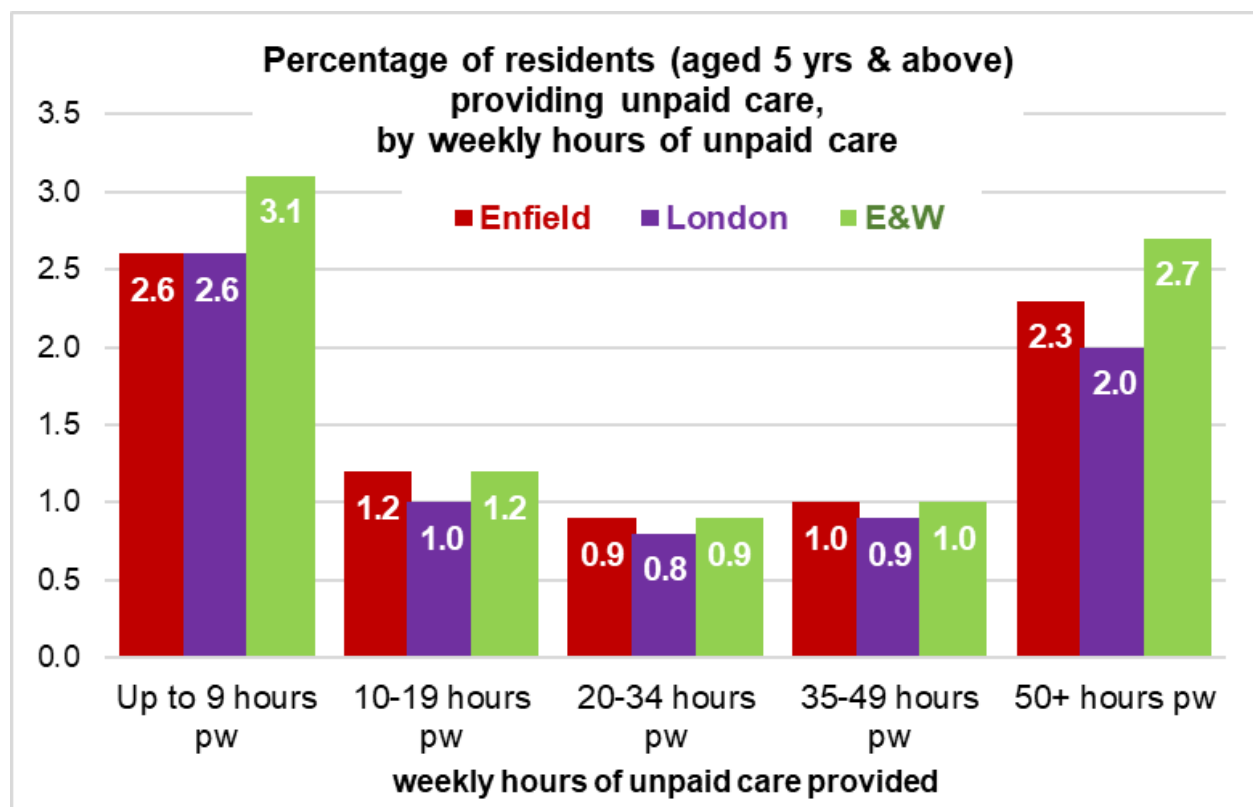
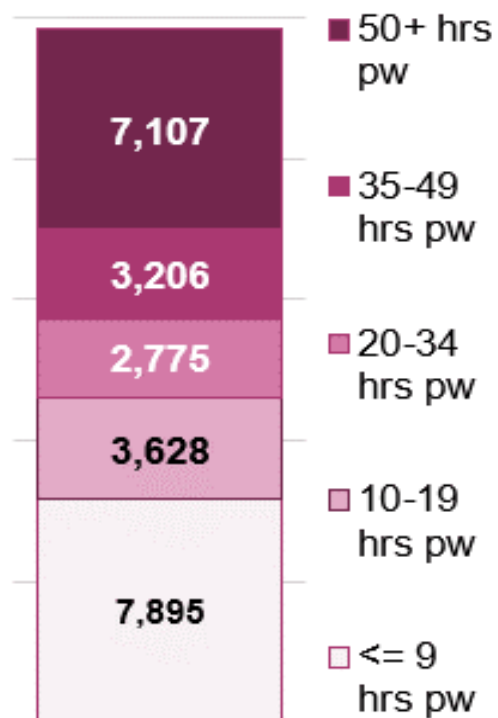
Disparities between wards –

- 16.7% in Bullsmoor are disabled
- 11.9% in Grange Park.

2021 Census: Provision of Unpaid Care

- 24,611 Enfield residents aged 5 years and over (8%) provide unpaid care for someone else –
 - 7,100 provide care for over 50 hours per week.
- Compared with 2011, fewer people overall are providing unpaid care, but more people are caring for more than 20 hours a week.

People providing unpaid care



2021 Census

This has covered the main topic summaries released by the Office for National Statistics

Multivariate data is available from the Office for National Statistics, using their flexible table builder in the link below:

[Create a custom dataset - Office for National Statistics \(ons.gov.uk\)](#)

Please read ONS information on [statistical data control](#) and how it affects totals and summed values