

# 263 Bullsmoor Lane Public Consultation

London Borough of Enfield

## Introduction

This development is part of the London Borough of Enfield’s ambitious target to build around 3,500 new homes over the next 10 years and aims to deliver innovative housing by unlocking potential within underutilised sites. It aims to create added value for existing residents with improvements to public areas and external landscaping. Enfield also aspires to create sustainable developments through energy efficient design.

The scheme seeks to utilise the site next to the New River, to provide high quality houses set within new landscaping — thus delivering an excellent solution to making efficient use of land, providing private parking on site, contributing to the challenge of delivering sustainable low carbon and highly energy efficient housing, and contributing to meeting local housing need. It is a pioneering environmental and socially focused development which will deliver much needed living space for individuals and families in need of affordable housing.

## Project Team



**Enfield Council**  
The Council



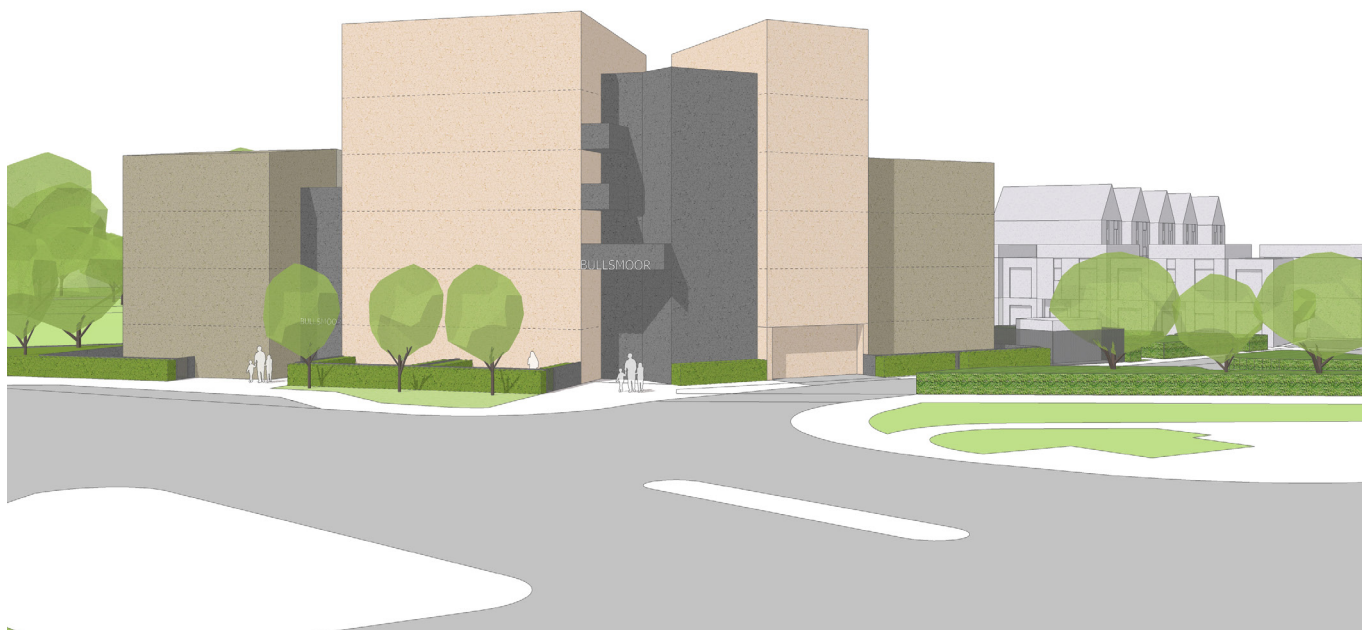
**ZED PODS Ltd**  
Architect

## Proposal

- The Site
- Proposed Development
- ① New Proposed Access (Vehicles Only)
- ② Reception
- ③ Existing Access (Pedestrian & Cyclists)
- ④ Street Front Landscaping
- Ⓐ Proposed Play Areas
- Greenbelt
- Kingswood Nurseries



Above: Proposed Site Plan

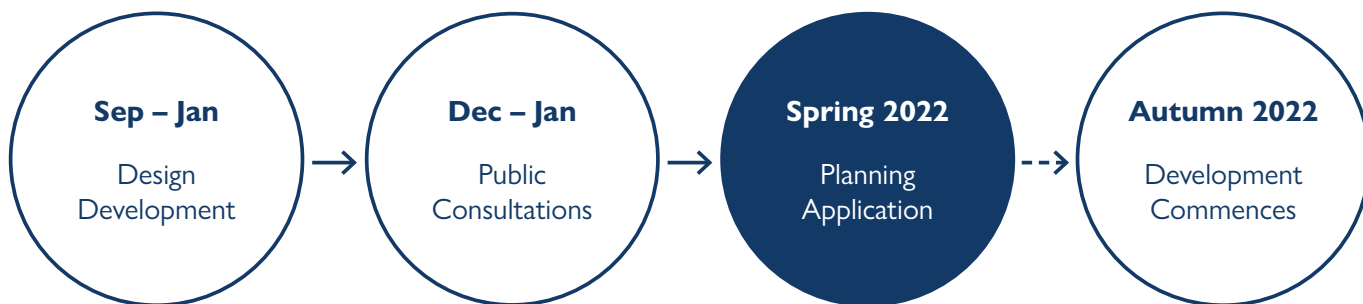


Street view from A10 - Great Cambridge Road



Street view from Bullsmoor Lane looking towards North-east

## Timeline



## For Further Information, Please Visit The Enfield Council Website



### Housing renewal schemes — Bullsmoor Lane

<https://new.enfield.gov.uk/services/housing/housing-development-and-renewal/#13>



Scan the QR code  
will direct you to the  
webpage above

## We would like your suggestions and feedback

We would love to hear your feedback and suggestions on our proposal.  
To do so please use the following methods:



To call Enfield Council and discuss the project further **020 8078 9072**



Scan this document and email us at **projects@zedpods.com**

Name: \_\_\_\_\_ Email: \_\_\_\_\_

Postcode: \_\_\_\_\_

Feedback: \_\_\_\_\_

\_\_\_\_\_

\_\_\_\_\_

\_\_\_\_\_

\_\_\_\_\_



Leave your comments and feedback on the online form on our website  
**[www.zedpods.com/bullsmoor-lane-enfield](http://www.zedpods.com/bullsmoor-lane-enfield)**



Scan the QR code  
will direct you to the  
webpage above