

PERMANENT CONTINUATION OF CHANGES TO PARKING PLACES IN ASHFIELD PARADE N14 AND PLACEMENT OF PARKLETS (STRUCTURES IN PARKING BAYS)

Further information may be obtained from journeysandplaces@enfield.gov.uk

1. **NOTICE IS HEREBY GIVEN** that the Council of The London Borough of Enfield (the Council) have made The Enfield (Parking Places) (Pay and Display) (No. 1) Traffic Order 2025 under sections 6, 45, 46 and 124 of Part IV of Schedule 9 to the Road Traffic Regulation Act 1984 as amended. The Order makes permanent the provisions of the experimental Order advertised in a Notice dated 10th January 2024.

2. The general effect of the Order is to permanently, from the 20th March 2025 remove a 5 metre section of parking bay on both sides of Ashfield Parade N14 for the placement of Parklets (wooden structures).

Parking bays removed:

- (a) A 5 metre length on the north-west side of the road located partly between property Nos. 8 and 10 Ashfield Parade; and
- (b) A 5 metre length on the south-east side of the road located mainly outside property No. 9 Ashfield Parade.

3. A copy of the Order, which will come into operation 20 March 2025, and any other relevant documents can be inspected at the Town Library, 66 Church Street, Enfield EN2 6AX, Monday to Fridays 9am – 5pm inclusive. until the end of six weeks from the date on which the Orders are made or viewed online at: <https://new.enfield.gov.uk/services/roads-and-transport/traffic-management-orders/>.

Copies of relevant documents can also be obtained by emailing traffic@enfield.gov.uk or by writing to Traffic and Transportation (quoting reference TG52/1535 Civic Centre, Silver Street, Enfield, Middlesex, EN1 3XD).

4. Any person desiring to question the validity of the Orders or of provision contained therein on the grounds that it is not within the relevant powers of the Road Traffic Regulation Act 1984 or that any of the relevant requirements thereof or of any relevant regulation made thereunder has not been complied with in relation to the Orders may, within six weeks of the date on which the Orders were made, make application for the purpose to the High Court.

Dated 19 March 2025

Jonathan Goodson
Traffic Engineering Manager



THE COUNCIL OF THE LONDON BOROUGH OF ENFIELD TRAFFIC MANAGEMENT ORDER

2025 No. 8

The Enfield (Parking Places) (Pay and Display)
(No. 1) Traffic Order 2025

Made 19 March 2025

Coming into operation 20th March 2025

The Council of the London Borough of Enfield, after consulting the Commissioner of Police of the Metropolis, in exercise of the powers conferred by sections 45, 46, 49, 51 of the Road Traffic Regulation Act 1984(a), as amended, and of all other powers thereunto enabling, hereby make the following Order:

Citation and commencement

1. This Order may be cited as the Enfield (Parking Places) (Pay and Display) (No. 1) Traffic Order 2025 and shall come into operation on 20 March 2025.

Interpretation

2. (1) In this Order, “the Order of 2007” means the Enfield (Parking Places) (Pay and Display) (Various Roads) (Special Parking Area) (No. 1) Order 2007(b);

(2) Any reference in this Order to any enactment shall be construed as a reference to that enactment as amended, applied, consolidated, re-enacted by or as having effect by virtue of any subsequent enactment;

(a) 1984 c.27

(b) L.B.E. 2007/8

(3) Unless the context otherwise requires, any expression used in this Order which is also used in the Order of 2007 shall have the same meaning as in that Order.

Amendment to the Order of 2007

3. Without prejudice to the validity of anything done or to any liability incurred before the coming into operation of this Order, the Order of 2007 shall have effect as though –

- (i) for the parking places numbered 1 and 2 in Schedule 8 to that Order there were substituted the items similarly numbered and set out in columns 1, 2 and 3 of the schedule to this Order; and
- (ii) there were added to Schedule 8 to that Order the item numbered 21 (Ashfield Parade) and 22 (Ashfield Parade) set out in columns 1, 2 and 3 of the Schedule to this Order.

Designation of parking place and application of the Order of 2007 thereto

4. (1) The area on a highway comprising the length of carriageway of a street specified in column 2 of the Schedule to this Order and, bounded on one side of that length by the edge of the carriageway and having a width throughout of 1.83 metres is designated as a parking place.

(2) The provisions of the Order of 2007 (other than Articles 3, 4 and 20) shall apply to the area designated as a parking place by this Order as if in those provisions any reference to a parking place included a reference to the area designated as a parking place by this Order and as if any reference to Schedule 8, Part I to the Order of 2007 included a reference to the Schedule to this Order.

Placing of traffic signs, etc.

5. The Council shall:

- (a) place and maintain traffic signs indicating the limits of the parking place designated by this Order;
- (b) place and maintain in or in the vicinity of the parking place designated by this Order traffic signs indicating that such parking place may be used during the permitted hours for the leaving only of the vehicles specified in Article 5, 7 and 9 of the Order of 2007 or as amended;
- (c) place and maintain traffic signs in or in the vicinity of each parking place indicating:
 - i. that the parking place may be used by vehicles in respect of which payment of the parking charge is made using the electronic payment system; and
 - ii. the location identification number of the parking place or part thereof;

- (d) carry out such other work as is reasonably required for the purposes of the satisfactory operation of a parking place.

Dated this nineteenth day of March 2025

A handwritten signature in black ink, appearing to read "J.B. Gan". The signature is written in a cursive, flowing style.

Traffic Engineering Manager
(The officer appointed for this purpose)

SCHEDULE [see Article 4]

SCHEDULE 8 – SOUTHGATE AREA

PART I

IN RELATION TO A PARKING PLACE REFERRED TO IN THIS PART OF THIS SCHEDULE THE EXPRESSION “PERMITTED HOURS” MEANS THE PERIOD BETWEEN 8 A.M. AND 6.30 P.M. ON MONDAYS TO SATURDAYS INCLUSIVE, ANY SUCH DAY NOT BEING CHRISTMAS DAY, GOOD FRIDAY OR A BANK HOLIDAY.

PARKING PLACE IN WHICH A VEHICLE MAY BE LEFT DURING THE PERMITTED HOURS FOR A MAXIMUM PERIOD OF TWO HOURS, PROVIDED THAT PAYMENT OF THE PARKING CHARGE HAS BEEN MADE.

NO VEHICLE IN RESPECT OF WHICH PAYMENT OF THE PARKING CHARGE HAS BEEN MADE, AND WHICH HAS BEEN TAKEN AWAY FROM A PARKING PLACE DURING THE PERMITTED HOURS, SHALL AGAIN BE LEFT IN THAT PARKING PLACE DURING THE PERMITTED HOURS UNTIL THE EXPIRATION OF 1 HOUR FROM THE TIME THAT VEHICLE WAS TAKEN AWAY FROM THAT PARKING PLACE.

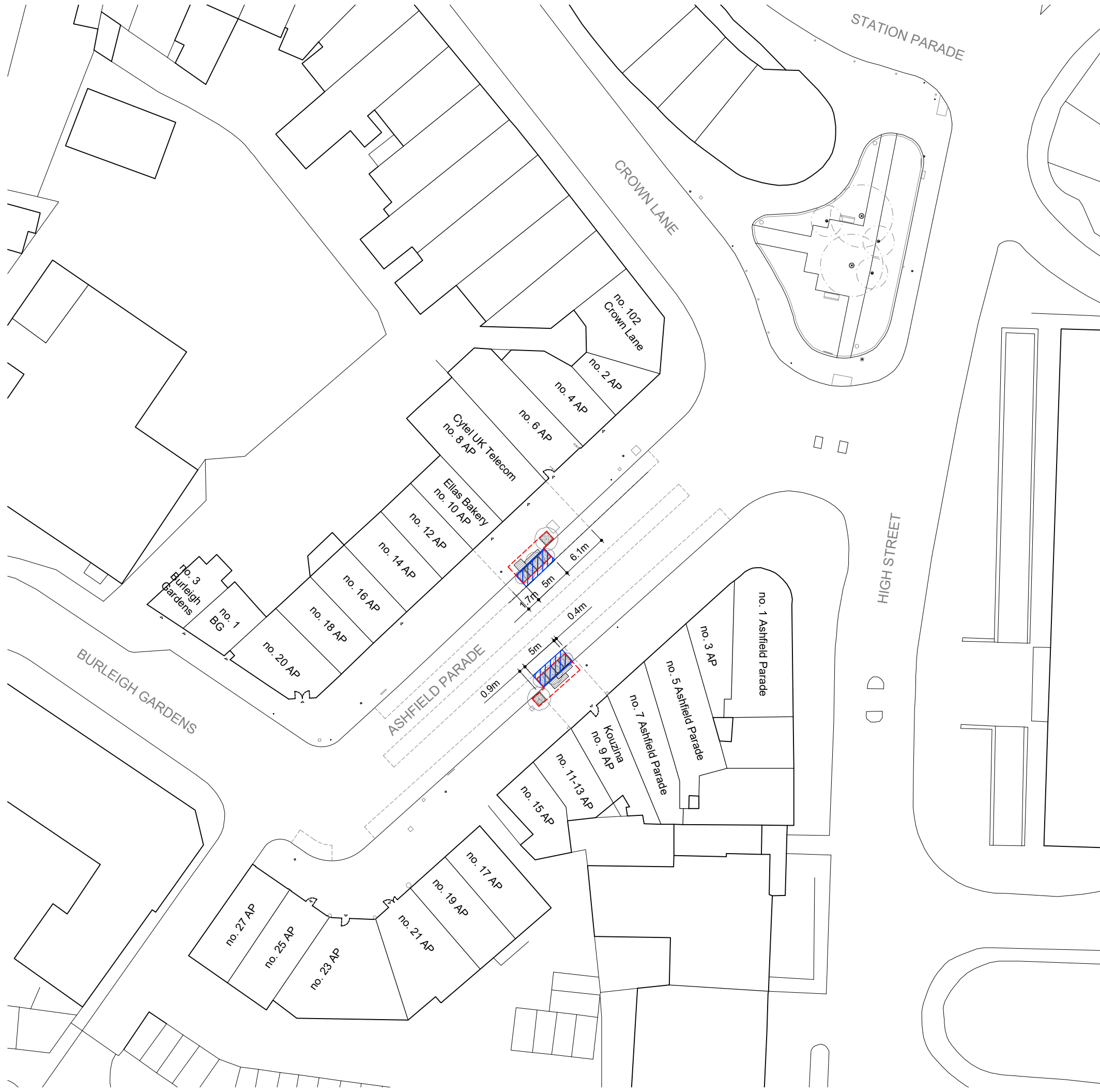
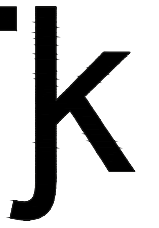
1 No. of parking place	2 Designated parking place	3 Special manner of standing of vehicles in parking place
1.	ASHFIELD PARADE, the north-west side, from the common boundary of Nos. 2 and 4 Ashfield Parade to a point 6.1 metres south-west of the party wall of Nos. 6 and 8 Ashfield Parade.	-
2.	ASHFIELD PARADE, the south-east side, from a point 4.5 metres north-east of a point opposite the party wall of Nos. 2 and 4 Ashfield Parade and a point 0.4 metres south-west of the common boundary of Nos. 7 and 9 Ashfield Parade.	-
21.	ASHFIELD PARADE, the north-west side, from a point 1.7 metres north-east of the party wall of Nos. 10 and 12 Ashfield Parade to the common boundary of Nos. 18 and 20 Ashfield Parade.	-

1 No. of parking place	2 Designated parking place	3 Special manner of standing of vehicles in parking place
22.	ASHFIELD PARADE, the south-east side, from a point 0.9 metres north-east of a point opposite the party wall of Nos. 9 and 11 Ashfield Parade and the common boundary of Nos. 19 and 21 Ashfield Parade.	-

EXPLANATORY NOTE

(This Note is not part of the Order, but is intended to indicate its general purport.)

This Order amends designated pay parking place in Ashfield Parade N14 in the London Borough of Enfield.



Client
London Borough of Enfield

Project name
**Enfield Phase 3:
Ashfield Parade Parklets**

Project number
211

Drawing name
Location Plan

Drawing number
001

Scale
1:500

Revision
A

Drawing status
Information

Page size
A3

Date
30/11/23

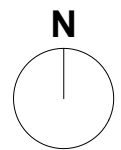
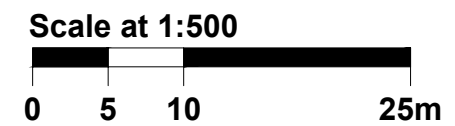
Drawn by
CT

Checked by
-

Do not scale from this drawing. Report any discrepancies. Copyright owned by Jan Kattein Architects.

- Proposed Parklets Location
- Proposed Parking Suspension

Rev A: Annotations update - 08/12/23



JAN KATTEIN ARCHITECTS

277 New North Road
London N1 7AA / UK
+44 (0)20 7704 0604

www.jankattein.com / mail@jankattein.com