



Reardon Court

Construction Phase Newsletter

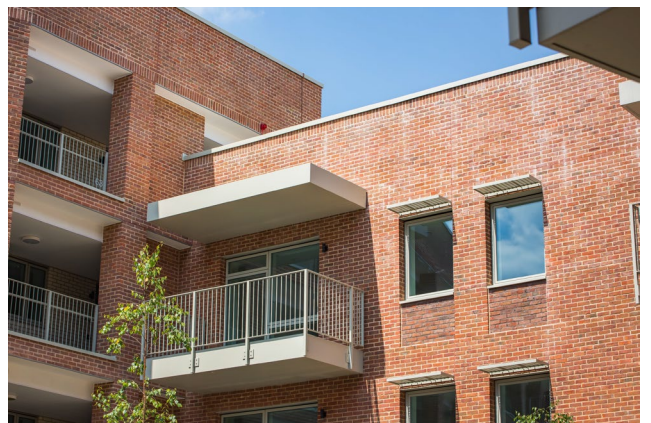
Issue 8

July 2024

Dear Resident

Welcome to the eighth edition of our Newsletter for the Reardon Court project. This is the final edition of our quarterly newsletter, as the building has been fully handed over to Enfield Council. Residents have already started to move in, and we hope to have the scheme full by the end of September with residents moving into their apartments.

We would like to take this opportunity to thank all of our neighboring residents. Your cooperation, support and understanding has been invaluable in achieving this fantastic development project. We are proud of what we have accomplished together and trust that this development will continue to grow this community.



Site Progress Photos



Here To Help

As always, if you have any queries or concerns, or if you would like any further information, please do not hesitate to contact us via the details at the bottom of the page or by post:

GRAHAM Site Office

Reardon Court, Cosgrove Close, Winchmore Hill, London, N21 3BH

Enfield Council Contact Details

If for any reason you would like to contact Enfield Council about the scheme, please contact the persons below.

Claire Feiner

Claire.feiner@enfield.gov.uk

ReardonCourt@enfield.gov.uk

But for any site related queries or concerns, please use the details below.

Project Contact Details

Visit us at graham.co.uk

Jaco Enslin

Project Manager

07385422465

Jaco.Enslin@graham.co.uk

Roger Francis

Senior Site Manager

07385404776

Roger.Francis2@graham.co.uk