

# PM Peak Local Plan Regulation 19+Beyond Traffic Flows



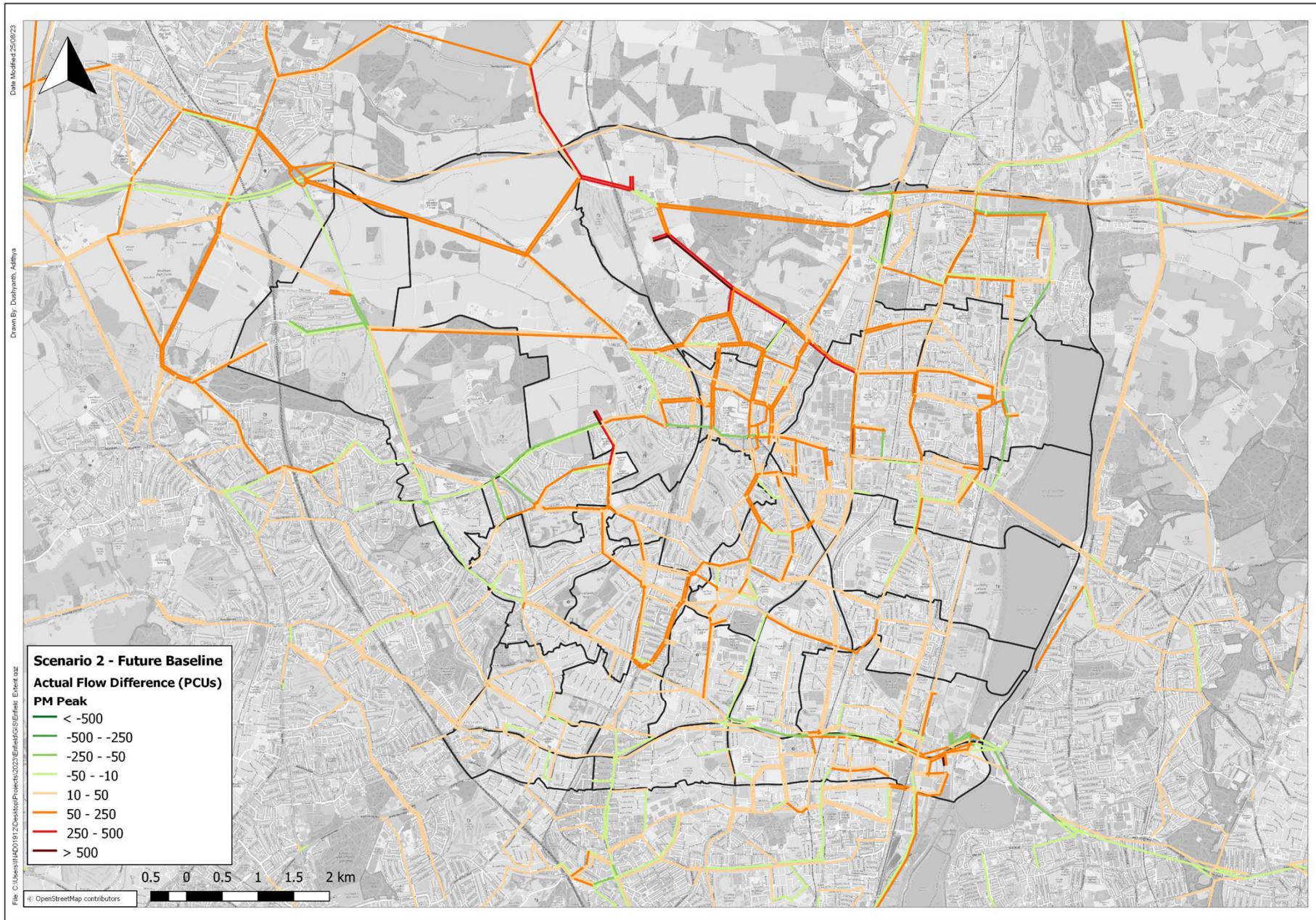


# PM Peak Local Plan Regulation 19+Beyond Traffic flows with Figure





# PM Peak LPR19+B-FB Traffic Flows





# PM Peak LPR19+B-FB Traffic Flows with Figures



# PM Peak Local Plan Regulation 19 + Beyond Traffic Flow Impact Summary

Main changes in traffic flows

- **Crews Hill** – increases on Cattlegate Road/ Theobalds Road up to 560 additional new vehicles
- **Chase Park** – increases on The Ridgeway/ Hadley Road/ Enfield Road up to 145 additional new vehicles
- **Meridian Water** – increases on north circular
- M25 increases – increases up to 90 on M25 westbound
- Carterhatch Lane eastbound – increases up to 300 vehicles
- A10 – some increases/ decreases in traffic flow between -60 and 130

# PM Peak Link V/C and Delay



# PM Peak Base Year Link V/C



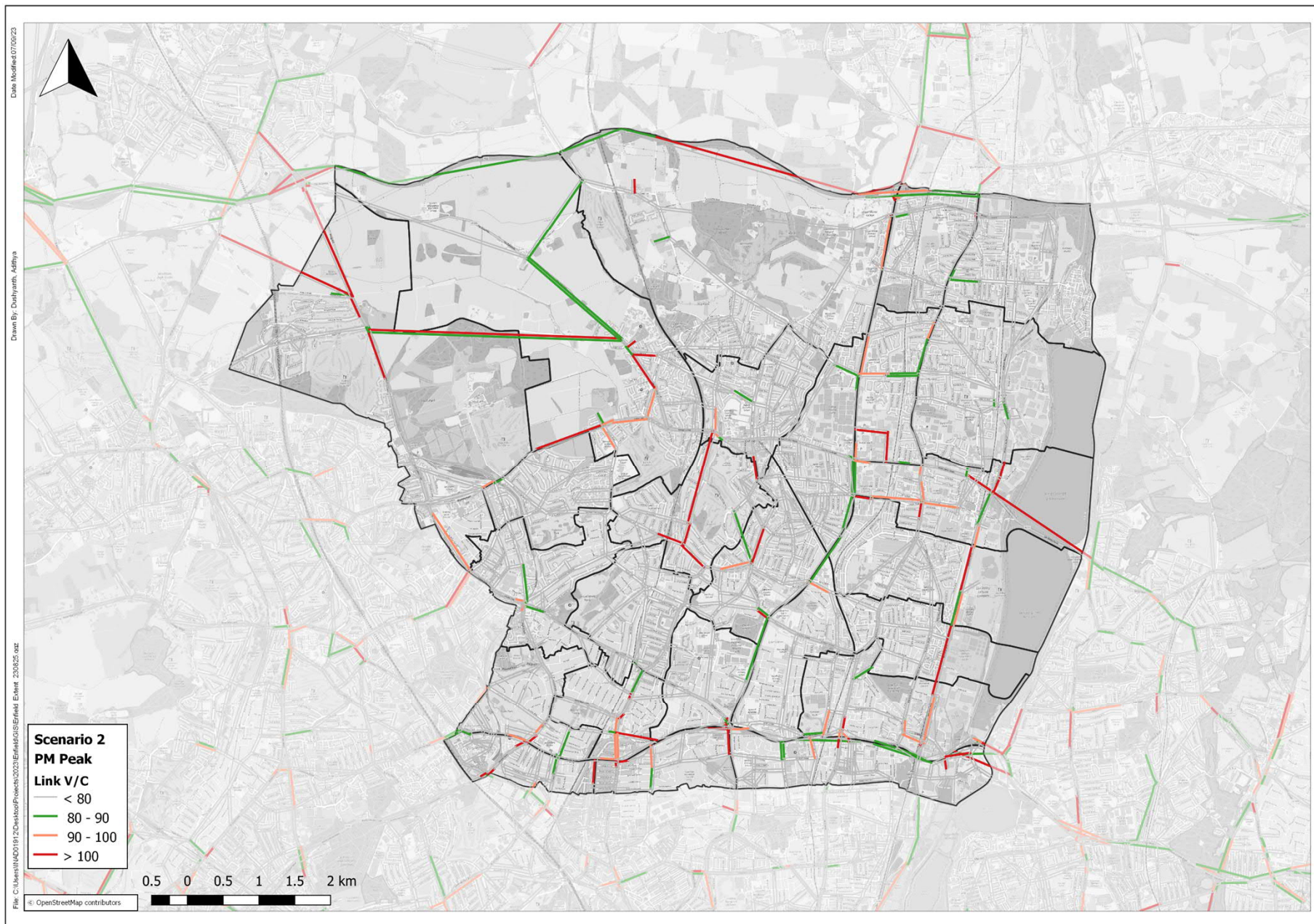


# PM Peak Future Baseline Link V/C



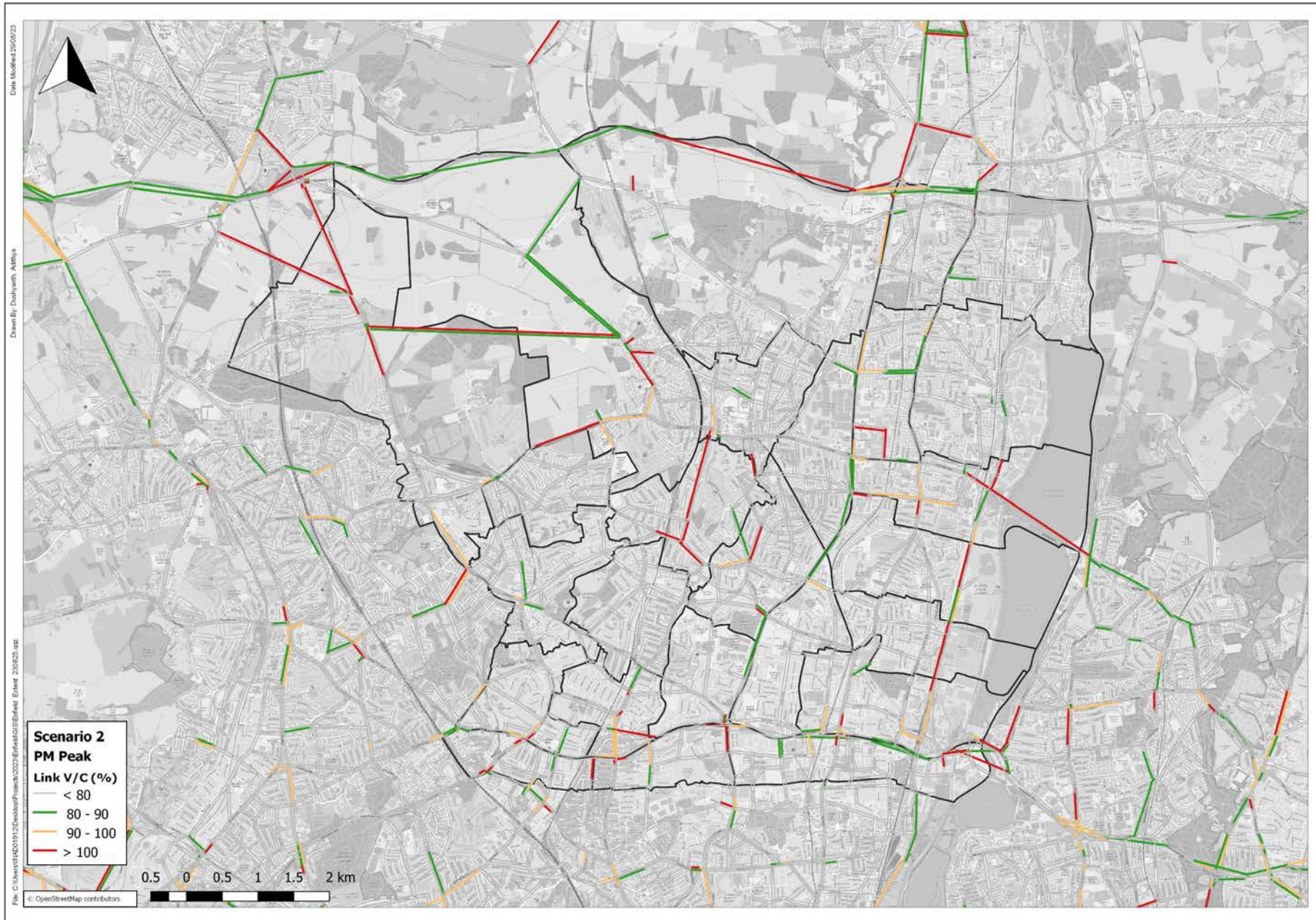


# PM Peak Local Plan Regulation 19 + Beyond Link V/C



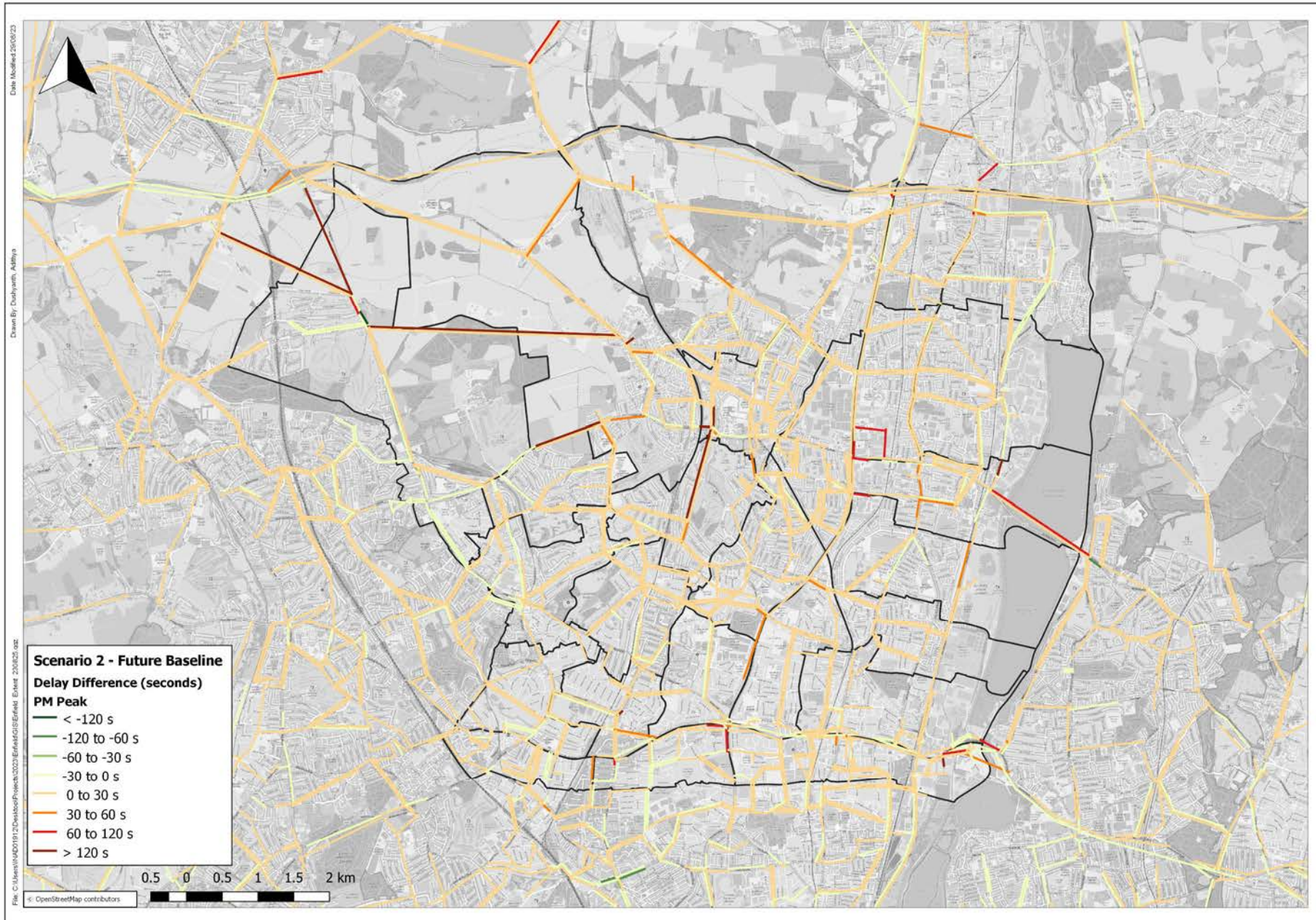


# PM Peak Local Plan Regulation 19 + Beyond Link V/C



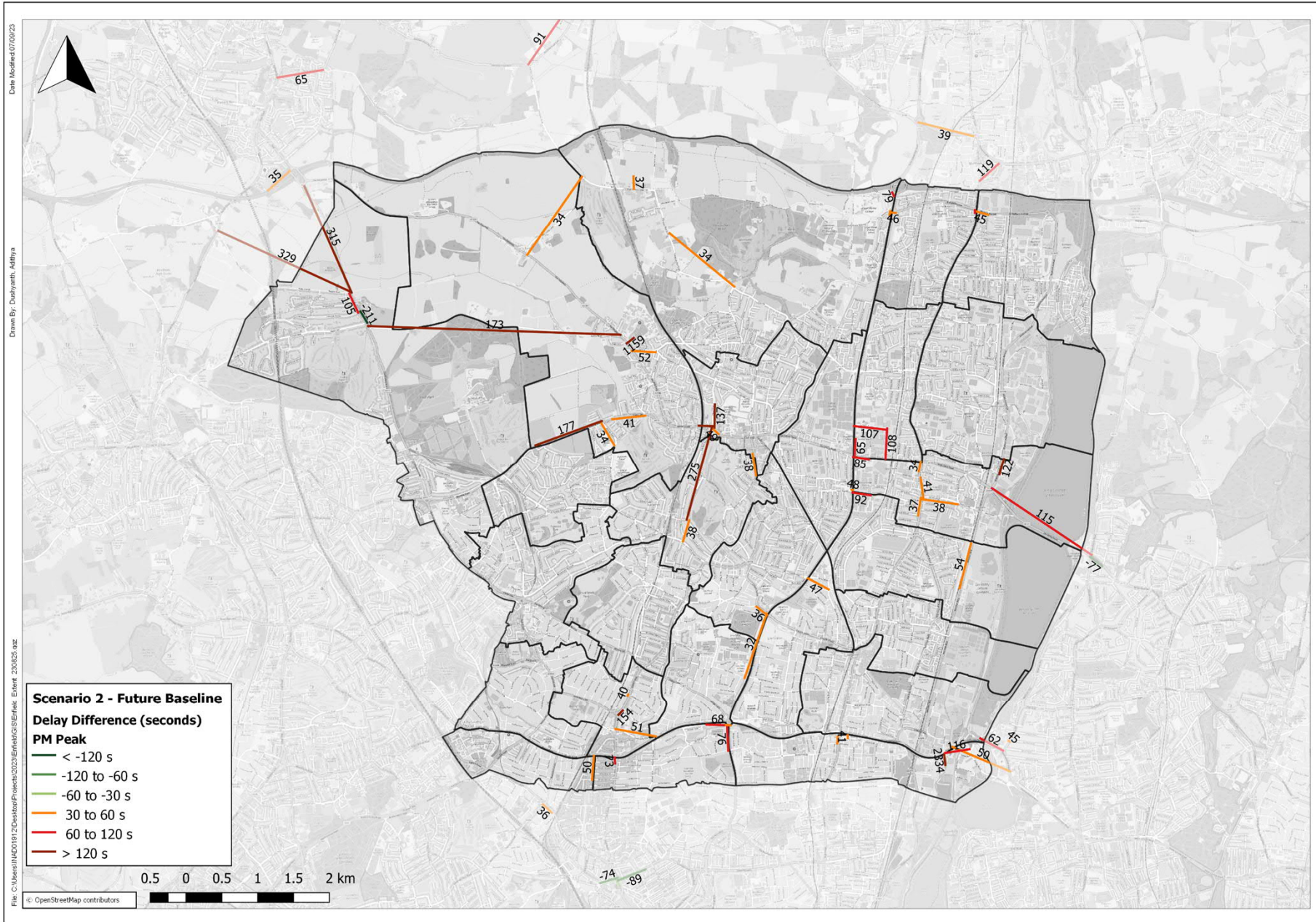


# PM Peak Link Delay Increase LPR19+B-FB





# PM Peak Link Delay Increase LPR19+B-FB with Figures





# PM Peak Local Plan Regulation 19 + Beyond Link V/C and Delay Impact Summary

Links where V/C increases as a result of the Local Plan include:

- Stagg Hill – delays increase by 316 seconds
- Wagon Road – delays increase by 329 seconds
- Hadley Road – delays increase by 1173 seconds
- Enfield Road – delays increase by 177 seconds
- A110 Lee Valley Road – delays increase by 115
- Delays at access points to the network are high for Crews Hill and Chase Park, more detailed work on how these trips access the highway network required



# PM Peak Junction V/C and Delay in Vehicle hours



# PM Peak Base Junction V/C





# PM Peak Future Baseline Junction V/C



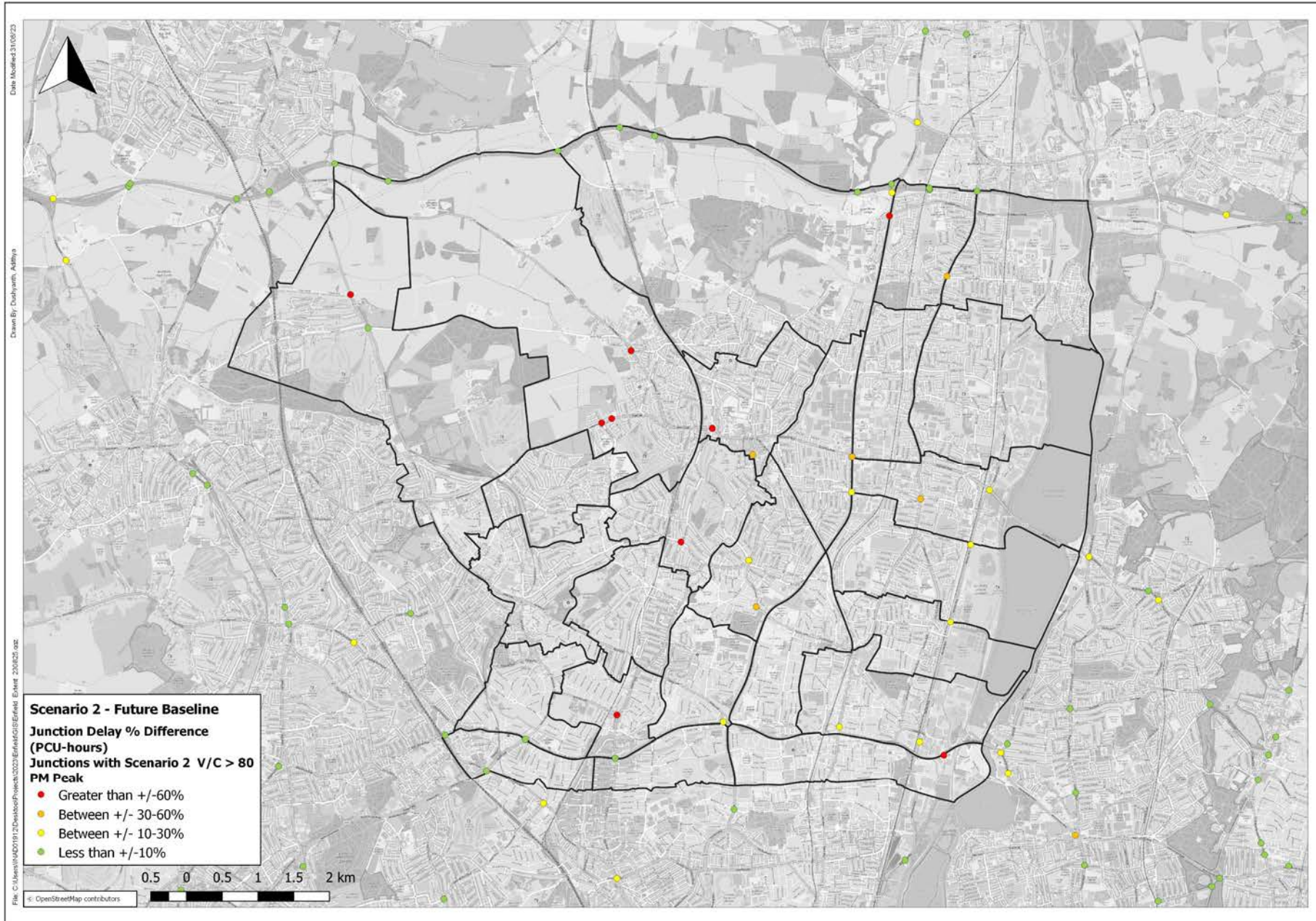


# PM Peak Local Plan Reg 19+Beyond Junction V/C





# PM Peak Increases in Junction Delay LPR19+B-FB





# PM Peak Local Plan Regulation 19 + Beyond Impacts Summary

Junctions where V/C increases to over 100 as a result of the Local Plan include:

- Wagon Road/ Stagg Hill
- Hadley Road – Chase Park access
- Green Dragon Lane Old Park Ridings
- North Circular junctions near Meridian Water A406/ A1009



# Railplan Results

- Public Transport trips to and from LBE have increased in LBE Regulation 19 compared to LBE Future Baseline in line with the increased housing and job assumptions

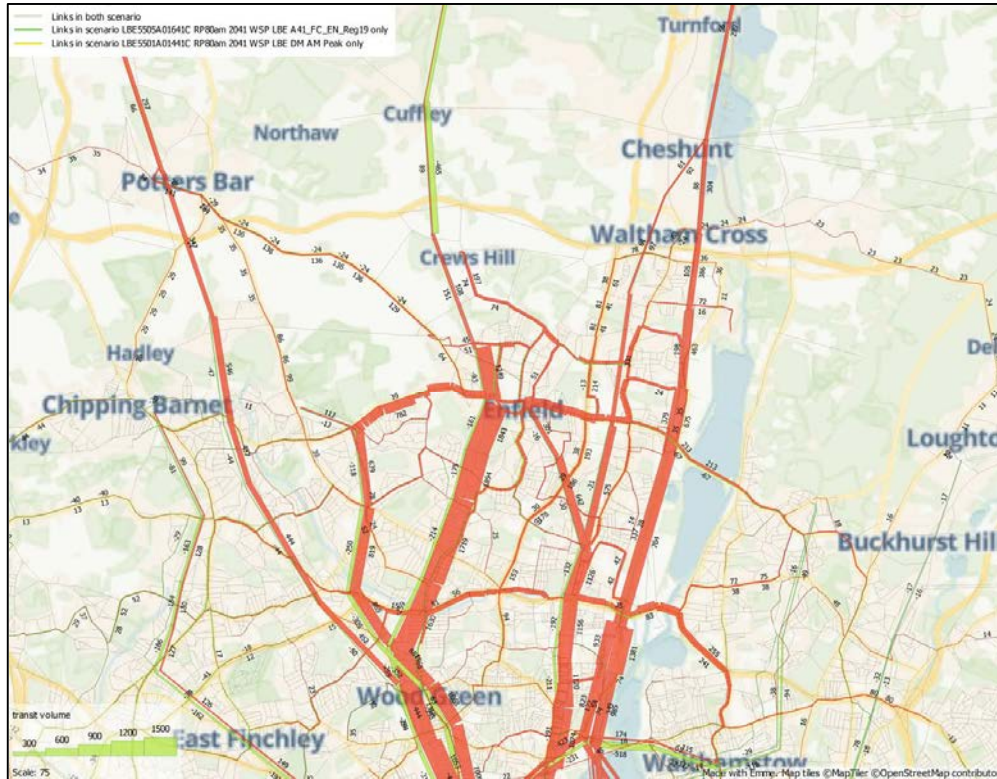
Peak 3 hour	LBE Future Baseline (It7)		LBE Regulation 19 (It7)		Difference (Abs)		Difference (%)	
	Origin	Destination	Origin	Destination	Origin	Destination	Origin	Destination
				46,985		1,022	14.8%	2.2%
<b>IP</b>	73,304	67,984	78,590	74,123		6,139	7.2%	9.0%
						8,567	5.2%	12.1%



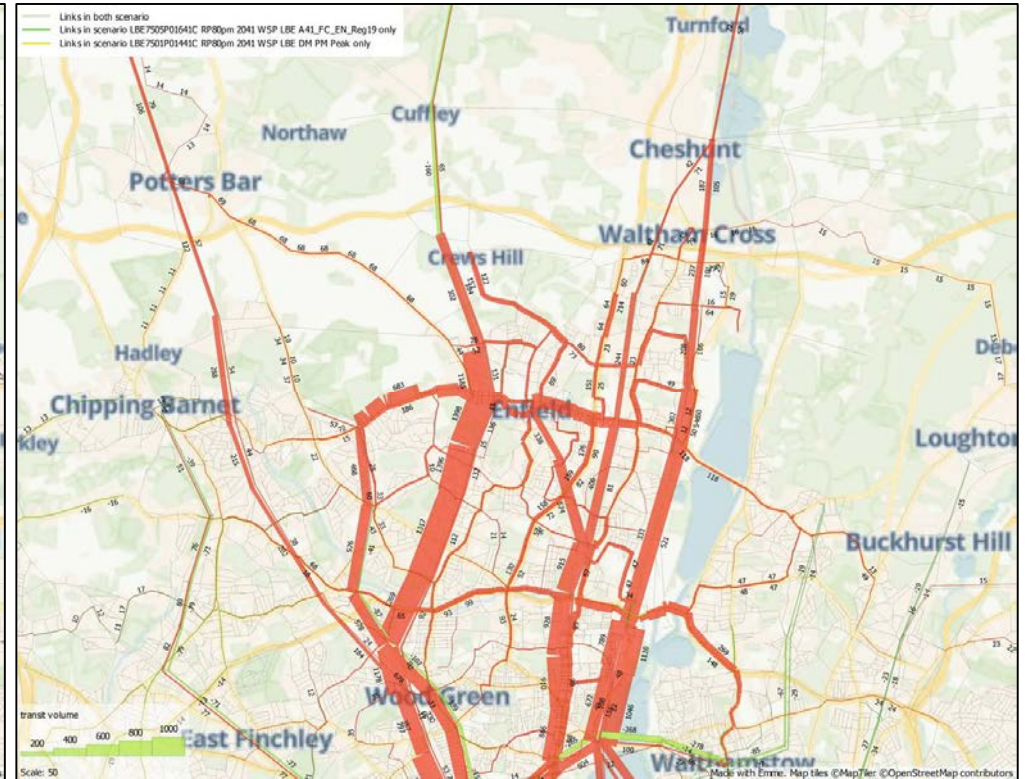
# Railplan Results

- Changes in public transport flow LBE Regulation 19 – LBE Future Baseline

AM Peak



PM Peak

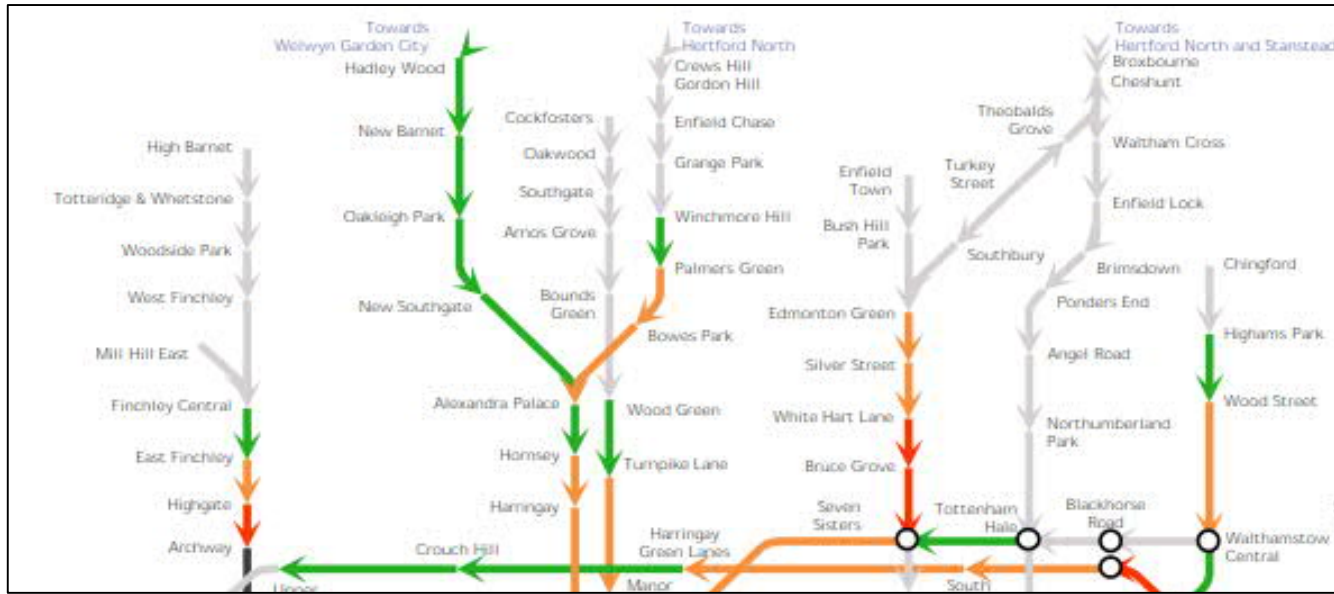


- Increases in public transport demand within LBE

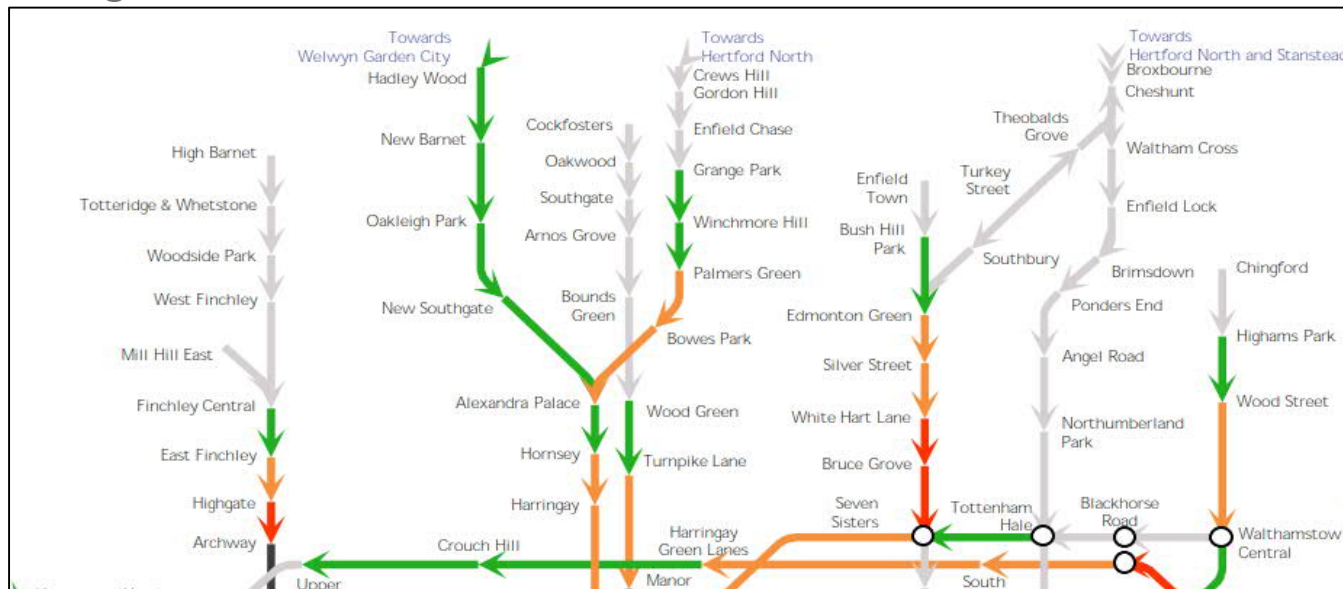


# Railplan Results

- AM Peak Rail Crowding Levels  
Future Baseline



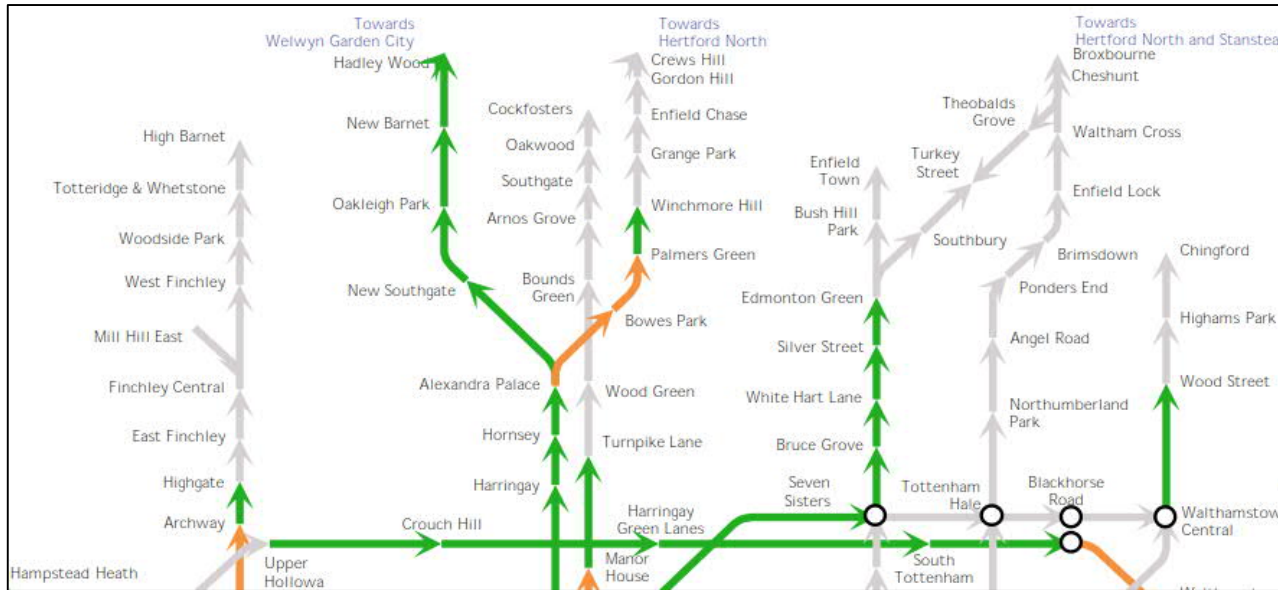
## Regulation 19



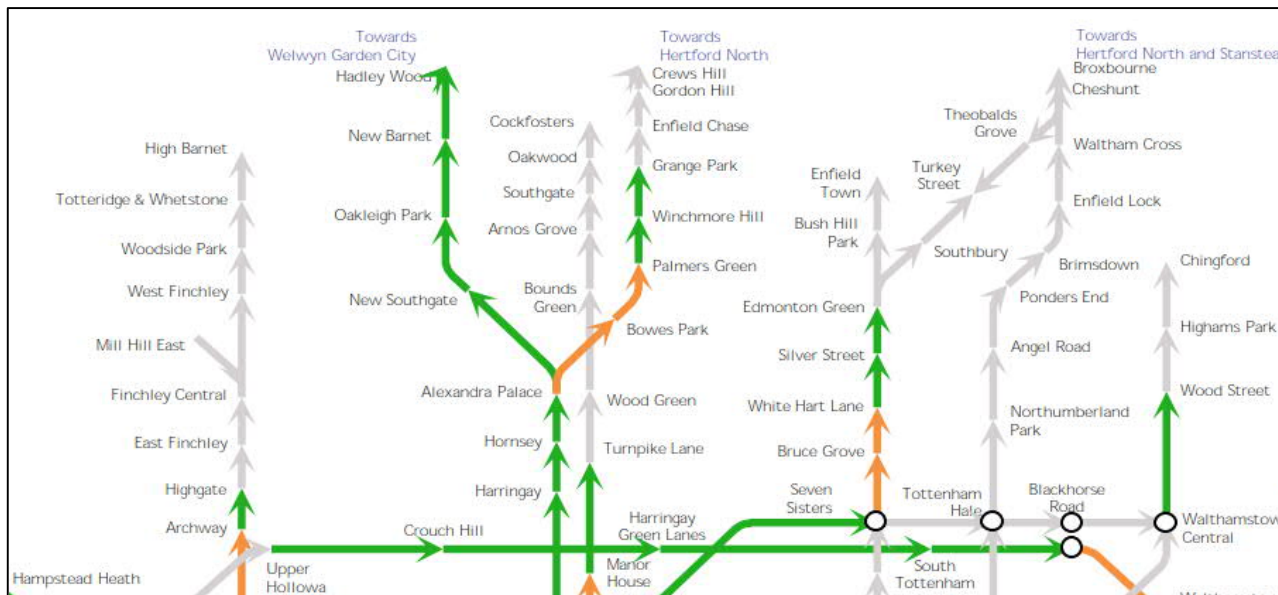


# Railplan Results

- PM Peak Rail Crowding Levels  
Future Baseline



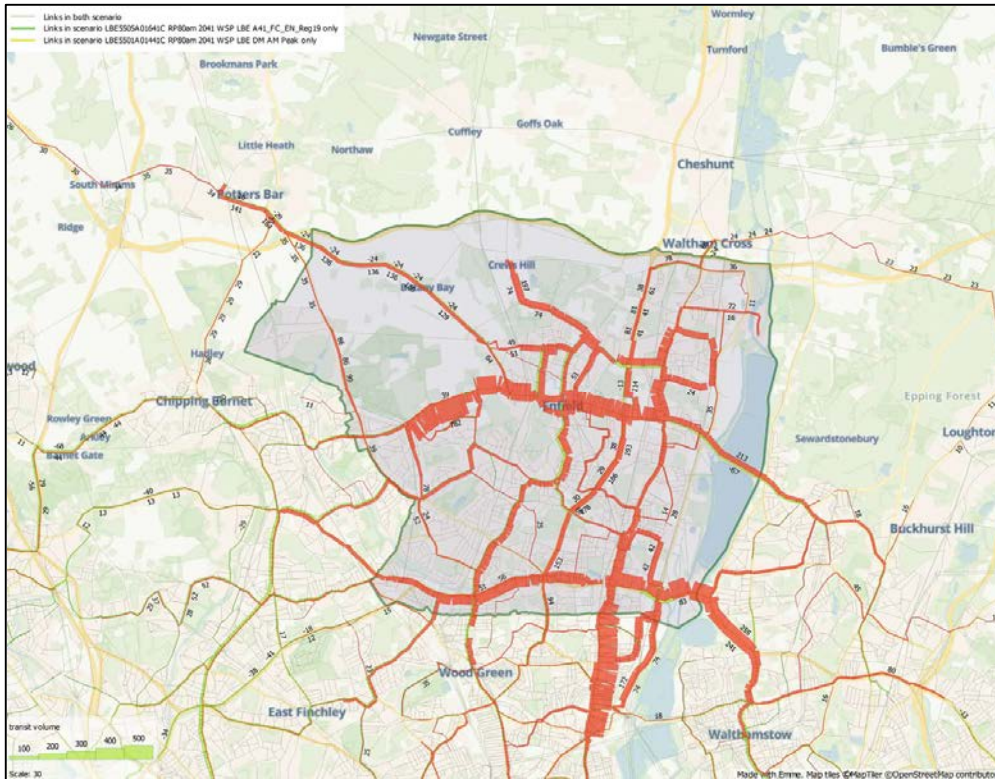
## Regulation 19



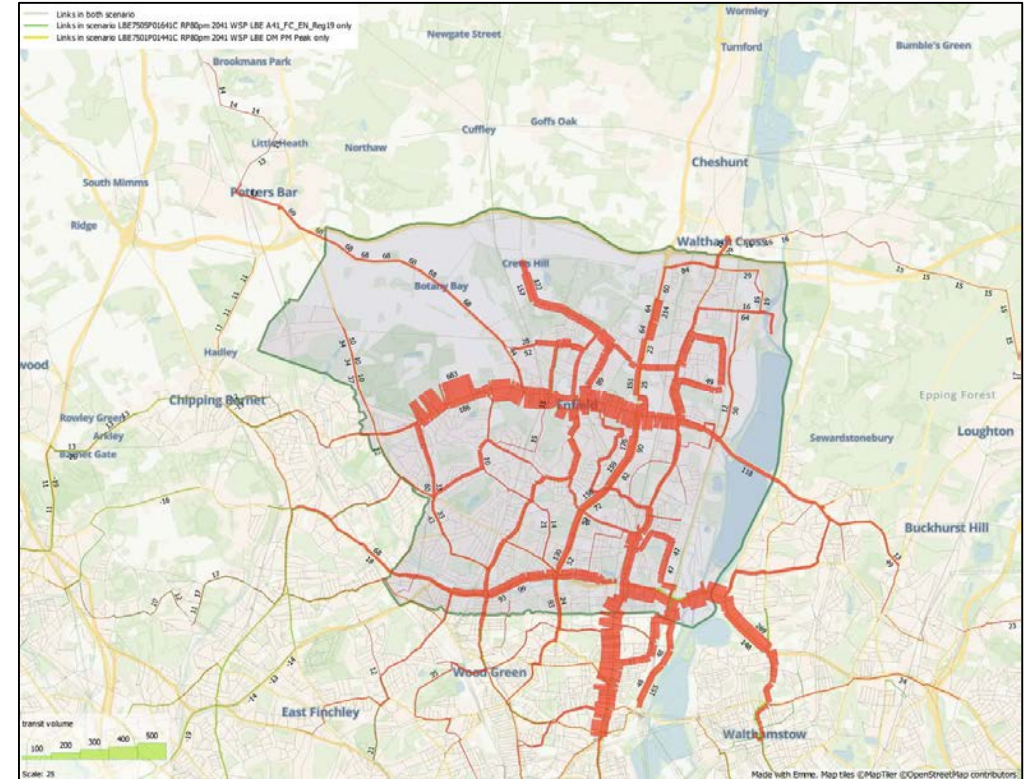
# Railplan Results

- Changes in bus flow LBE Regulation 19 – LBE Future Baseline

AM Peak



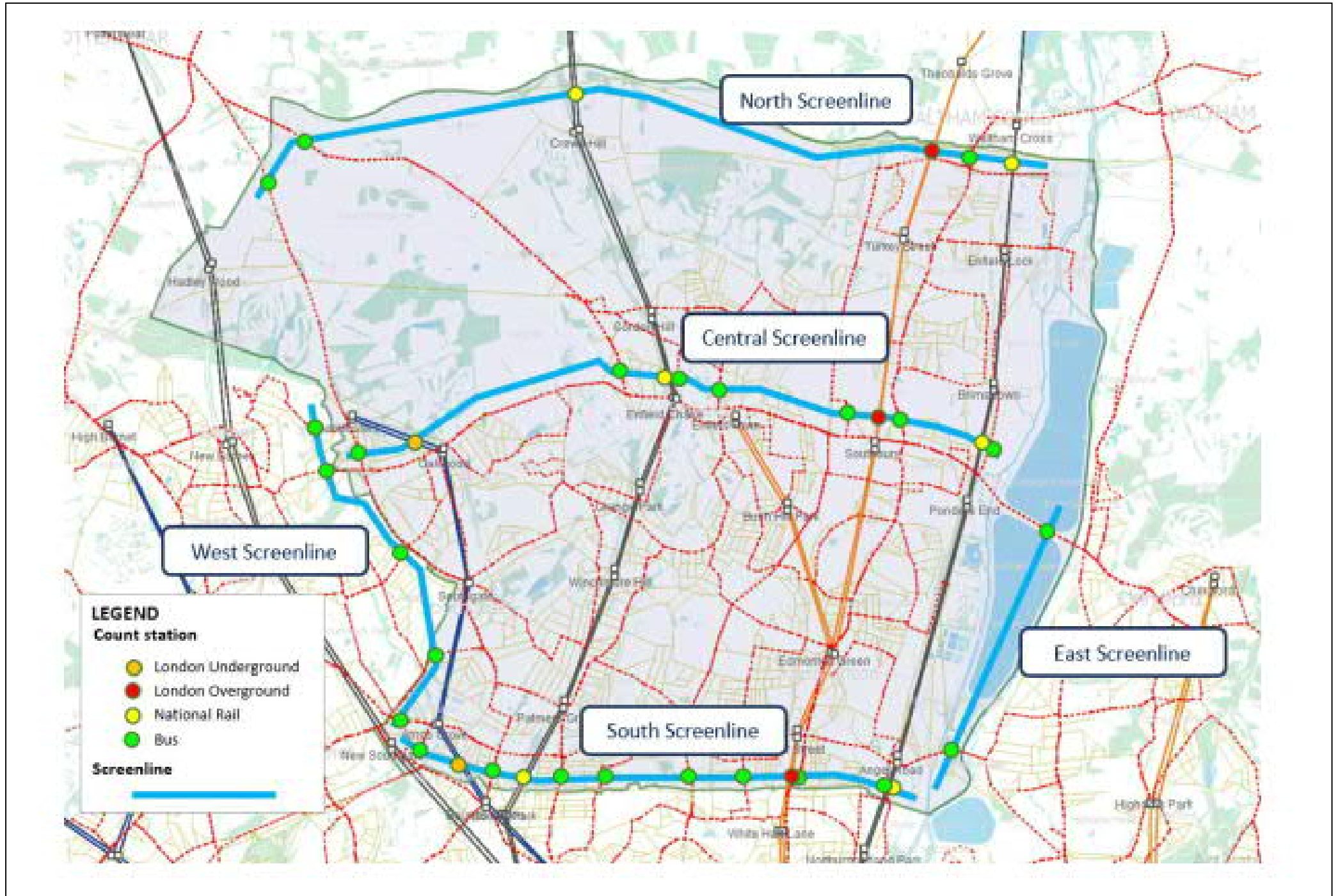
PM Peak



- Increases in bus demand within LBE



# Railplan Results



# Railplan Results

- Bus demand across Central Screenline

Corridor	Direction	Line	Route#	Line Name	Segment	AM Peak						PM Peak									
						LBE DM 2041 AM			LBE DS Reg 19 2041 AM			V/C Comparison		LBE DM 2041 PM			LBE DS Reg 19 2041 PM			V/C Comparison	
						Volume	Capacity	V/C	Volume	Capacity	V/C	LBE DM 2041 AM	LBE DS Reg 19 2041 AM	Volume	Capacity	V/C	Volume	Capacity	V/C	LBE DM 2041 PM	LBE DS Reg 19 2041 PM
NB		00W8ja	00W8	Picketts Lock - Chase Farm Hospital	537730-539069	167	667	0.25	140	667	0.21	0.25	0.21	110	696	0.16	147	696	0.21	0.16	0.21
		00W9ja	00W9	Southgate - Edmonton Green Shopping Centre	537730-539069	10	100	0.10	9	100	0.09	0.10	0.09	6	133	0.04	9	133	0.07	0.04	0.07
		0121ja	0121	Enfield Island Village - Turnpike Lane Bus Station	527372-527373	242	522	0.46	274	522	0.53	0.46	0.53	368	522	0.70	385	522	0.74	0.70	0.74
		0191ia	0191	Brimsdown - Edmonton Green Station	539077-537709	165	522	0.32	123	522	0.23	0.32	0.23	315	522	0.60	368	522	0.70	0.60	0.70
		0217ja	0217	Turnpike Lane Bus Station - Waltham Cross	529165-527171	164	319	0.51	155	319	0.49	0.51	0.49	189	377	0.50	231	377	0.61	0.50	0.61
		0279ja	0279	Manor House - Waltham Cross	527372-527373	369	667	0.55	357	667	0.54	0.55	0.54	355	609	0.58	363	609	0.60	0.58	0.60
		0298ia	0298	Arnos Grove - Potters Bar Station	537078-537081	63	261	0.24	63	261	0.24	0.24	0.24	31	232	0.13	42	232	0.18	0.13	0.18
		0299ia	0299	Muswell Hill - Cockfosters	537078-537081	2	120	0.02	2	120	0.02	0.02	0.02	1	150	0.01	1	150	0.01	0.01	0.01
		0307ja	0307	Barnet Hospital - Brimsdown	527372-527373	256	522	0.49	386	522	0.74	0.49	0.74	212	522	0.41	232	522	0.44	0.41	0.44
		0313ia	0313	Chingford Station - Potters Bar Station	537698-537699	29	180	0.16	38	180	0.21	0.16	0.21	23	180	0.13	28	180	0.15	0.13	0.15
		0313je	0313	External Route 313	537698-537699	46	260	0.18	63	260	0.24	0.18	0.24	36	260	0.14	42	260	0.16	0.14	0.16
		0313ke	0313	External Route 313	537698-537699	7	22	0.32	10	22	0.45	0.32	0.45	6	22	0.26	6	22	0.28	0.26	0.28
		0317ja	0317	Enfield - Waltham Cross	529165-527171	64	261	0.24	66	261	0.25	0.24	0.25	72	261	0.28	101	261	0.39	0.28	0.39
		0491ja	0491	North Middlesex Hospital - Waltham Cross	529173-529106	207	220	0.94	225	220	1.02	0.94	1.02	59	220	0.27	64	220	0.29	0.27	0.29
Central		0610ke	0610	External Route 610	537730-539069	-	87	-	-	87	-	-	-	87	-	-	87	-	-	-	
SB		00W8ia	00W8	Picketts Lock - Chase Farm Hospital	539069-537730	71	580	0.12	109	580	0.19	0.12	0.19	77	667	0.11	71	667	0.11	0.11	0.11
		00W9ia	00W9	Southgate - Edmonton Green Shopping Centre	539069-537730	0	100	0.00	0	100	0.00	0.00	0.00	2	167	0.01	2	167	0.01	0.01	0.01
		0121ia	0121	Enfield Island Village - Turnpike Lane Bus Station	527373-527372	380	522	0.73	431	522	0.83	0.73	0.83	178	522	0.34	207	522	0.40	0.34	0.40
		0191ja	0191	Brimsdown - Edmonton Green Station	537709-539077	400	522	0.77	529	522	1.01	0.77	1.01	264	522	0.51	256	522	0.49	0.51	0.49
		0217ia	0217	Turnpike Lane Bus Station - Waltham Cross	527171-529165	242	319	0.76	307	319	0.96	0.76	0.96	171	435	0.39	177	435	0.41	0.39	0.41
		0279ia	0279	Manor House - Waltham Cross	527373-527372	514	754	0.68	561	754	0.74	0.68	0.74	360	754	0.48	358	754	0.47	0.48	0.47
		0298ja	0298	Arnos Grove - Potters Bar Station	537081-537078	56	261	0.22	80	261	0.31	0.22	0.31	36	232	0.16	39	232	0.17	0.16	0.17
		0299ja	0299	Muswell Hill - Cockfosters	537081-537078	14	120	0.11	14	120	0.11	0.11	0.11	9	150	0.06	9	150	0.06	0.06	0.06
		0307ia	0307	Barnet Hospital - Brimsdown	527373-527372	92	522	0.18	106	522	0.20	0.18	0.20	154	522	0.30	230	522	0.44	0.30	0.44
		0313ie	0313	External Route 313	537699-537698	47	238	0.20	54	238	0.23	0.20	0.23	51	238	0.21	60	238	0.25	0.21	0.25
		0313ja	0313	Chingford Station - Potters Bar Station	537699-537698	29	180	0.16	27	180	0.15	0.16	0.15	34	180	0.19	39	180	0.22	0.19	0.22
		0317ia	0317	Enfield - Waltham Cross	527171-529165	138	261	0.53	189	261	0.72	0.53	0.72	57	261	0.22	63	261	0.24	0.22	0.24
		0491ia	0491	North Middlesex Hospital - Waltham Cross	529106-529173	37	220	0.17	38	220	0.17	0.17	0.17	164	220	0.74	187	220	0.85	0.74	0.85
		0610ie	0610	External Route 610	537699-537698	26	130	0.20	29	130	0.22	0.20	0.22	35	130	0.27	44	130	0.34	0.27	0.34





# Railplan Results

- Bus demand across East Screenline

Corridor	Direction	Line	Route#	Line Name	Segment	AM Peak									
						LBE DM 2041 AM			LBE DS Reg 19 2041 AM			V/C Comparison			
						Volume	Capacity	V/C	Volume	Capacity	V/C	LBE DM 2041 AM	LBE DS Reg 19 2041 AM		
East	EB	0034ia	0034	Barnet Church - Walthamstow Bus Station	527239-529090	347	653	0.53	506	653	0.78		0.53		0.78
		0313ie	0313	External Route 313	529054-499017	116	238	0.48	180	238	0.75		0.48		0.75
		0313ja	0313	Chingford Station - Potters Bar Station	529054-499017	93	180	0.52	144	180	0.80		0.52		0.80
		0444ia	0444	Turnpike Lane Bus Station - Chingford	527239-529090	240	300	0.80	284	300	0.95		0.80		0.95
	WB	0034ja	0034	Barnet Church - Walthamstow Bus Station	529090-527239	374	653	0.57	340	653	0.52		0.57		0.52
		0313ia	0313	Chingford Station - Potters Bar Station	499017-529054	154	180	0.86	139	180	0.77		0.86		0.77
		0313je	0313	External Route 313	499017-529054	204	260	0.78	183	260	0.70		0.78		0.70
		0313ke	0313	External Route 313	499017-529054	26	22	1.20	25	22	1.17		1.20		1.17
		0444ja	0444	Turnpike Lane Bus Station - Chingford	529090-527239	232	300	0.77	212	300	0.71		0.77		0.71

PM Peak													
LBE DM 2041 PM			LBE DS Reg 19 2041 PM			V/C Comparison							
Volume	Capacity	V/C	Volume	Capacity	V/C	LBE DM 2041 PM	LBE DS Reg 19 2041 PM						
377	653	0.58	370	653	0.57		0.58		0.57				
175	238	0.74	176	238	0.74		0.74		0.74				
142	180	0.79	142	180	0.79		0.79		0.79				
232	300	0.77	214	300	0.71		0.77		0.71				
262	653	0.40	360	653	0.55		0.40		0.55				
101	180	0.56	123	180	0.68		0.56		0.68				
133	260	0.51	162	260	0.62		0.51		0.62				
20	22	0.91	23	22	1.06		0.91		1.06				
166	300	0.55	202	300	0.67		0.55		0.67				

- Bus demand across North Screenline

Corridor	Direction	Line	Route#	Line Name	Segment	AM Peak									
						LBE DM 2041 AM			LBE DS Reg 19 2041 AM			V/C Comparison			
						Volume	Capacity	V/C	Volume	Capacity	V/C	LBE DM 2041 AM	LBE DS Reg 19 2041 AM		
North	NB	0217ja	0217	Turnpike Lane Bus Station - Waltham Cross	527485-529175	77	319	0.24	96	319	0.30		0.24		0.30
		0279ja	0279	Manor House - Waltham Cross	527485-529175	55	667	0.08	65	667	0.10		0.08		0.10
		0298ia	0298	Arnos Grove - Potters Bar Station	539004-619130	74	261	0.28	93	261	0.36		0.28		0.36
		0313ia	0313	Chingford Station - Potters Bar Station	539023-539013	35	180	0.20	58	180	0.32		0.20		0.32
		0313je	0313	External Route 313	539023-539013	54	260	0.21	91	260	0.35		0.21		0.35
		0313ke	0313	External Route 313	539023-539013	8	22	0.37	14	22	0.62		0.37		0.62
		0317ja	0317	Enfield - Waltham Cross	527485-529175	59	261	0.23	76	261	0.29		0.23		0.29
		0327ja	0327	Waltham Cross Circular via Elsing Estate and Turkey Street	527485-529175	1	92	0.01	1	92	0.01		0.01		0.01
		0491ja	0491	North Middlesex Hospital - Waltham Cross	527485-529175	23	220	0.11	23	220	0.10		0.11		0.10
		0610ke	0610	External Route 610	539023-539013	9	87	0.10	16	87	0.19		0.10		0.19
North	SB	0217ia	0217	Turnpike Lane Bus Station - Waltham Cross	529175-527485	42	319	0.13	35	319	0.11		0.13		0.11
		0279ia	0279	Manor House - Waltham Cross	529175-527485	53	754	0.07	46	754	0.06		0.07		0.06
		0298ja	0298	Arnos Grove - Potters Bar Station	619130-539004	23	261	0.09	24	261	0.09		0.09		0.09
		0313ie	0313	External Route 313	539013-539023	43	238	0.18	37	238	0.16		0.18		0.16
		0313ja	0313	Chingford Station - Potters Bar Station	539013-539023	35	180	0.20	31	180	0.17		0.20		0.17
		0317ia	0317	Enfield - Waltham Cross	529175-527485	33	261	0.13	28	261	0.11		0.13		0.11
		0327ia	0327	Waltham Cross Circular via Elsing Estate and Turkey Street	529175-527485	6	73	0.09	6	73	0.08		0.09		0.08
		0491ia	0491	North Middlesex Hospital - Waltham Cross	529175-527485	90	220	0.41	109	220	0.50		0.41		0.50
		0610ie	0610	External Route 610	539013-539023	28	130	0.21	23	130	0.18		0.21		0.18

PM Peak													
LBE DM 2041 PM			LBE DS Reg 19 2041 PM			V/C Comparison							
Volume	Capacity	V/C	Volume	Capacity	V/C	LBE DM 2041 PM	LBE DS Reg 19 2041 PM						
34	377	0.09	32	377	0.08		0.09		0.08				
14	609	0.02	14	609	0.02		0.02		0.02				
29	232	0.13	30	232	0.13		0.13		0.13				
24	180	0.14	25	180	0.14		0.14		0.14				
41	260	0.16	42	260	0.16		0.16		0.16				
6	22	0.28	6	22	0.28		0.28		0.28				
23	261	0.09	22	261	0.08		0.09		0.08				
0	73	0.01	0	73	0.01		0.01		0.01				
56	220	0.25	70	220	0.32		0.25		0.32				
5	87	0.06	6	87	0.07		0.06		0.07				
118	435	0.27	139	435	0.32		0.27		0.32				
128	754	0.17	137	754	0.18		0.17		0.18				
27	232	0.12	30	232	0.13		0.12		0.13				
49	238	0.21	61	238	0.25		0.21		0.25				
39	180	0.22	47	180	0.26		0.22		0.26				
69	261	0.26	81	261	0.31		0.26		0.31				
24	73	0.33	24	73	0.33		0.33		0.33				
14	220	0.06	14	220	0.06		0.06		0.06				
42	130	0.32	55	130	0.42		0.32		0.42				



# Railplan Results

- Bus demand across South Screenline

Corridor	Direction	Line	Route#	Line Name	Segment	AM Peak						PM Peak									
						LBE DM 2041 AM			LBE DS Reg 19 2041 AM			V/C Comparison		LBE DM 2041 PM			LBE DS Reg 19 2041 PM			V/C Comparison	
						Volume	Capacity	V/C	Volume	Capacity	V/C	LBE DM 2041 AM	LBE DS Reg 19 2041 AM	Volume	Capacity	V/C	Volume	Capacity	V/C	LBE DM 2041 PM	LBE DS Reg 19 2041 PM
NB		00W4ja	00W4	Oakthorpe Park - Tottenham Hale Bus Station	517456-537390	82	240	0.34	78	240	0.33	0.34	0.33	160	240	0.67	169	240	0.70	0.67	0.70
		0102ja	0102	Brent Cross Bus Station - Edmonton Green Station	537130-539158	259	653	0.40	254	653	0.39	0.40	0.39	236	653	0.36	261	653	0.40	0.36	0.40
		0121ja	0121	Enfield Island Village - Turnpike Lane Bus Station	517442-539170	105	522	0.20	97	522	0.19	0.20	0.19	246	522	0.47	268	522	0.51	0.47	0.51
		0141ja	0141	London Bridge Bus Station - Palmers Green North Circular Road	517442-539170	80	667	0.12	77	667	0.12	0.12	0.12	319	754	0.42	332	754	0.44	0.42	0.44
		0144ia	0144	Edmonton Green Station - Muswell Hill	507125-539184	142	696	0.20	137	696	0.20	0.20	0.20	140	696	0.20	146	696	0.21	0.20	0.21
		0149ja	0149	Edmonton Green Station - London Bridge Bus Station	507464-529109	218	841	0.26	248	841	0.29	0.26	0.29	442	958	0.46	525	958	0.55	0.46	0.55
		0184ia	0184	Barnet Chesterfield Road - Turnpike Lane Bus Station	537130-539158	50	367	0.14	47	367	0.13	0.14	0.13	39	403	0.10	39	403	0.10	0.10	0.10
		0192ja	0192	Enfield - Tottenham Hale Bus Station	507486-527235	160	255	0.63	253	255	0.99	0.63	0.99	252	285	0.89	270	285	0.95	0.89	0.95
		0217ja	0217	Turnpike Lane Bus Station - Waltham Cross	507125-539184	158	319	0.50	155	319	0.49	0.50	0.49	271	377	0.72	290	377	0.77	0.72	0.77
		0231ja	0231	Enfield Chase - Turnpike Lane Bus Station	507125-539184	156	348	0.45	155	348	0.45	0.45	0.45	212	319	0.66	227	319	0.71	0.66	0.71
		0232ja	0232	St Raphaels North - Turnpike Lane Bus Station	517442-539170	85	238	0.36	81	238	0.34	0.36	0.34	172	275	0.62	179	275	0.65	0.62	0.65
		0259ja	0259	Edmonton Green Station - Kings Cross	507464-529109	120	522	0.23	135	522	0.26	0.23	0.26	235	522	0.45	278	522	0.53	0.45	0.53
		0279ja	0279	Manor House - Waltham Cross	507464-529109	286	667	0.43	294	667	0.44	0.43	0.44	400	609	0.66	447	609	0.73	0.66	0.73
		0299ia	0299	Muswell Hill - Cockfosters	537130-539158	17	120	0.14	15	120	0.12	0.14	0.12	27	150	0.18	28	150	0.19	0.18	0.19
		0318ja	0318	North Middlesex Hospital - Stamford Hill	509123-539251	8	195	0.04	8	195	0.04	0.04	0.04	4	180	0.02	5	180	0.03	0.02	0.03
		0329ja	0329	Enfield - Turnpike Lane Bus Station	517442-539170	227	638	0.36	218	638	0.34	0.36	0.34	682	783	0.87	699	783	0.89	0.87	0.89
		0341ja	0341	Waterloo - Angel Road Superstores	507486-527235	31	464	0.07	124	464	0.27	0.07	0.27	97	464	0.21	146	464	0.31	0.21	0.31
		0349ja	0349	Ponders End Bus Garage - Stamford Hill	507464-529109	176	464	0.38	184	464	0.40	0.38	0.40	282	464	0.61	319	464	0.69	0.61	0.69
	0382ja	0382	Southgate Station - Millbrook Park	537153-537037	142	200	0.71	139	200	0.70	0.71	0.70	82	183	0.45	86	183	0.47	0.45	0.47	
	0444ia	0444	Turnpike Lane Bus Station - Chingford	507125-539184	74	300	0.25	72	300	0.24	0.25	0.24	97	300	0.32	100	300	0.33	0.32	0.33	
South		00W4ia	00W4	Oakthorpe Park - Tottenham Hale Bus Station	537390-517456	203	255	0.79	208	255	0.82	0.79	0.82	105	240	0.44	105	240	0.44	0.44	0.44
	0102ia	0102	Brent Cross Bus Station - Edmonton Green Station	539158-537130	469	653	0.72	542	653	0.83	0.72	0.83	237	653	0.36	245	653	0.38	0.36	0.38	
	0121ia	0121	Enfield Island Village - Turnpike Lane Bus Station	539170-517442	210	522	0.40	218	522	0.42	0.40	0.42	83	522	0.16	82	522	0.16	0.16	0.16	
	0141ia	0141	London Bridge Bus Station - Palmers Green North Circular Road	539170-517442	253	754	0.34	265	754	0.35	0.34	0.35	95	783	0.12	95	783	0.12	0.12	0.12	
	0144ja	0144	Edmonton Green Station - Muswell Hill	539184-507125	199	696	0.29	213	696	0.31	0.29	0.31	133	696	0.19	133	696	0.19	0.19	0.19	
	0149ia	0149	Edmonton Green Station - London Bridge Bus Station	529109-507464	360	987	0.37	500	987	0.51	0.37	0.51	190	754	0.25	231	754	0.31	0.25	0.31	
	0184ja	0184	Barnet Chesterfield Road - Turnpike Lane Bus Station	539158-537130	49	385	0.13	51	385	0.13	0.13	0.13	34	385	0.09	32	385	0.08	0.09	0.08	
	0192ia	0192	Enfield - Tottenham Hale Bus Station	527235-507486	250	255	0.98	289	255	1.14	0.98	1.14	196	270	0.73	268	270	0.99	0.73	0.99	
	0217ia	0217	Turnpike Lane Bus Station - Waltham Cross	539184-507125	163	319	0.51	178	319	0.56	0.51	0.56	172	435	0.39	177	435	0.41	0.39	0.41	
	0231ia	0231	Enfield Chase - Turnpike Lane Bus Station	539184-507125	153	348	0.44	170	348	0.49	0.44	0.49	124	348	0.36	127	348	0.36	0.36	0.36	
	0232ia	0232	St Raphaels North - Turnpike Lane Bus Station	539170-517442	127	275	0.46	133	275	0.48	0.46	0.48	46	275	0.17	46	275	0.17	0.17	0.17	
	0259ia	0259	Edmonton Green Station - Kings Cross	529109-507464	184	551	0.33	257	551	0.47	0.33	0.47	105	464	0.23	126	464	0.27	0.23	0.27	
	0279ia	0279	Manor House - Waltham Cross	529109-507464	440	754	0.58	543	754	0.72	0.58	0.72	340	754	0.45	371	754	0.49	0.45	0.49	
	0299ja	0299	Muswell Hill - Cockfosters	539158-537130	21	120	0.17	22	120	0.18	0.17	0.18	20	150	0.13	20	150	0.13	0.13	0.13	
	0318ia	0318	North Middlesex Hospital - Stamford Hill	539251-509123	5	210	0.03	6	210	0.03	0.03	0.03	4	165	0.02	4	165	0.03	0.02	0.03	
	0329ia	0329	Enfield - Turnpike Lane Bus Station	539170-517442	527	667	0.79	611	667	0.92	0.79	0.92	274	725	0.38	277	725	0.38	0.38	0.38	
	0341ia	0341	Waterloo - Angel Road Superstores	527235-507486	96	493	0.20	156	493	0.32	0.20	0.32	28	435	0.06	104	435	0.24	0.06	0.24	
	0349ia	0349	Ponders End Bus Garage - Stamford Hill	529109-507464	291	551	0.53	366	551	0.66	0.53	0.66	193	493	0.39	216	493	0.44	0.39	0.44	
	0382ia	0382	Southgate Station - Millbrook Park	537037-537153	37	200	0.18	42	200	0.21	0.18	0.21	29	183	0.16	28	183	0.15	0.16	0.15	
	0444ja	0444	Turnpike Lane Bus Station - Chingford	539184-507125	77	300	0.26	83	300	0.28	0.26	0.28	51	300	0.17	51	300	0.17	0.17	0.17	





# Railplan Results

- Bus demand across West Screenline

Corridor Direction	Line	Route#	Line Name	Segment	AM Peak										PM Peak																		
					LBE DM 2041 AM			LBE DS Reg 19 2041 AM			V/C Comparison				LBE DM 2041 PM			LBE DS Reg 19 2041 PM			V/C Comparison												
					Volume	Capacity	V/C	Volume	Capacity	V/C	LBE DM 2041 AM	LBE DS Reg 19 2041 AM					Volume	Capacity	V/C	Volume	Capacity	V/C	LBE DM 2041 PM	LBE DS Reg 19 2041 PM									
EB	0034ia	0034	Barnet Church - Walthamstow Bus Station	537045-537046	526	653	0.81	527	653	0.81	0.81		0.81	394	653	0.60	423	653	0.65	0.60		0.60	326	493	0.66	349	493	0.71	0.66		0.71		
	0125ja	0125	Colindale Station - Winchmore Hill	549112-537055	485	493	0.98	467	493	0.95	0.98		0.95	217	385	0.56	215	385	0.56	0.56		0.56	217	385	0.56	215	385	0.56	0.56		0.56		
	0184ja	0184	Barnet Chesterfield Road - Turnpike Lane Bus Station	537045-537046	375	385	0.97	376	385	0.98	0.97		0.98	133	275	0.49	137	275	0.50	0.49		0.50	157	312	0.50	161	312	0.52	0.50		0.52		
	0232ia	0232	St Raphaels North - Turnpike Lane Bus Station	537045-537046	194	275	0.71	192	275	0.70	0.71		0.70	12	232	0.05	13	232	0.05	0.05		0.05	2	232	0.01	2	232	0.01	0.01		0.01		
	0251ja	0251	Arnos Grove - Edgware Bus Station	537045-537046	269	293	0.92	267	293	0.91	0.92		0.91	421	522	0.81	446	522	0.85	0.81		0.85	84	183	0.46	83	183	0.45	0.46		0.45		
	0298ia	0298	Arnos Grove - Potters Bar Station	537177-537234	16	261	0.06	15	261	0.06	0.06		0.06	17	183	0.09	19	183	0.11	0.09		0.11	53	133	0.39	55	133	0.41	0.39		0.41		
	0298ja	0298	Arnos Grove - Potters Bar Station	537045-537046	2	261	0.01	2	261	0.01	0.01		0.01	-	-	-	-	-	-	-	-	-	-	-	-	-	-	-	-	-	-	-	
	0307ja	0307	Barnet Hospital - Brimsdown	549070-548046	402	522	0.77	383	522	0.73	0.77		0.73	435	653	0.67	445	653	0.68	0.67		0.68	431	522	0.83	427	522	0.82	0.83		0.82		
	0382ia	0382	Southgate Station - Millbrook Park	537045-537046	185	200	0.93	187	200	0.93	0.93		0.93	293	403	0.73	297	403	0.74	0.73		0.74	158	275	0.58	159	275	0.58	0.58		0.58		
	0382ja	0382	Southgate Station - Millbrook Park	549112-537055	64	200	0.32	63	200	0.31	0.32		0.31	226	330	0.68	226	330	0.69	0.68		0.69	6	232	0.02	6	232	0.03	0.02		0.03		
	0384ia	0384	Barnet - Cockfosters Station	548054-539418	87	133	0.66	88	133	0.66	0.66		0.66	16	232	0.07	16	232	0.07	0.07		0.07	361	522	0.69	360	522	0.69	0.69		0.69		
	0251ia	0251	Arnos Grove - Edgware Bus Station	537045-537046	-	-	-	-	-	-	-		-	122	183	0.66	122	183	0.66	0.66		0.66	51	183	0.28	49	183	0.27	0.28		0.27		
	West	0034ja	0034	Barnet Church - Walthamstow Bus Station	537046-537045	446	653	0.68	515	653	0.79	0.68		0.79	81	150	0.54	81	150	0.54	0.54		0.54	-	-	-	-	-	-	-	-	-	-
0125ia		0125	Colindale Station - Winchmore Hill	537055-549112	372	493	0.75	430	493	0.87	0.75		0.87	-	-	-	-	-	-	-	-	-	-	-	-	-	-	-	-	-	-	-	
0184ia		0184	Barnet Chesterfield Road - Turnpike Lane Bus Station	537046-537045	208	367	0.57	210	367	0.57	0.57		0.57	-	-	-	-	-	-	-	-	-	-	-	-	-	-	-	-	-	-	-	
0232ja		0232	St Raphaels North - Turnpike Lane Bus Station	537046-537045	136	238	0.57	144	238	0.60	0.57		0.60	-	-	-	-	-	-	-	-	-	-	-	-	-	-	-	-	-	-	-	-
0251ia		0251	Arnos Grove - Edgware Bus Station	537046-537045	150	293	0.51	156	293	0.53	0.51		0.53	-	-	-	-	-	-	-	-	-	-	-	-	-	-	-	-	-	-	-	
0298ia		0298	Arnos Grove - Potters Bar Station	537046-537045	5	261	0.02	5	261	0.02	0.02		0.02	-	-	-	-	-	-	-	-	-	-	-	-	-	-	-	-	-	-	-	
0298ja		0298	Arnos Grove - Potters Bar Station	537234-537177	15	261	0.06	18	261	0.07	0.06		0.07	-	-	-	-	-	-	-	-	-	-	-	-	-	-	-	-	-	-	-	
0307ia		0307	Barnet Hospital - Brimsdown	548046-549070	515	522	0.99	559	522	1.07	0.99		1.07	-	-	-	-	-	-	-	-	-	-	-	-	-	-	-	-	-	-	-	
0382ia	0382	Southgate Station - Millbrook Park	537055-549112	48	200	0.24	52	200	0.26	0.24		0.26	-	-	-	-	-	-	-	-	-	-	-	-	-	-	-	-	-	-	-		
0382ja	0382	Southgate Station - Millbrook Park	537046-537045	43	200	0.21	41	200	0.20	0.21		0.20	-	-	-	-	-	-	-	-	-	-	-	-	-	-	-	-	-	-	-		
0384ja	0384	Barnet - Cockfosters Station	539418-548054	15	117	0.12	21	117	0.18	0.12		0.18	-	-	-	-	-	-	-	-	-	-	-	-	-	-	-	-	-	-	-		
0251ja	0251	Arnos Grove - Edgware Bus Station	537046-537045	-	-	-	-	-	-	-		-	-	-	-	-	-	-	-	-	-	-	-	-	-	-	-	-	-	-	-		



# Local Plan Regulation 19 + Beyond Impacts on Public Transport Summary

## Changes in Crowding on Rail Links

- **AM Peak**
  - Grange Park to Winchmore Hill – no crowding to 1-2 standing sq/m
- **PM Peak**
  - Winchmore Hill to Grange Park - no crowding to 1-2 standing sq/m
  - Severn Sisters to White Hart Lane – 1-2 standing sq/m to 2-3 standing sq/m

## Changes in Bus Demand

- **AM Peak**
  - **Over capacity routes**
    - Route 491 NB
    - Route 191 SB
    - Route 313 WB (already over capacity in Future Baseline)
    - Route 192 SB
    - Route 307 WB
- **PM Peak**
  - **Over capacity routes**
    - Route 313 WB