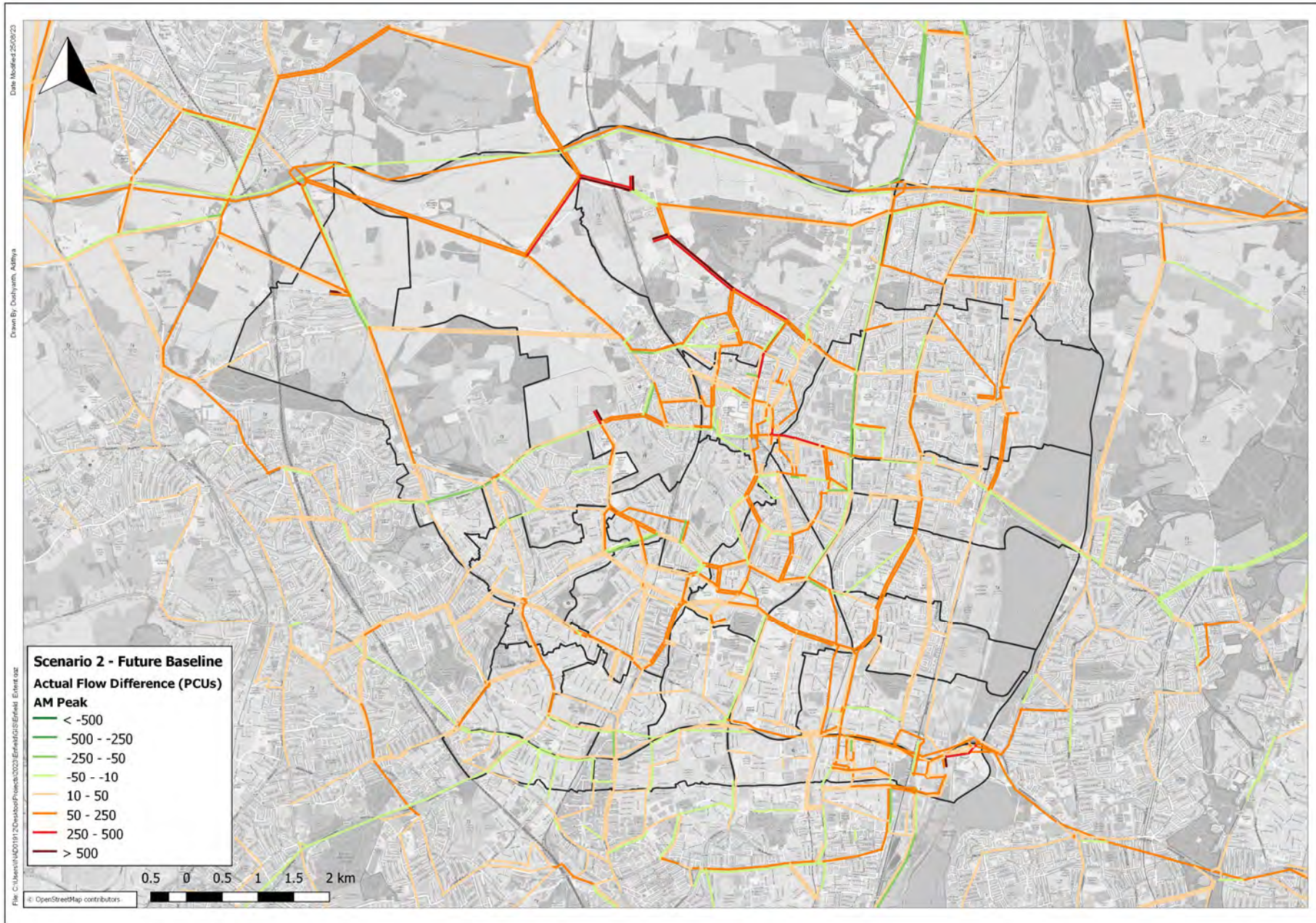


AM Peak LPR19+B -FB Traffic Flows



AM Peak LPR19+B – FB Traffic Flows with Figures



AM Peak Local Plan Regulation 19 + Beyond Traffic Flow Impact Summary

Main changes in traffic flows

- **Crews Hill** – increases on Cattlegate Road/ Theobalds Road up to 550 additional new vehicles
- **Chase Park** – increases on The Ridgeway/ Hadley Road/ Enfield Road up to 225 additional new vehicles
- **Meridian Water** – increases on north circular
- M25 increases – increases up to 150 on M25 eastbound
- Southbury Road eastbound – increases up to 250 vehicles
- A10 – some small increases/ decreases in traffic flow between -100 and 100

AM Peak Link V/C and Delay

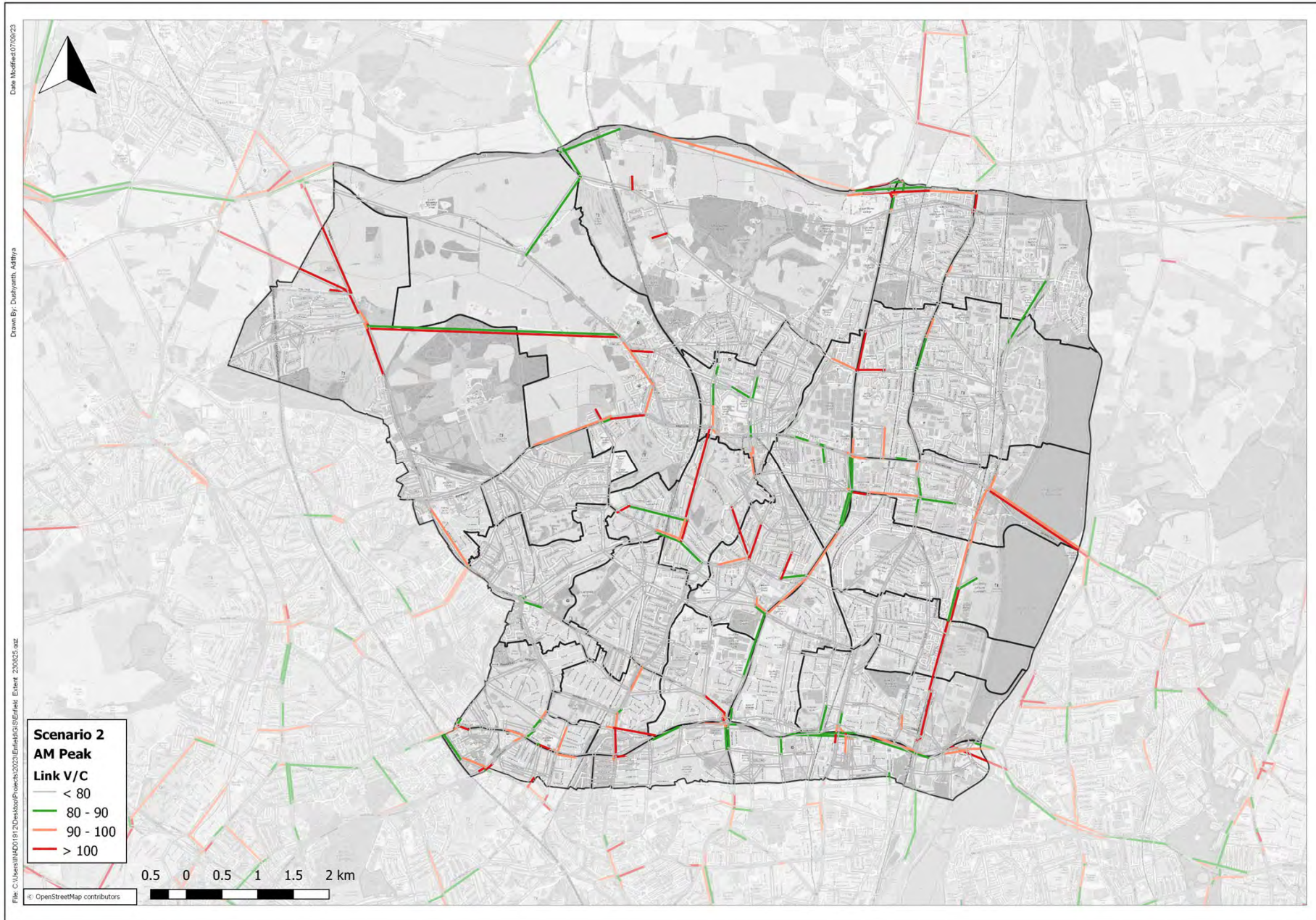
AM Peak Base Link V/C



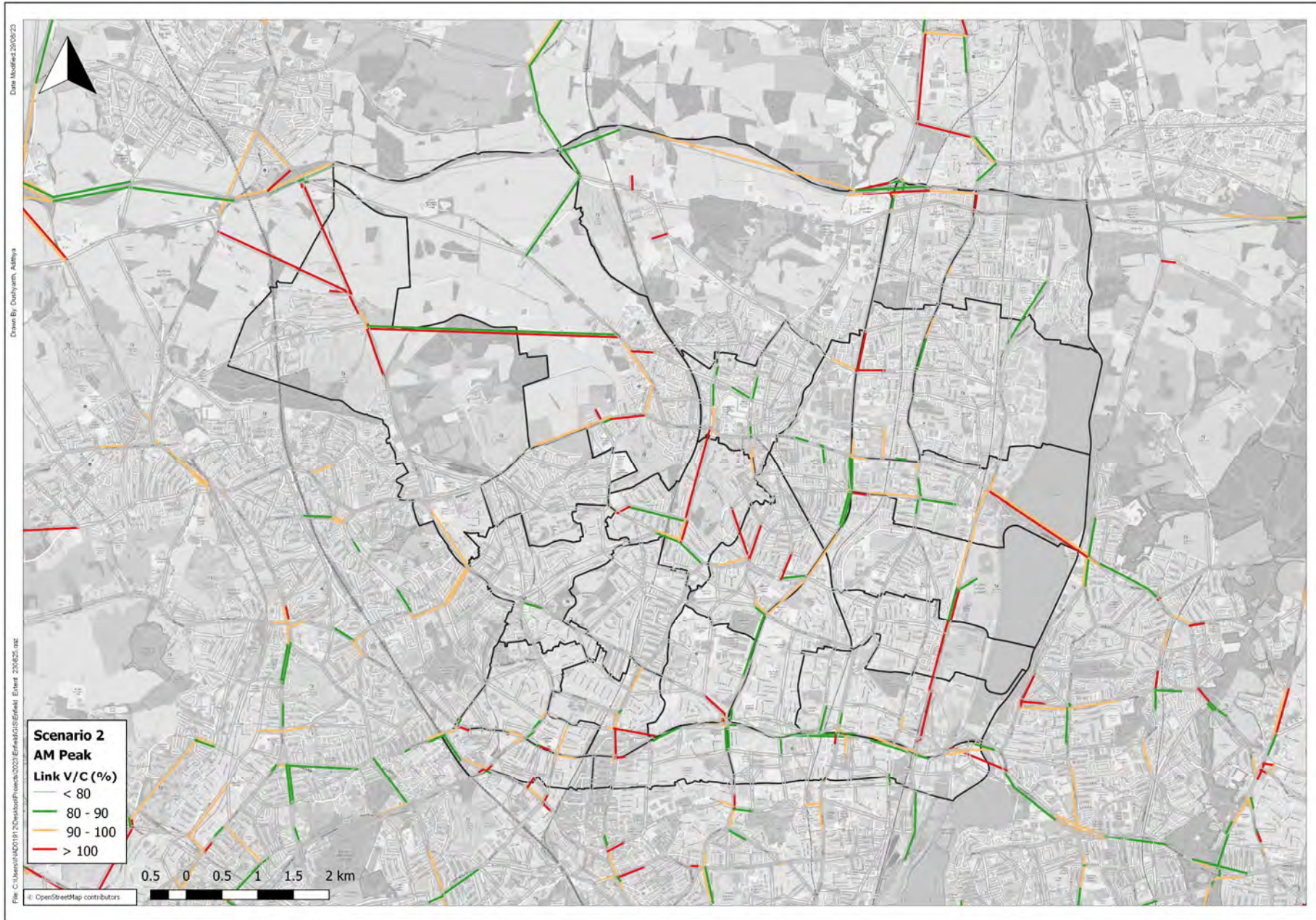
AM Peak Future Baseline Link V/C



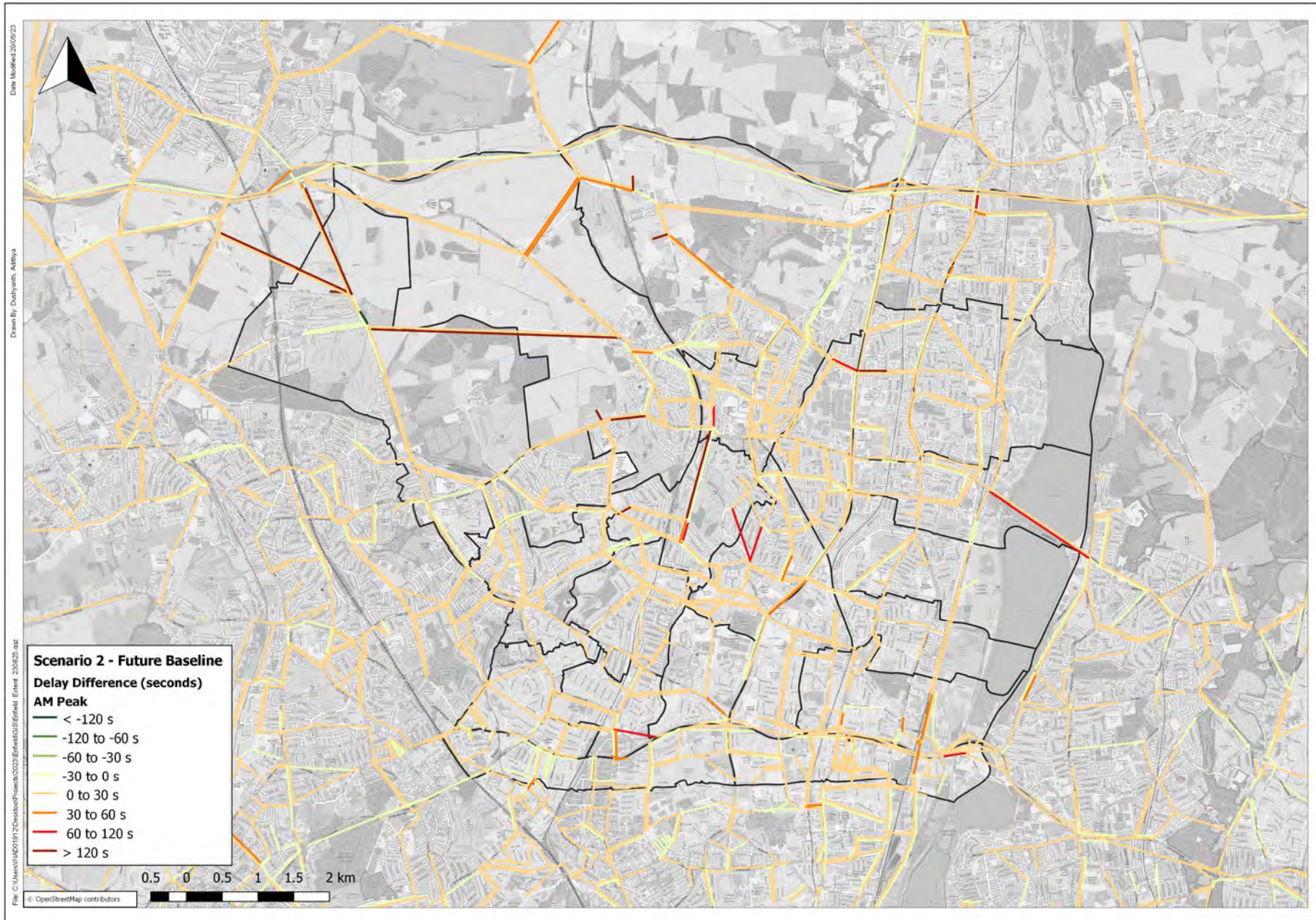
AM Peak Local Plan Regulation 19+Beyond Link V/C



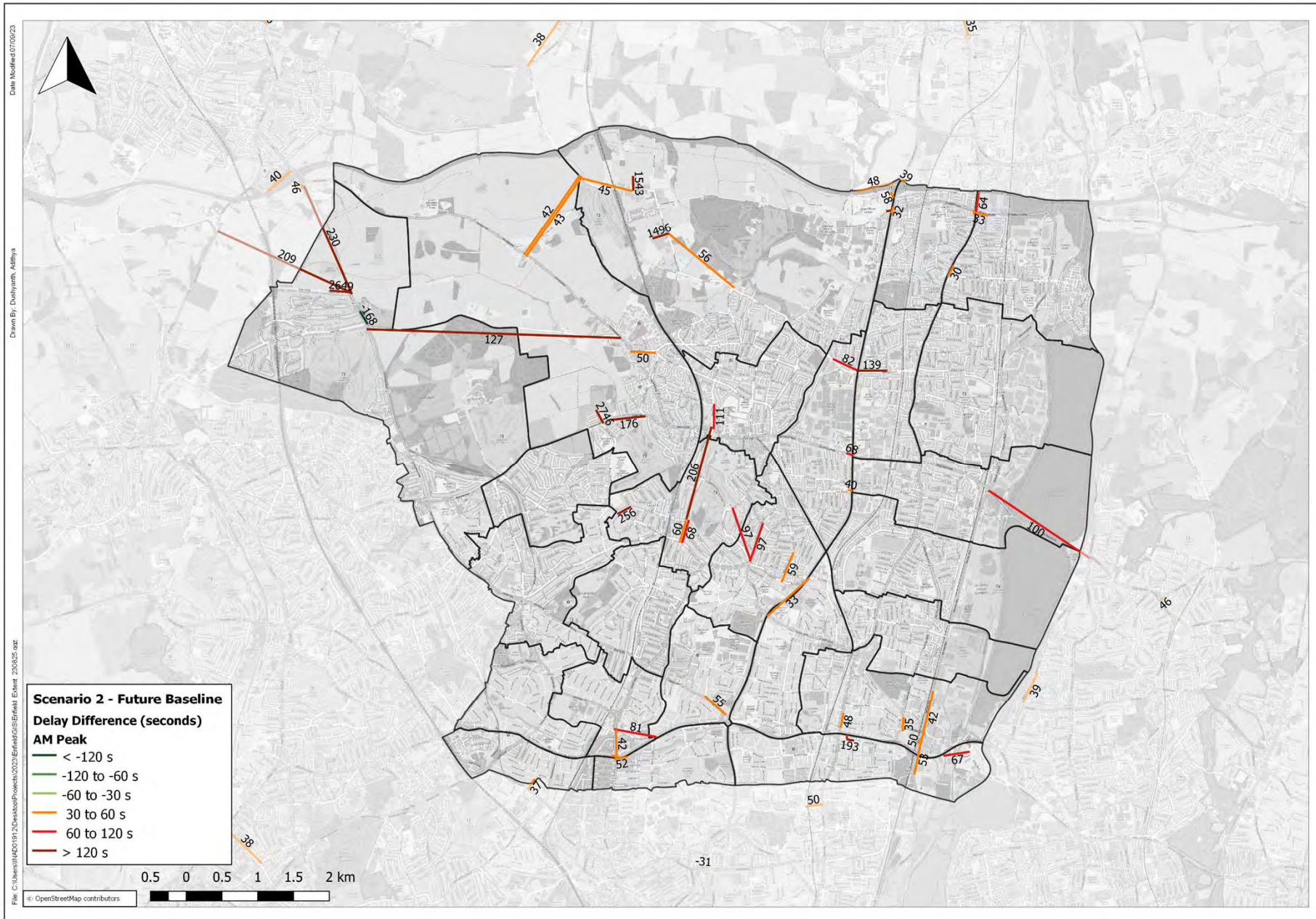
AM Peak Local Plan Regulation 19+Beyond Link V/C



AM Peak Link Delay Increase LPR19+B-FB



AM Peak Link Delay Increase LPR19+B-FB with Figures



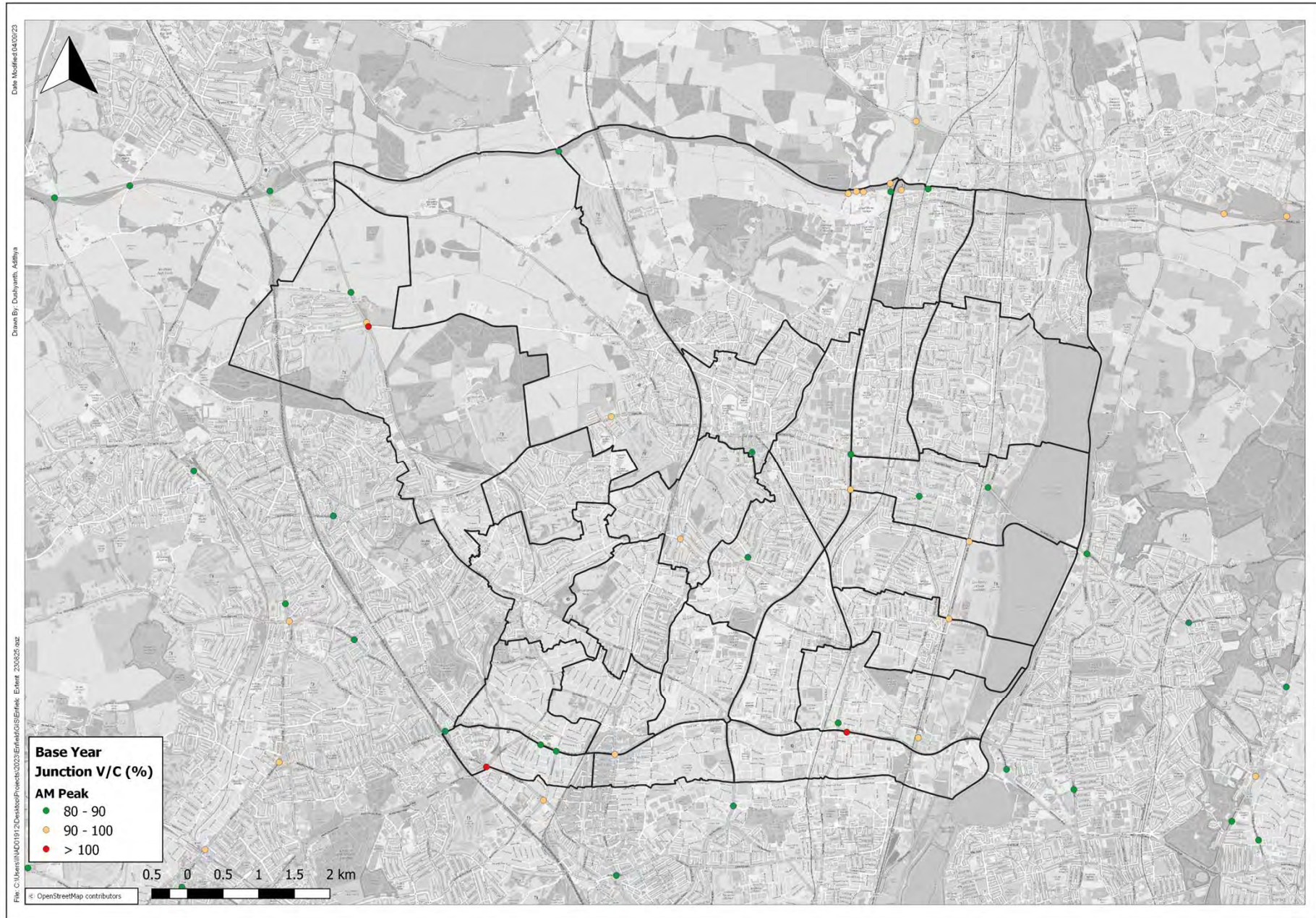
AM Peak Local Plan Regulation 19 + Beyond Link V/C and Delay Impact Summary

Links where V/C increases as a result of the Local Plan include:

- Stagg Hill – delays increase by 230 seconds
- Wagon Road – delays increase by 209 seconds
- Hadley Road – delays increase by 127 seconds
- Enfield Road – delays increase by 176 seconds
- East Lodge Lane – delays increase by 42 seconds
- A105 London Road – delays increase by 206 seconds
- A110 Lee Valley Road – delays increase by 100
- Delays at access points to the network are high for Crews Hill and Chase Park, more detailed work on how these trips access the highway network required

AM Peak Junction V/C and Delay in Vehicle hours

AM Peak Base Junction V/C



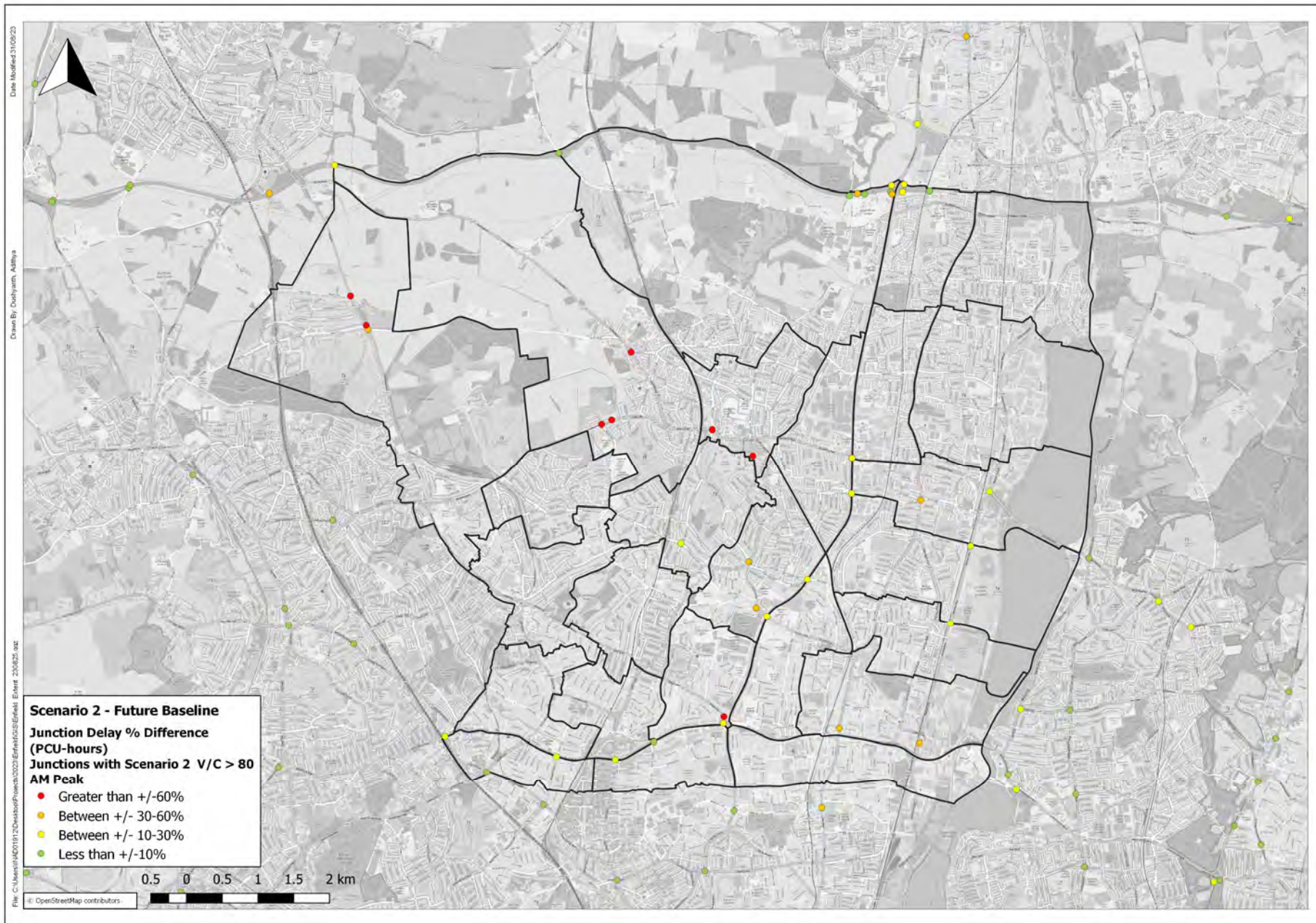
AM Peak Future Baseline Junction V/C



AM Peak Local Plan Reg 19+Beyond Junction V/C



AM Peak Increases in Junction Delay LPR19+B-FB



AM Peak Local Plan Regulation 19 + Beyond Junction Delay Summary

Junctions where V/C increases to over 100 as a result of the Local Plan include:

- Wagon Road/ Stagg Hill
- Hadley Road – Chase Park access
- M25 junction 25
- Windmill Hill/ Bycullah Road
- Ridgeway/ Lavendar Hill

PM Peak Traffic Flows

PM Peak Base Year Traffic Flows



PM Peak Base Year Traffic Flows



PM Peak Future Baseline Traffic Flows



PM Peak Future Baseline Traffic Flow with Figures

