

Stage 3: Typology Library



3.30 | 01 - Rear Extension

Ref: 01-01
One storey rear extension



Terracotta House, Dublin, UK
GKMP Architects

Ref: 01-04
New build behind existing building



Breakspears Road, London, UK
Gruff Architects

The new-build house, within the Brockley Conservation Area, is disguised behind a new 'Victorian' street elevation.

Ref: 01-02
Two-storey rear extension to a Victorian terrace



King's Grove, London, UK
Al-Jawad Pike

Ref: 01-05
Non residential rear extension



Enfield Town Library, London, UK
Shepherd Epstein Hunter

Extension, refurbishment and remodelling of the existing Edwardian library at the heart of the Enfield Town Conservation Area.

Ref: 01-03
One storey rear extension.



Dartmouth Park House, London, UK
Architecture for London

Ref: 01-06
Residential rear extension



Origami House, Ealing, London, UK
KSKa Architects

A unique one bedroom, open-plan family annexe formed of an extraordinary cross laminated timber folded plate 'Origami' structure. An energy efficient dwelling in the rear garden of a listed house.

Key

 Limited	 Transformative
 Medium	

3.31 | 02 - Roof Extension

Ref: 02-01
Two-storey roof extension.



The Rosebery, London, UK
Buckley Gray Yeoman Architects

Conversion of existing industrial building into a hotel comprising a two-storey roof extension.

Ref: 02-04
Conversion of an department store.



The Department Store, London, UK
Squire and Partners

Conversion of an Edwardian department store into office building including a new roof extension.

Ref: 02-02
Extension and retrofit of existing building



The Green House, London, UK
Waugh Thistleton Architects

The office building recycles and refurbishes the existing concrete structure of a disused and derelict 1962 office block with a flexible workspace for up to 25 charities sharing communal facilities and community spaces.

Ref: 02-05
Rooftop and rear extension



St. Paul's House, London, UK
Ash Sakula Architects

The scheme provides a rooftop extension to an early 20th century building, three new-build townhouses and two new restaurants at ground

Ref: 02-03
Extension and conversion of an existing building



Redchurch Corner, London, UK
31/44 Architects

Ref: 02-06
Three storey renovation with roof extension



Nightingale House, London, UK
Roz Barr Architects

Residential conversion with retained commercial at ground floor and roof extension.

Key

 Limited	 Transformative
 Medium	

3.32 | 03 - Side Extension

Ref: 03-01
Three storey corner infill



Lucien Road, London, UK
Harp & Harp

Ref: 03-02
Two storey side extension.



Wapping Pierhead, London, UK
Chris Dyson

Ref: 03-03
Two storey side extension.



Wrong House, London, UK
Matheson Whiteley

Key

 Limited	 Transformative
 Medium	

3.23 | 04 - Streetscape Infill

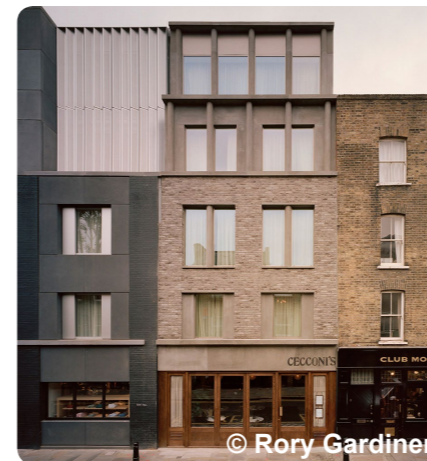
Ref: 04-01
Streetscape infill



Zanara Court, London, UK
Nissen Richards Studio

Four storey streetscape infill residential block with retail at ground level and mews behind.

Ref: 04-02
5 Storey infill



Redchurch Townhouse, London, UK
31/44 Architects

Infill project carefully stitching the recently completed hotel extension to the adjacent Georgian terrace.

Ref: 04-03
Three storey corner infill



Cardozo Road, London, UK
Jack Woolley Architects

A partially subterranean house, designed to give generous accommodation on a small plot adjacent to a street.

3.34 | 05 - Corner Infill

Ref: 05-01
Two houses on a former corner gap site.



© David Grandorge

Stapleton Hall Road, London, UK
Stephen Taylor Architects

Ref: 05-04
Corner / infill development on an estate



© Morley von Sternberg

Perry Mead, London, UK
Peter Barber Architects

Apartment block of eight units on a prominent corner plot.

Ref: 05-02
Three storey corner infill



© Ståle Eriksen

Caudale, London, UK
Mae

Bookend infill providing a mix of townhouses and apartments.

Ref: 05-05
Corner infill on brownfield site



Cowleaze Road, London, UK
Haworth Tompkins

Mixed tenure block on a brownfield site providing 26 new homes.

Ref: 05-03
Three storey corner infill



© Rory Gardiner

Corner House, London, UK
31/44 Architects

Ref: 05-06
Corner infill on urban site



Turnmills, London, UK
Piercy & Co

Commerical block providing office and retail space in a central location.

Key

 Limited	 Transformative
 Medium	

3.35 | 06 - Backland Infill

Ref: 06-01
Two-storey house, back garden infill.



Pankhurst Mews, London, UK
Nissen Richards Studio

Ref: 06-04
2-3 storey backland house



Park House, London, UK
31/44 Architects

Formed of a series of brick volumes set on the centre of a neglected backland site.

Ref: 06-02
Backland infill that is adjacent to a street



Bayford Mews, London, UK
pH+

Part three-part four storey residential infill with commercial unit at ground floor.

Ref: 06-05
Three storey corner infill



Ott's Yard, London, UK
vPPR

Two new triangular houses with green roofs on a site located at the centre of a residential block, surrounded by 23 party walls and accessed via a long narrow passageway.

Ref: 06-03
E



Anson Road, London, UK
Emrys Architects

The scheme comprises eight one-bedroom duplexes in the back garden of a large mansion block.

Key
Limited
Medium
Transformative

3.36 | 07 - Mews

Ref: 07-01
Terrace of four houses on backland site.



© Mark Hadden

Dujardin Mews, London, UK
Karakusevic Carson Architects

Mix of houses, maisonettes and apartments arranged in two terraces. The project is built on a rectangular plot of remediated land next to the Oasis Academy School. Houses have sheltered first floor terraces facing south and creating a layout where no habitable rooms overlook the neighbouring school.

Ref: 07-04
Three storey corner infill



© Morley von Sternberg

North Street, London, UK
Peter Barber Architects

Built on the site of a strip of grass separating two roads, the scheme comprises 14 new homes each with its own front door.

Ref:07-02
Estate infill



© Matthew Westgate

Dover Court, London, UK
Pollard Thomas Edwards

The project includes improvements to the open spaces, pedestrian routes, play provision and recycling/waste organisation on the estate.

Ref: 07-05
Dual aspect single-storey dwellings



© Edmund Sumner

Ravens Way, London, UK
Bell Phillips Architects

Dual aspect single-storey dwellings on former garage site providing homes for the over 60's.

Ref: 07-03
Estate infill



© Morley von Sternberg

Beveridge Mews, London, UK
Peter Barber Architects

Row of 8 terraced houses and a new community garden located within an existing estate.

Ref: 07-06
Mews



© Morley von Sternberg

Moray Mews, London, UK
Peter Barber Architects

Terrace of dual aspect courtyard houses replacing a block of derelict workshops and a patch of scrubland. The scheme alternates between two and one-and-a-half storeys to minimise impact on outlook from the neighbouring Victorian houses.

Key

 Limited	 Transformative
 Medium	

3.37 | 08 - Cluster

Ref: 08-01
Five houses clustered behind terraces.



Spencer Courtyard, London, UK
kennedytwaddle

Five new courtyard style houses have been constructed in a former timber yard tucked behind terraces.

Ref: 08-04
Three live/work houses



Forest Mews, London, UK
Stolon Studio

Three live/work houses arranged around a multi-functional shared outdoor courtyard.

Ref: 08-02
Cluster behind houses



Hedge Hill, London, UK
Peter Barber Architects

Cluster of three houses forming a shared courtyard on a former garage site.

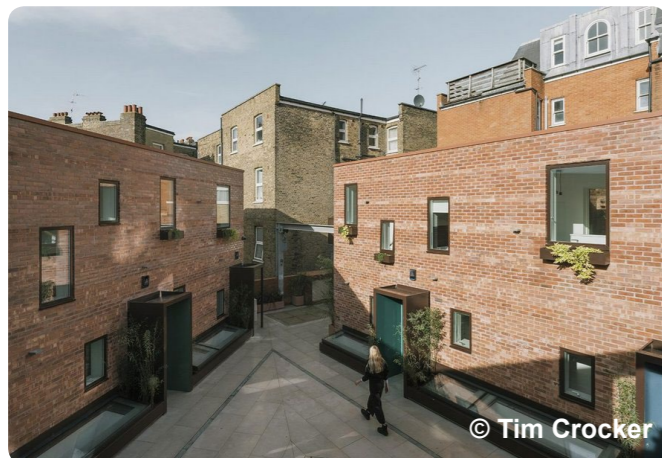
Ref: 08-05
Three storey corner infill



The Old Dairy, London, UK
Studio Woodroffe Papa

The triangular site lies within the Bloomsbury Conservation Area and is bounded by Grade II listed housing and St. Georges Gardens. The scheme was designed to not impede existing views to the park from adjacent properties, nor adversely affect the qualities of the garden spaces through its imposition.

Ref: 08-03
Cluster of eight homes behind existing terraces



Penrose Mews, London, UK
Stolon Studio

The development includes eight 3 to 4 bedroom mews houses and a gatehouse planned around a central courtyard. Accommodation is arranged over three floors with the primary living space set in the basement below the entrance courtyard.

Key

 Limited	 Transformative
 Medium	

3.38 | 09 - Terrace

Ref: 09-01
Three storey corner infill



Ordnance Road, London, UK
Peter Barber Architects

This terrace of three-storey townhouses creates a new backdrop to a busy street in the London Borough of Enfield. Behind it lie four single story courtyard houses which front onto a newly created mews.

Ref: 09-04
Terrace of four houses on backland site.



Church Walk, London, UK
Mikail Riches

Ref: 09-02
Three-storey terrace houses on garage site.



Marston Way, London, UK
Stitch

Ref: 09-03
Terraced townhouses within wider scheme



South Gardens, London, UK
Maccreeanor Lavington

The scheme comprises a mix of townhouses, mansion blocks and a tower each with their own garden, terrace or balcony amid green spaces.

Key

Yellow square	Limited	Orange square	Transformative
Orange square	Medium		

3.39 | 10 - Mansion Block

Ref: 10-01
7 storey mansion block



South Gardens, London, UK
Maccreeor Lavington

The scheme comprises a mix of townhouses, mansion blocks and a tower each with their own garden, terrace or balcony amid green spaces.

Ref: 10-04
Continuous series of mansion blocks



Chobham Manor, London, UK
Haworth Tompkins

The scheme comprises a series of articulated mansion blocks forming a continuous terrace that follows the edge of the park.

Ref: 10-02
Smaller mansion block style building



Greyfort House, London, UK
OB Architecture

Apartment block of eight units on a prominent corner plot.

Ref: 10-05
Central mansion block completes courtyard



Frampton Arms, London, UK
Henley Halebrown

The scheme consists of three 5-storey blocks. The middle one is situated symmetrically between two existing linear blocks of flats, allowing visual and physical connections between the new courtyard that the scheme creates and the street.

Ref: 10-03
Corner apartment building and new mews street



Great Eastern Buildings, London, UK
Karakusevic Carson Architects



Ref: 10-06
Park fronting set of mansion blocks



Quadra, London, UK
PRP

The scheme provides a mixture of one and two bedroom apartments for the over-55s. All apartments are either dual or triple aspect.

Key

 Limited	 Transformative
 Medium	

3.40 | 11 - Villa Block

Ref: 11-01
Fish Island villa block



Lanterna, London, UK
Lyndon Goode Architects

Lanterna is a standalone building with four active frontages, sited as a gateway building to Fish Island Village.

Ref: 11-04
Series of blocks overlooking a park



Finsbury Park Villas, London, UK
Sergison Bates Architects

Three new urban villas of varying height arranged around a shared space and treated as a tightly knit cluster and providing forty-four one- to four- bedroom apartments for mixed tenure.

Ref: 11-02
Five storey villa blocks



Suburban housing, Zurich, Switzerland
Sergison Bates Architects

Ref: 11-05
Five storey villa block



Harris House, London, UK
Niall McLaughlin Architects

Ref: 11-03
Six storey villa block



Orwell House
Bell Phillips Architects

Six storey villa block on the brownfield site of a former surface car park within a post-war estate in Hackney.

Ref: 11-06
Four storey infill site



Heatfield Gardens, London, UK
Mikhail Riches

Infill site providing a mix of apartments and maisonettes.

Key

 Limited	 Transformative
 Medium	

3.41 | 12 - Linear Block with Podium

Ref: 12-01
Mixed use large scale regeneration

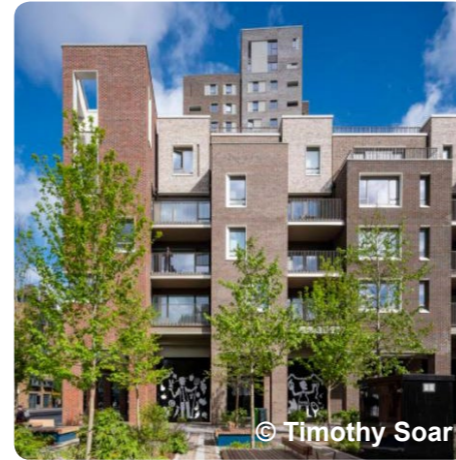


© Philip Vile/Haworth Tompkins

Hallsville Quarter, London, UK
Haworth Tompkins

Mixed-use regeneration scheme with food store at ground level and residential units above podium.

Ref: 12-04
Podium block in a major regeneration scheme



© Timothy Soar

Orchard Gardens, London, UK
Panter Hudspith Architects

Mixed-use regeneration scheme with retail at ground level.

Ref: 12-02
Mixed use large scale regeneration



Lucien Road, London, UK
Harp & Harp

The new Sainsbury's store is 'wrapped' with new residential blocks and a landscaped podium gardens.

Ref: 12-05
Mixed use podium block



© Nick Kane

Tapestry Building, London, UK
Níall McLaughlin Architects

The building incorporates an energy centre, a multi-use games area, a retail / café / restaurant unit, centralised car parking, open market and affordable apartments.

Ref: 12-03
Mixed use large scale regeneration



© Tim Crocker

Porters Edge, London, UK
Maccreeanor Lavington

The scheme accommodates the re-provision of the existing big box retail tenant by creating them a new flagship store within a mixed-use urban block in a dense town-centre setting.

Key

 Limited	 Transformative
 Medium	

3.42 | 13 - Linear Block without Podium

Ref:13-01
Mixed use linear block with terraces behind



Sutherland Road, London, UK
Levitt Bernstein

Apartment blocks and mews houses with communal courtyard.

Ref: 13-04
Large scale regen



Trafalgar Place, London, UK
dRMM

Mixed-use regeneration scheme combining tower, apartments buildings and townhouses.

Ref: 13-02
Linear block with a mix of flat types



Silchester Housing, London, UK
Haworth Tompkins

The scheme comprises residential accommodation, retail uses and community facilities. All the homes are dual aspect.

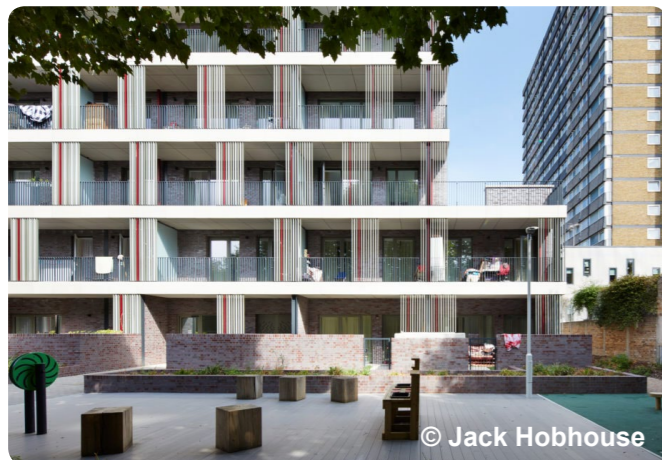
Ref: 13-05
Linear block with rear courtyard



Foundry Mews, London, UK
RCKa

The scheme provides family mews houses, family duplexes and apartments around a south-facing courtyard that encourages neighbourly interaction.

Ref: 13-03
Linear block as part of an estate scheme



Agar Grove (Phase 1), London, UK
Hawkins Brown (lead) with Mae

Passivhaus apartment block part of wider estate regeneration

Ref: 13-06
Large scheme comprising linear blocks



Burridge Gardens, London, UK
Hawkins Brown

Perimeter blocks defined by linear blocks combining maisonettes and apartments.

Key

 Limited	 Transformative
 Medium	

3.44 | 14 - Tower

Ref: 14-01
Tower along a key route



333 Kingsland Road, London, UK
Henley Halebrown

Mixed-use scheme combining a school and a residential tower with retail at ground floor.

Ref: 14-04
Three storey corner infill



Tiger Way, London, UK
Hawkins Brown

Education-led mixed-use scheme, delivering a high-quality new primary school and nursery co-located with residential apartments.

Ref: 14-02
Tower along a key route



Hackney Road, London, UK
Hawkins Brown

Mixed-use scheme providing office space and apartments. The scheme comprises a five storey podium and a five storey lantern tower.

Ref: 14-05
Fourteen storey corner tower



Porters Edge, London, UK
Maccreanor Lavington

The scheme accommodates the re-provision of the existing big box retail tenant by creating them a new flagship store within a mixed-use urban block in a dense town-centre setting.

Ref: 14-03
16 storey tower, part of wider masterplan



South Gardens, London, UK
Maccreanor Lavington

The scheme comprises a mix of townhouses, mansion blocks and a tower each with their own garden, terrace or balcony amid green spaces.

Ref: 14-05
Seventeen storey tower at a key junction



The White Collar Factory, London, UK
Allford Hall Monaghan Morris

A complex of six buildings, which includes offices, studios, incubator space, restaurants and apartments, with a sixteen-storey tower.

Key

 Limited	 Transformative
 Medium	

3.45 | 15 - Industrial - Extension / Infill

Ref: 15-01
Two storey rooftop extension



RCA Sackler Building, London, UK
Haworth Tompkins

The old single story factory has been transformed into a series of new studio spaces under a new roof form. by inserting a new independent steel structure within the existing brick enclosure. This has provided several double height studios along with a new mezzanine level.

Ref: 15-02
Exetensions to existing industrial building



Modular, Roeselare, Belgium
Coussée Goris Huyghe architecten

Energy conscious factory building for a lighting equipment manufacturer.

Ref: 15-03
Roof and side extension



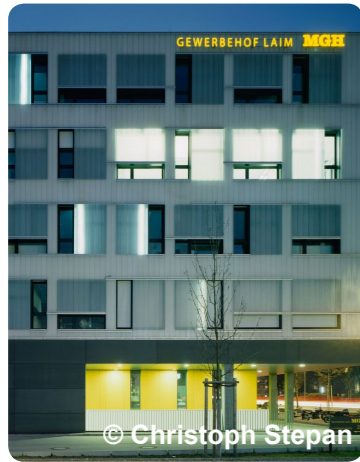
Chart Street, London, UK
Heyne Tillett Steel

Redevelopment of existing building for offices with roof and side extension.

Key
Limited
Medium
Transformative

3.46 | 16 - Stacked Industrial

Ref: 16-01
Five storey bespoke industrial building



Gewerbehof, München, Germany
bogevischs buero

The building offers space for small and medium-sized craft and commercial enterprises accessed through a central aisle.

Ref: 16-04
Multistorey B2-B8 use building



X2, Heathrow, UK
Cornish Architects

X2 is a two storey industrial facility with ancillary offices. Each level has its own service yard area with upper level access via two one way ramps.

Ref: 16-02
Bespoke industrial building



Brunner Innovation Factory, Germany
HENN

Multifunctional building for furniture company combining production, assembly, office and catering areas.

Ref: 16-03
Three storey stacked SME industrial building



Barking Industria, London, UK
Haworth Tompkins

Stacked industrial development providing vehicular access to upper floors by a helical van ramp that will allow tenants to service their businesses directly.

Key

Yellow square	Limited	Orange square	Transformative
Orange square	Medium		

3.47 | 17 - Co-location

Ref: 17-01
Three storey corner infill



Lucien Road, London, UK
Harp & Harp

Mixed-use scheme co-locating light industrial units, retail, workshops and residential.

Ref: 17-02
Three storey corner infill



Lucien Road, London, UK
Harp & Harp

Mixed-use regeneration scheme with flexible workspaces at ground floor.

Ref: 17-03
Mixed use block



Unite & Travis Perkins, London, UK
MAKE

Mixed-use scheme with student rooms above the depot at ground level.

18 - Office Park

Ref: 18-01
Three storey corner infill



Plus X, Brighton, UK
Studio Egret West

BREEAM Excellent innovation hub designed to be the healthiest workplace in the country

Ref: 18-02
Three storey corner infill



Here East, London, UK
Hawkins Brown

Flexible workspaces, studios and innovation hub

Ref: 18-03
Three storey corner infill



R7 King's Cross, London, UK
Morris+Company

Civic-minded office building including a public lobby, cinema, restaurant and bar.

Key

	Limited		Transformative
	Medium		