

Enfield Safeguarding Children Partnership Arrangements

Working together in Enfield to keep Children and Young People safe

June 2019



www.enfield.gov.uk/SafeguardingEnfield

Safeguarding
ENFIELD



Please talk to us

Safeguarding children and young people is everyone's responsibility. As someone who might live, work or study in Enfield you have a role too. If you are worried about someone or yourself, **please talk to us**.

You can call us at any time and you don't have to say who you are. You can get help in any of these ways:

- Ring the Children Multi-Agency Safeguarding Hub (MASH) Team on **020 8379 5555**, Monday to Friday 9.00am to 5.00pm.
- Call the emergency duty team on **020 8379 1000** at night and weekends, and tell them what is happening.
- You can email at: **ChildrensMash@enfield.gov.uk**
- In an emergency – such as when someone is being hurt or shut out of their home – ring the police on 999. You can also ring **ChildLine** on **0800 1111** or visit the **ChildLine website**.

If you don't want to talk to someone you don't know, you can ask an adult that you trust, like a teacher or youth worker or even a friend, to make the phone call for you. When people are working with children they have to follow set procedures, but they will explain to you what they will do and should be able to support you through the process.



ChildLine have launched the '**For Me**' app – the first app to provide counselling for young people via smartphone and other mobile devices. For more information and to download the app for free, follow the **link**.



There is also helpful information on the Safeguarding Enfield website. Go to: **www.enfield.gov.uk/SafeguardingEnfield**



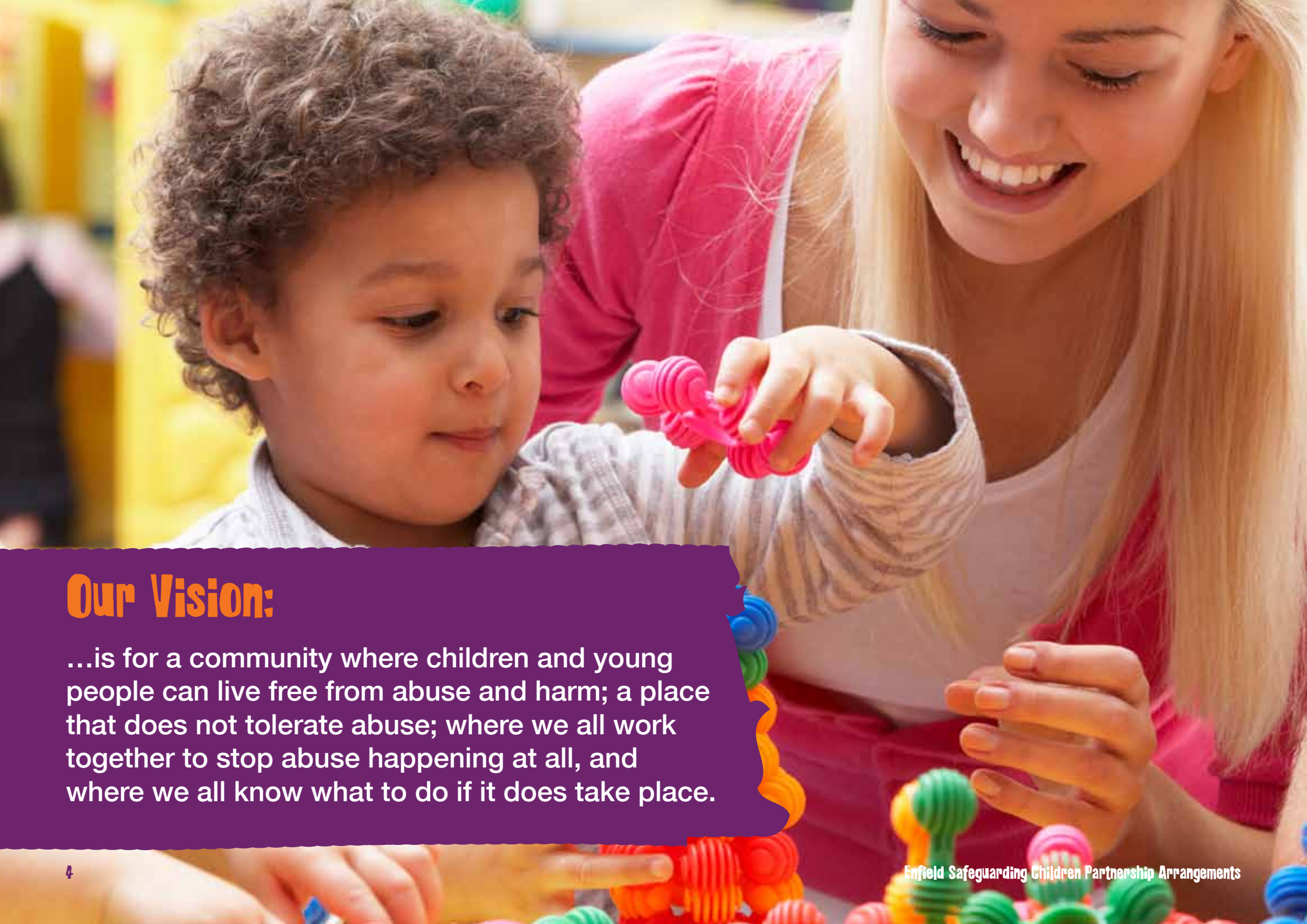
Contents

- 4 **Our Vision**
- 5 **Welcome**
- 6 **About Enfield**
- 7 **Why we are making these changes**
- 8 **What is changing?**
- 9 **How it will work**
- 11 **Activity groups**
- 16 **Working Together**
- 16 **Scrutiny**
- 17 **Resourcing these arrangements**
- 17 **Delegation and Dispute Resolution**
- 18 **Review and Reporting**
- 18 **Year 1 - We will**
- 19 **For further information please contact...**

Appendices

- 20 **Appendix A: Statutory basis**
- 20 **Appendix B: Key points about National Panel and Reviews**
- 21 **Appendix C: Terms of References**
- 27 **Appendix D: Relevant Agencies**





Our Vision:

...is for a community where children and young people can live free from abuse and harm; a place that does not tolerate abuse; where we all work together to stop abuse happening at all, and where we all know what to do if it does take place.

Welcome

Welcome to the Enfield Children and Young People safeguarding arrangements.

These arrangements are our plan for how the three Safeguarding Partners: Enfield Council, Metropolitan Police Service and NHS Enfield Clinical Commissioning Group, will work together, and with relevant agencies (for example schools, health care providers, third sector organisations, Probation, Cafcass), and the Enfield community to keep young people and children safe.

The views and perspectives of young people must be at the heart of our work. They will have an important role in working with us to:

- design these arrangements
- improve and innovate
- check these arrangements are working properly for you.

These new arrangements are required by law and they give us an opportunity to reflect and build on the good work already being done in Enfield. We will use this solid platform from which to remember lessons already learnt, improve what we do, and where it is possible, to think about doing things in new ways.

We are looking forward to delivering this plan together, and want to encourage people who live, work and study in Enfield to help us work towards our ambitious vision for Enfield.



A handwritten signature in white ink that reads "T. Fleming".

Treena Fleming
Detective Chief Superintendent
North Area (Enfield & Haringey) BCU Commander
Metropolitan Police Service



A handwritten signature in white ink that reads "Tony Theodoulou".

Tony Theodoulou
Executive Director – People
Enfield Council



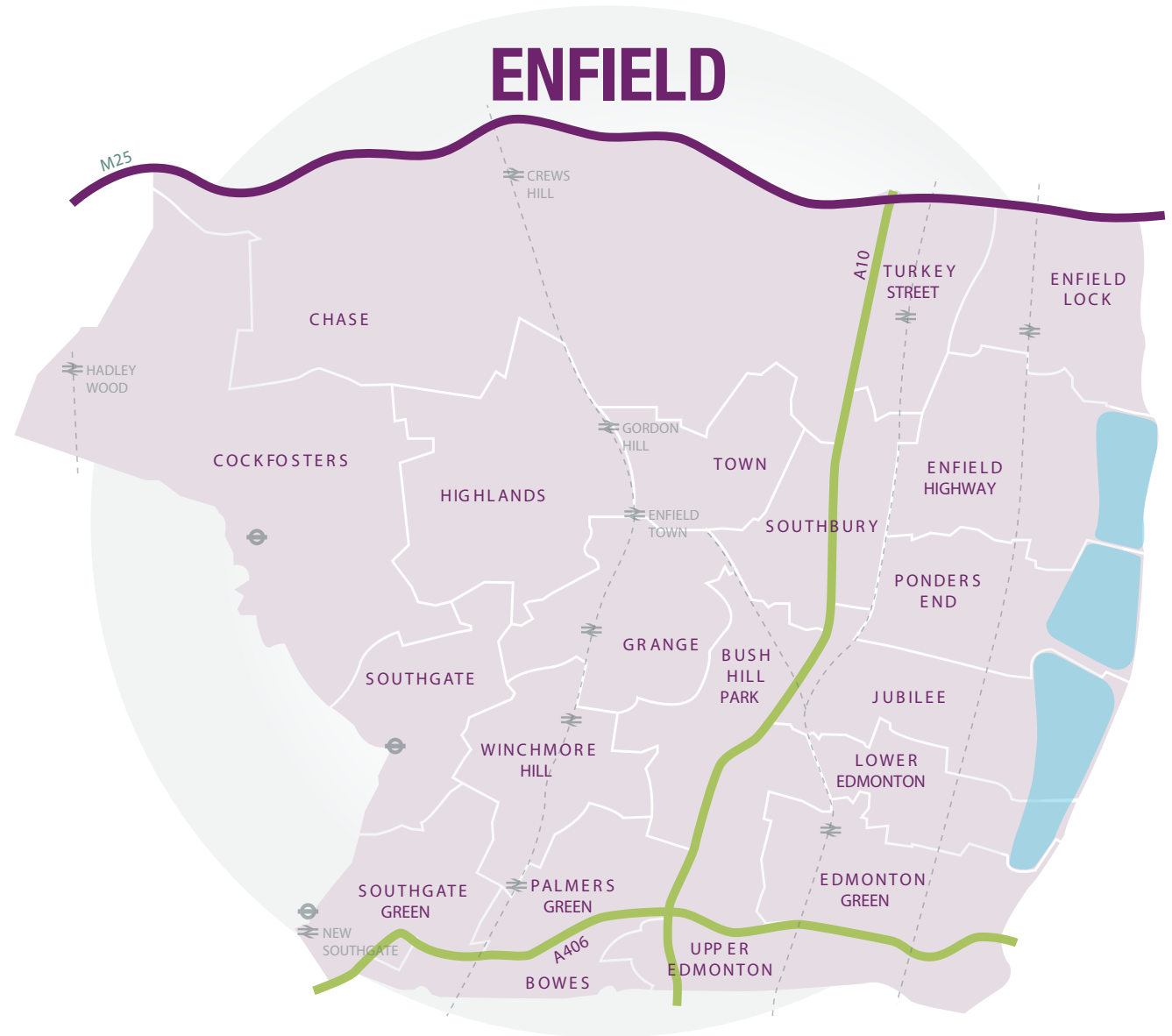
A handwritten signature in white ink that reads "John Wardell".

John Wardell
Chief Operating Officer
pp Aimee Fairbairns
Director of Quality and Clinical Services
NHS Enfield Clinical Commissioning Group

Date: 5th June 2019

About Enfield

- 5th highest population in London with 332,127
- 25% (approximately 84,200) of population under 18
- 40% of Borough designated as Green Belt; with 130 parks and open spaces
- 178 languages or dialects spoken including Turkish, Somali, Polish, Bengali, Albanian and Greek
- 10 out of 21 wards among the 20% most deprived in England
- 97% of schools rated good or outstanding by Ofsted
- 17 Libraries



Source: Various sources from Enfield Council, 2018

Why we are making these changes

In May 2016, a review of Local Safeguarding Children Boards by Alan Wood was published. The review presented its view on the effectiveness of Local Safeguarding Children's Boards and made recommendations on how the arrangements to safeguard children and young people could be improved.

The changes detailed in the Children and Social Work Act 2017 and Working Together 2018 are the government's response to the recommendations.

These laws tell local areas what they must do from the 29th September 2019. The ambition is that these changes will improve the way organisations and communities work together to safeguard children and young people.

The biggest changes are that:

- Local Safeguarding Children Boards (LSCBs), which are set up by local authorities, will be replaced by safeguarding partner arrangements.
- The three safeguarding partners will have a shared responsibility for these arrangements.
- The Local Authority is no longer leading this area of work.

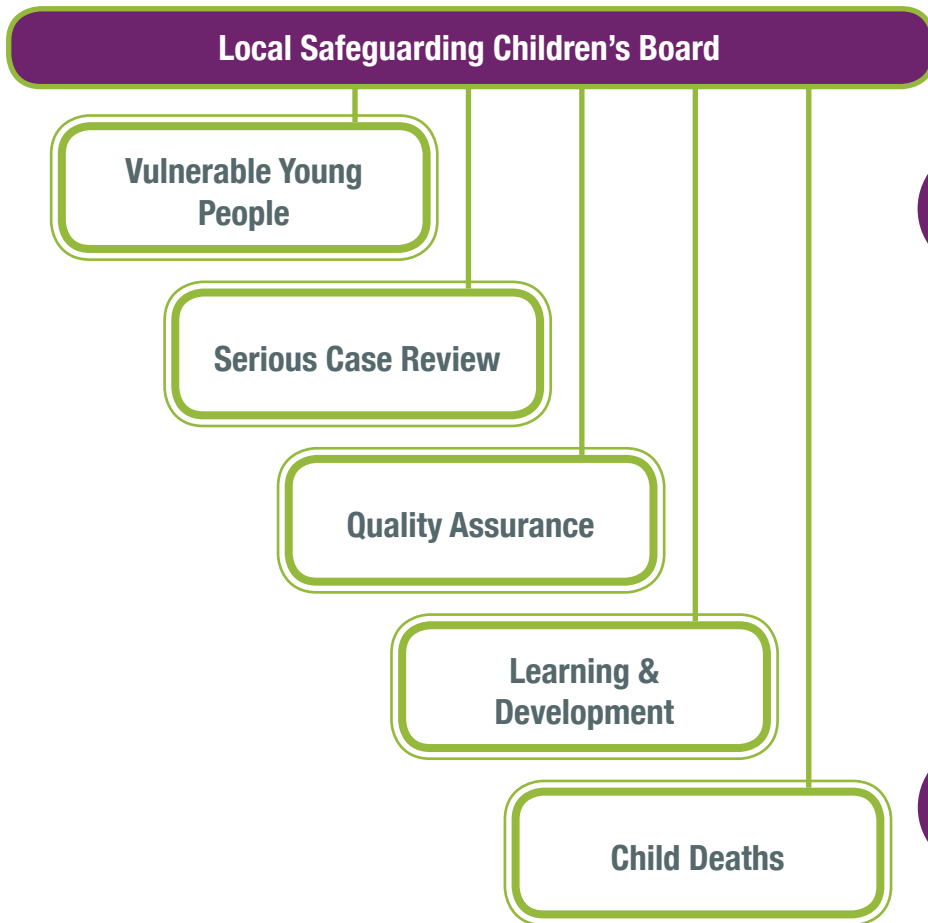
To review the Working Together statutory guidance please go to: www.gov.uk/government/publications/working-together-to-safeguard-children--2 or search for "Working Together to safeguard children".



What is changing?

The Safeguarding Arrangements will transform the Local Safeguarding Children Board organisation from sub-committees that all reported to the Local Safeguarding Children's Board, to a more dynamic Activity Groups structure, where each group will be able to see what other groups are doing, and organise work and resources as needed. This work of the Safeguarding arrangements will be co-ordinated by a Business Unit.

Former arrangements



New arrangements

Enfield Safeguarding Children's Arrangements



How it will work

There are five areas of work, which we believe the arrangements should cover so that we continually innovate, learn, and improve.

These are:

1. Community Awareness Raising – working with Enfield residents to raise the profile of the Safeguarding Children teams, how they can help, and how they can be contacted; as well as what local people can do to keep themselves and their families safe. Adults and Children services, and these arrangements will help us talk about abuse for adults and children together.
2. Developing Insights about how we are doing and new risks that we need to be ready for – through data, intelligence and assurance work.
3. Improving Safeguarding Practice – including the Think Family approach, which encourages services to deal with families as a whole, rather than responding to each problem, or person, separately.
4. Focus on issues affecting Vulnerable Young People, including serious youth violence, criminal and sexual exploitation, and cyber/online abuse.
5. Making sure we review and learn from every Child Death.

These areas will be managed by Activity Groups, who will be led and supported by different safeguarding partners.

Overseeing this work, is an Executive Group, including senior decision makers from the Police, Enfield Council, NHS Enfield Clinical Commissioning Group, and an Independent Scrutineer.

A Partnership meeting will bring together Enfield's wider safeguarding partnership every six months to explore specific themes. These meetings will include the Safeguarding Partners, relevant agencies and members of the community. Representatives from Education, including the Headteachers from Enfield's Primary, Secondary and Special Schools networks will part of this meeting.

These arrangements will work to Enfield's Threshold Guidance. To see this document, please find "Enfield Threshold Document" at: new.enfield.gov.uk/enfieldscb/protocolsandprocedures

The arrangements will be reviewed annually to make sure they are delivering on our vision.



VOICE OF THE CHILD

Children & Young People are the fourth partner and have a critical role in:

- co-producing these arrangements
- supporting developments and innovations
 - working with us to scrutinise

EXECUTIVE GROUP

Meetings: Bi-monthly
Location: Enfield Civic Centre
Chair: Independent Scrutineer
Support: Enfield Council

SAFEGUARDING PARTNERSHIP MEETING

We will ensure that we work with relevant agencies (see Appendix D) with schools, early years and other education organisations, NHS trusts, NHS Primary Care, other health care providers, the voluntary sector, businesses and the Enfield community to keep children and young people safe.

ACTIVITY GROUPS

COMMUNITY AWARENESS RAISING GROUP

Prevent Abuse by:

Raise awareness in Enfield communities about what abuse looks like, how to report it, and what individuals and communities can do.

INSIGHTS GROUP (RISKS, DATA & ASSURANCE)

Prevent Abuse and improve services by:

Horizon scanning data/intelligence to identify current and future risks to the effectiveness of the arrangements.

PRACTICE IMPROVEMENT GROUP (POLICY, REVIEWS & LEARNING)

Learning from experience and improve services by:

Effectively reviewing and learning from cases and using this information to improve practice, systems and our arrangements.

VULNERABLE YOUNG PEOPLE GROUP

Protect Children and Young People by:

Ensuring we have focussed actions to prevent abuse against vulnerable young people.

CHILD DEATH OVERVIEW PANEL

Learn from experience and Protect Children and Young People by:

Ensuring we learn from all child deaths, families are supported, safeguarding issues are identified and managed.

ADULTS* & CHILDREN FOCUS

Lead: Lay Person
Support: Enfield Council, Safeguarding Partnership Team

ADULTS* & CHILDREN FOCUS

Lead: Police
Support: Police

ADULTS* & CHILDREN FOCUS

Lead: Independent Scrutineer
Support: NHS Enfield Clinical Commission Group

CHILDREN FOCUS

Lead: Enfield Council, Community Safety
Support: Enfield Council, Community Safety

CHILDREN FOCUS

Lead: Enfield Council, Public Health
Support: Enfield Council, Public Health

* Adults governance and support provided by the Safeguarding Adults Board.

Activity groups

Key principles

Every time people meet as part of these arrangements, there are a number of principles that must be met:

- Every meeting should help keep children and young people safe
- A child's voice should be heard at every meeting
- Intelligence/Data should support every meeting
- Partners should lead and support a workstream
- Meeting must be efficient and reduce duplication wherever possible.

These apply to the Executive Group and each Activity Group.

Voice of Young People at the heart of our work

One of the most important parts of these new arrangement is the role of children and young people in helping us deliver our vision.

We will use the experience of work in Adults Social Care, in particular the Quality Checkers volunteer programme, and other quality improvement programmes, including: Enfield Parent Champions, and HealthWatch Volunteers.

This is an ambitious piece of work which, in the first year, will involve recruiting and training 8 to 10 young people who will be our Young Scrutineers. Some of the roles being developed include:

- working with the Independent Scrutineer to check that arrangements are working as they should,
- work with us on our communications and social media approaches,
- help us think about the best way to reach or work with young people.



Executive Group

The three safeguarding partners have equal and joint responsibility for these arrangements – Enfield Council, Police and NHS Enfield Clinical Commissioning Group.

The three safeguarding partners develop, manage and review these arrangements through the Leadership Group. The named representation is presented here.

The officers present are senior enough to speak for their agencies, and are able to direct resources towards the various Activity groups and projects as needed.

The Executive Group will also provide strategic direction on how the arrangements will respond to Local, London-wide and National issues as they emerge.

The officers making up the Executive Group are:

Enfield Council

- Ian Davis, Chief Executive
- Tony Theodoulou, Executive Director – People
- Anne Stoker, Director of Children & Families Services

Metropolitan Police Service, North Area (Enfield & Haringey) BCU

- Treena Fleming, Detective Chief Superintendent, North Area BCU Commander
- Tony Kelly, Detective Superintendent – Safeguarding

NHS Enfield Clinical Commissioning Group

- John Wardell, Chief Operating Officer
- Aimee Fairbairns, Director of Quality

Independent Scrutineer

- Geraldine Gavin

Young Person/Safeguarding Scrutineer

Lay person

Safeguarding Children's Partnership meeting

The Safeguarding Children's Partnership meeting is the key mechanism for developing how the safeguarding partners and the relevant agencies will co-operate to safeguard and promote the welfare of children in Enfield, and for ensuring the effectiveness of what they do.

This meeting will be chaired by a safeguarding partner, with the Independent Scrutineer in attendance asking 3 key questions of the agencies present:

- What have we done?
- How well have we done it?
- Is anybody better off?

The outcomes of these questions will inform priorities for the coming six months and highlight information to be presented in the annual report.



Working with the community

We believe working with our community groups and voluntary sector organisations will help to raise awareness about abuse and the work of safeguarding partners. Important information is already available to Enfield residents (Twitter, Facebook, voluntary sector work and the Enfield website), and we want to build on this by developing more face-to-face conversations about safeguarding issues with Enfield residents.

The ambition is to engage volunteers from community groups who can act as ambassadors and work with us to raise awareness. This is building on the excellent work already underway in numerous community groups, and developing a priority area of work for the Safeguarding Adults Board, where a strong Service User group has steered the Safeguarding Adults strategy. This Safeguarding Adults Board sub-group, will evolve into the Community Awareness Raising Activity Group for both Children and Adults. The Group:

- Will need Adults and Children service users or carers to be quorate.
- Will work together to build an abuse awareness raising toolkit.
- Will oversee a project to recruit and train Safeguarding champions from Enfield communities.
- Will engage with local groups to highlight how to they can keep themselves safe, and how they can recognise and report abuse.

This will be the first step in developing a network that can mobilise the community towards our Vision.

The Community Awareness Raising Activity group will be Chaired by an Enfield Resident/Lay person, and will be supported by Enfield Council.

Practice Improvements

In these arrangements, the Safeguarding Practice Improvement Activity Group, will lead on the work of overseeing the local reviews, learning from national reviews, and translating these findings into system improvements, which can include updating policies and organising training.

This work will take place alongside Safeguarding Adults Reviews (which the Safeguarding Adults Board has a legal duty to undertake) so that lessons, particularly about issues such as Transitions, can be learned together.

Reviews, either local or national, are a critical part of improving safeguarding practice. The local responsibilities around referring to the National Panel can be found at Appendix B. The recommendations from the local and national reviews can improve how we do things (our policies) and highlight areas where practice and process need to be changed for practitioners.

The group will also be responsible for initiating audits to make sure that learning has been embedded and ensure the effectiveness of existing policies or practices.

The Safeguarding Practice Improvement Activity Group will work closely with the Insights Activity Group to highlight areas that need to be monitored, or to provide intelligence that might need testing.

The Safeguarding Practice Improvement Activity Group will be Chaired by the Independent Scrutineer and supported by the Clinical Commissioning Group.



Insights and Risks

Understanding the current Enfield, London-wide and national risks is an important part of making sure that we are prepared for any new challenges. This area of work can also tell us about how well our current arrangements are meeting current challenges.

Through the Insights Activity Group, we will look at data held by the local authority teams (social care, public health and community safety), alongside local Health and Police data, to understand local risks. We will also look at trends over time, as well as London-wide and national data to understand what and why things are happening.

We will work with community organisations and teams who are working on the ground to include any soft intelligence they might have about risks that do not appear in the data sets.

The Insights Activity group will have a critical assurance role, considering information and intelligence at scale. It may need to undertake wider research to understand causes of trends in the data.

The Insights Activity Group will be Chaired and supported by the Police.

Vulnerable Young People

The Vulnerable Young People Activity Group (VYP) combines oversight of Enfield's response to Missing Children, those subject to Sexual and Criminal Exploitation, children privately fostered, Trafficking, Modern Slavery, FGM, and children involved with gangs or other harmful practices.

A number of specific groups focus on different elements of this work. The role of the VYP is to maintain a strategic overview and constructively challenge, whilst coordinating delivery of objectives.

The group has been working in its current form since March 2018, and is providing essential co-ordination in tackling many complex issues.

The Vulnerable Young People Activity Group is Chaired and supported by Enfield Council (Community Safety):

- Missing Children
- Sexual and Criminal Exploitation
- Children privately fostered
- Trafficking
- Modern Slavery
- FGM
- Children involved with gangs
- Other harmful practices

Child Death

The responsibility for making sure that child death reviews take place is held by Enfield Council and the NHS Enfield Clinical Commissioning Group.

Child Death Review arrangements should cover at least 60 child deaths in an area per year. This is to support better learning from child deaths in order to improve care and outcomes.

This will involve a Child Death Overview Panel being established across Enfield, Haringey, Barnet, Islington and Camden.

Enfield Child Death meetings will be established to make sure local learning is quickly acted upon, and to ensure that parents and family have an opportunity to be part of the process once all investigations have been completed.

Work in this area is being co-ordinated by the Enfield Council Public Health team.

Working Together

In Enfield, the safeguarding partners will work with other local groups and multi-agency meetings, to make sure our efforts make a real difference, and are not duplicated.

There are a number of different areas of work which these arrangements will be able to refer to, or may request information from. There may also be opportunities to develop joint areas of work. The groups include:

- Safeguarding Adults Board
- Safer Strong Communities Board
- Health and WellBeing Board
- Safeguarding Information Panel, High Risk Panel, Fire Prevention group
- Multi-Agency Criminal Exploitation (MACE) meeting
- Enfield Targeted Youth Engagement Board (ETYEB)
- Domestic Abuse or Violence Against Women and Girls Strategic Group
- Multi-Agency and Risk Assessment Conference (MARAC) meeting
- Multi-Agency Public Protection Arrangements (MAPPA) meeting

Scrutiny

Scrutiny of Enfield arrangements to keep children and young people safe is a critical part of these new arrangements. In addition to existing measures (including, Section 11 audits, multi-agency audits, independent Chair) we will add:

- An Independent Scrutineer, who will chair the Executive Group, and ask key questions during the Partnership meeting (What have we done? How well have we done it? Is anybody better off?). They will also provide their own report on progress made during the year, and how they feel the arrangements are working.
- Young Scrutineers will be recruited to work with the Independent Scrutineer and help shape the work programme of the Activity Groups and to co-produce innovations and developments in these arrangements
- We will also work closely with colleagues from Adults services and from neighbouring areas, and with others to annually review and improve our scrutiny activity.

Resourcing these arrangements

Local partners make contributions to the work of the safeguarding arrangements. These contributions will continue to be made to the same level, at least for the 2019/20 financial year.

The discrete contributions made in 2018/19 were:

Local Authority	£48,000
NHS Enfield Clinical Commissioning Group	£36,600
Metropolitan Police Service	£5,000
NHS Barnet, Enfield, Haringey, Mental Health Trust	£3,000
NHS North Middlesex University Hospital Trust	£3,000
NHS Royal Free Trust	£3,000
National Probation Service	£1,000
London CRC	£1,000
London Fire Brigade	£500
CAFCASS	£500

For the three safeguarding partners, where they are the lead for an Activity area, they will support and facilitate the work with the Chair being accountable to the Executive Group.

The Executive Group will be responsible for making sure the Activity groups have people with the correct skillset attending, and for delegating appropriate authority to the Chairperson of these groups to direct and lead the work.

The work of these arrangements, alongside the work of the Safeguarding Adults Board, will be co-ordinated by a Safeguarding Partnerships Team.

Delegation and Dispute Resolution

Delegation

The Executive group will delegate responsibilities for activities to the respective Activity groups. They will ensure that Chairs and members of groups are appropriately empowered to autonomously lead on these areas of work.

Dispute Resolution

Where the safeguarding partners disagree on an issue, or where members of Activity groups disagree, the following steps will be taken:

- A specific meeting will be called with the partners and Chair to address the matter. The Chair will mediate;
- If this is unsuccessful, the Chair will have final say. In extraordinary circumstances, legal advice may be sought by the Chair to assist in the matter.

Review and Reporting

In order to ensure transparency for children, families and all practitioners about the work we are doing, the safeguarding partners will publish a report every year.

The report will set out what we have done (including information on child safeguarding practice reviews) and check how well these arrangements are working, identifying any areas of improvement.

In addition, the report will also include:

- evidence of the impact of the work of the safeguarding partners and relevant agencies, including training, on outcomes for children and families from early help to looked-after children and care leavers;
- an analysis of any areas where there has been little or no evidence of progress on agreed priorities;
- a record of decisions and actions taken by the partners in the report's period (or planned to be taken) to implement the recommendations of any local and national child safeguarding practice reviews, including any resulting improvements;
- ways in which the partners have sought and utilised feedback from children and families to inform their work and influence service provision.

The Independent Scrutineer will provide a report on the year's activity, and suggestions for improving arrangements in Enfield.

The report will be shared with all partner agencies. It will be published on the Council website, with notifications sent via Twitter and Facebook.

Year 1 - We will

In the first year, these safeguarding arrangements will:

- Ensure that the Executive Group meet every two months for this first year to ensure the transition to these arrangements is smooth; the meeting will then move to every three months.
- Develop each Activity group with the correct membership and autonomy to fulfil their functions.
- Recruit 8 to 10 children and young people to work with us to scrutinize and support arrangements.
- Implement Section 11 audit.
- **Community Awareness Raising Activity Group:** Complete an awareness raising toolkit for Safeguarding Adults and Children, and develop methodology to engage with the community (face-to-face, and online).
- **Insights Activity Group:** Develop the Intelligence products for abuse in Enfield (Adults and Children's) that will support the horizon scanning to identify risks and threats.
- **Practice Improvement Activity Group:** Develop methods to test that learning is being embedded into practice, using the lived experience of the child, adult, family and wider community.
- **Vulnerable Young People:** Begin working to the Safeguarding adolescents from exploitation strategy.
- **Child Death Overview Panel:** Deliver the Child Death Overview Panel across the 5 north London boroughs (Barnet, Enfield, Haringey, Islington, Camden).
- Ensure any learning from child deaths informs Practice improvement work.

For further information please contact...

The Safeguarding Partnership Team by:

Emailing:

 SafeguardingEnfield@enfield.gov.uk

Or visit our website:

 www.enfield.gov.uk/SafeguardingEnfield

We have lots of helpful information and resources for young people, families and professionals.

Or you can call us on:

 **020 8379 2270 or 020 8379 2578**

Please remember to Like us on Facebook and follow us on Twitter.

 **SafeguardingEnfield**  **#SafeguardingEnfield**



If you are worried about a child or young person please talk to us:

See it, say it, stop it!

Call **020 8379 5555** (9am to 5pm)
or **020 8379 1000** (at other times);
always call **999** in an emergency.

Appendix A

Statutory basis*

The purpose of these local arrangements is to support and enable local organisations and agencies to work together in a system where:

- children are safeguarded and their welfare promoted
- partner organisations and agencies collaborate, share and co-own the vision for how to achieve improved outcomes for vulnerable children
- organisations and agencies challenge appropriately and hold one another to account effectively
- there is early identification and analysis of new safeguarding issues and emerging threats
- learning is promoted and embedded in a way that local services for children and families can become more reflective and implement changes to practice
- information is shared effectively to facilitate more accurate and timely decision making for children and families.

*Working Together 2018, Chapter 3 – Multi-Agency Safeguarding Arrangements

Appendix B

Key points about National Panel and Reviews

The purpose of reviews of serious child safeguarding cases, at both local and national level, is to identify improvements to be made to safeguard and promote the welfare of children.

Learning is relevant locally, but it has a wider importance for all practitioners working with children and families and for the government and policy-makers. Understanding whether there are systemic issues, and whether and how policy and practice need to change, is critical to the system being dynamic and self-improving.

The responsibility for how the system learns the lessons from serious child safeguarding incidents lies at a national level with the Child Safeguarding Practice Review Panel (the Panel) and at local level with the safeguarding partners.

The Panel is responsible for identifying and overseeing the review of serious child safeguarding cases which, in its view, raise issues that are complex or of national importance.

Locally, safeguarding partners must make arrangements to identify and review serious child safeguarding cases which, in their view, raise issues of importance in relation to their area. They must commission and oversee the review of those cases, where they consider it appropriate for a review to be undertaken.

From Reviews, Working Together 2018

Appendix C

Terms of References

Executive Group

The Group brings together the Executive officers from the Safeguarding Partners, who provide leadership and oversight of these arrangements.

Location: Enfield Civic Centre
Chair: Independent Scrutineer
Support: Enfield Council

Meet every:

Two months

Chair responsibilities:

- Facilitate Executive Activity Group
- Mediate in disagreements

Members responsibilities:

- Ensuring arrangements are working and Children are being kept Safe in Enfield
- Hold each other to account to ensure safeguarding children practices are robust
- Ensure effective resources are in place to meet challenges and work. 2019/20 contributions provide funding for one local learning review for the year; if further local learning reviews become necessary, the funding of these will need to be agreed by the Executive Group
- Ensure that all work is undertaken in line with Principles
- Attend meetings or identifying suitable deputies.

Practicalities:

- Meetings will be accessible and enable participation remotely
- Two key points will be shared with Activity Groups, which show how the meeting has helped to safeguard children and young people.

Delegation:

- This group will formally delegate responsibilities for activities to the Groups.

Dispute Resolution:

- Where the safeguarding partners disagree on an issue, the following steps will be taken:
 - 1) A specific meeting will be called with the partners and chair to address the matter, with the chair mediating.
 - 2) If this is unsuccessful, the Chair will have final say, subject to legal advice.

Safeguarding Children Partnership Meeting Terms of Reference

This meeting brings together the Safeguarding Partners and members of relevant agencies with a focus on system improvements.

Location: Enfield Civic Centre

Chair: Safeguarding Partner

Support: Safeguarding Partnership Team, Enfield Council

Each Activity group will work to the principles of the arrangements. The Safeguarding Partnership Meeting will:

Meet every:

Six months

Have members who are:

Independent Scrutineer, system leaders, relevant safeguarding agencies, lay members, young scrutineer, representatives from education settings and health care settings.

Chair responsibilities:

- Highlight issues with attendance and progress to Executive Group
- Ensure wider safeguarding partnership and relevant agencies, have voice in assurance and improvement of Safeguarding arrangements.

Members responsibilities:

- Attend meetings or identify suitable deputies
- Ensuring actions are completed on time
- Champion Safeguarding Children's in their organisations and teams.

Practicalities:

- Meetings will be accessible and enable participation remotely
- Two key points will be shared with Executive and other groups, which show how the meeting has helped to safeguard children and young people.

Community Awareness Raising Activity Group Terms of Reference

Preventing abuse in Enfield by raising awareness: showing individuals and communities how they can help by recognising possible abuse and how to report their concerns.

Representing the voice of adults at risk and children in safeguarding work in Enfield.

Adults & Children Focus:

Lead: Lay Person

Support: Enfield Council, Safeguarding Partnerships Team

Each Activity group will work to the principles of the arrangements. The Community Awareness Raising Activity group will:

Meet every:

Two months

Have members who are:

Enfield Residents, and users of services (both children and adults).

Chair responsibilities:

- Ensuring the group achieves milestones and completes tasks
- Highlight issues with attendance and progress to Executive Group
- Identify new opportunities or information that Executive Group need to consider.

Members responsibilities:

- Attend meetings or identifying suitable deputies
- Ensuring actions are completed on time.

Practicalities:

- Meetings will be have conference calling, where practicable.
- Two key points will be shared with the Executive and other groups, which show how the meeting has helped to safeguard children and young people
- The meeting must have representation from adults and children's to be quorate.

Insights Activity Group Terms of Reference

Prevent Abuse and improve services by:

Horizon scanning data/intelligence to identify current and future risks to the effectiveness of the arrangements.

Adults & Children Focus:

Lead: Police

Support: Police

Meet every:

Three months

Have members who are:

Analysts, strategic officers (to make recommendations on how risks might be addressed), researchers, and members of local voluntary sector/teams who may hold soft intelligence.

Chair responsibilities:

- Highlight issues with attendance and progress to Executive Group
- Ensuring the group takes a task and finish approach – the data and intelligence must lead to tangible actions that can be progressed; using system models such as: Plan, Protect, Prepare; Pursue and/ or Intelligence, Prevention, Enforcement, Risk.
- Steer group to develop Analytical products based on local, regional and national datasets and intelligence; initiating research to support decision making as needed.
- Identify new risks, opportunities or information that Executive Group need to consider.

Members responsibilities:

- Attend meetings or identify suitable deputies
- Ensuring actions are completed on time.

Practicalities:

- Meetings will be accessible and enable participation remotely
- Two key points will be shared with the Executive and other groups, which show how the meeting has helped to safeguard children and young people
- The meeting must have representation from adults and children's to be quorate.

Safeguarding Practice Improvement Activity Group

Terms of Reference

Learning from experience and improve services by:

Effectively reviewing and learning from cases and using this information to improve practice, systems and our arrangements.

Adults & Children Focus:

Lead: Independent Chair

Support: NHS Enfield Clinical Commissioning Group

Each Activity group will work to the principles of the arrangements. The Safeguarding Practice Improvement Activity Group will:

Meet every:

Three months

Have members who are:

Practice leaders, community members, policy and learning officers.

Chair responsibilities:

- Highlight issues with attendance and progress to Executive Group
- Ensure learning opportunities (audits, reviews) are developed to effectively improve local systems
- Work with group members to foster a culture of positive learning and improvement across Enfield.

Members responsibilities:

- Attend meetings or identify suitable deputies
- Ensuring actions are completed on time
- Champion Safeguarding improvements in their organisations and teams.

Practicalities:

- Meetings will be accessible and enable participation remotely
- Two key points will be shared with the Executive and other groups, which show how the meeting has helped to safeguard children and young people
- The meeting must have representation from adults and children's to be quorate.

Vulnerable Young People Group Terms of Reference

Protect Children and Young People by:

Ensuring we have focussed actions to prevent abuse against vulnerable young people.

Safety:

Lead: Enfield Council

Support: Enfield Council

Each Activity group will work to the principles of the arrangements. The Vulnerable Young Peoples Activity Group will:

Meet every:

Three months

Have members who are:

Officers who work with vulnerable young people from the Local Authority (including Children's Services, Community Safety), Metropolitan Police Service, NHS teams, including Clinical Commissioning Group, and appropriate relevant agencies.

Chair responsibilities:

Highlight issues with attendance and progress to Executive Group.

Members responsibilities:

- Attend meetings or identify suitable deputies
- Ensuring actions are completed on time
- Maintain relationship between groups responding to Missing Children, those subject to Sexual or Criminal Exploitation, children privately fostered, Trafficking, Modern Slavery, FGM, and children involved with gangs or other harmful practices.
- Ensure opportunities to improve are highlighted to Executive Group
- Maintain a good understanding of National and Regional and local policies and practices.

Practicalities:

- Meetings will be accessible and enable participation remotely
- Two key points will be shared with the Executive and other groups, which show how the meeting has helped to safeguard children and young people.

Appendix D

Relevant Agencies

- Barnet, Enfield and Haringey Mental Health NHS Trust
- BMI (The Cavell Hospital & Kings Oak Hospital)
- CAFCASS
- Educational Establishments, other than Schools – we have 15, including 9 Children’s Centres
- Enfield Children’s and Young Peoples Service (ECYPS) – representing the 3rd sector. Enfield has over 1000 3rd sector organisations who work with children and young people and their families, ranging from sports clubs, uniformed groups (e.g. Scouts), social care and community groups
- GP practices, we have 47 in Enfield
- London Ambulance Service
- London CRC
- London Fire Brigade
- North Middlesex University NHS Trust
- Probation
- Royal Free London NHS Foundation Trust
- Special healthcare providers, including pharmacy, dental practices and optometrists

- The Priory Hospital North London
- Department of Work and Pensions
- Schools (68 Primary, 20 Secondary, 7 Special and 6 Independent schools; details listed)

Primary Schools

- Alma Primary School
- Bowes
- Bowes Primary
- Brettenham Primary
- Brimsdown Primary School
- Bush Hill Park Primary School
- Capel Manor Primary School
- Carterhatch Infant School
- Carterhatch Junior
- Chase Side Primary School
- Chesterfield Primary School
- Churchfield Primary
- Cuckoo Hall
- De Bohun Primary School
- Delta Primary School
- Eastfield Primary School
- Eldon Primary
- Enfield Heights Academy
- Eversley Primary
- Firs Farm Primary
- Fleecefield Primary School
- Forty Hill CE Primary School
- Freezywater St George’s

- Galliard Primary School
- Garfield Primary School
- George Spicer Primary School
- Grange Park Primary
- Hadley Wood
- Hazelbury Primary School
- Hazelwood Schools
- Highfield Primary School
- Honilands Primary School
- Houndsfield Primary
- Keys Meadow Primary
- Kingfisher Academy
- Latymer All Saints CE Primary School
- Lavender Primary
- Meridian Angel
- Merryhills Primary
- Oakthorpe Primary
- One Degree Academy
- Our Lady of Lourdes Primary School
- Prince of Wales Primary School
- Raynham Primary School
- Southbury Primary School
- St Andrew’s CE Primary School Enfield
- St Andrew’s CE Primary School Southgate
- St Edmund’s RC Primary School
- St George’s RC Primary School

- St James’ CE Primary School
- St John & St James’ CE Primary School
- St John’s CE Primary School
- St Mary’s RC Primary School
- St Matthew’s CE Primary School
- St Michael at Bowes CE Junior School
- St Michael’s CE Primary
- St Monica’s Catholic Primary School
- St Paul’s CE Primary School
- Starks Field Primary School
- Suffolks Primary School
- The Raglan School
- Tottenham Infant School
- Walker Primary School
- West Grove Primary School
- Wilbury Primary School
- Wolfson Hillel Primary School
- Woodpecker Hall Academy
- Worcesters Primary School

Secondary Schools

- Ark John Keats Academy
- Aylward Academy
- Bishop Stopford’s CE School
- Broomfield School
- Chace Community School
- Edmonton County
- Enfield County Upper School
- Enfield Grammar

- Heron Hall Academy
- Highlands School
- Kingsmead School
- Lea Valley Academy
- Nightingale Academy
- Oasis Academy
- Southgate School
- St Anne’s Catholic High School for Girls (Upper)
- St Ignatius College
- The Latymer School
- Virtual School for LAC & HEART Manager
- Winchmore School

Special Schools

- Durants School
- Fern House
- Oaktree School
- Orchardside School
- Russet House School
- Waverley School
- West Lea School

Independent Schools

- Grange Park Prep School
- Keble Prep School
- Palmers Green High School
- Salcombe Prep School
- St John’s School
- Vita Et Pax Prep School

Safeguarding ENFIELD



Website
www.enfield.gov.uk/SafeguardingEnfield



Facebook
Safeguarding Enfield



Telephone
020 8379 2270 or 020 8379 2578



Twitter
#SafeguardingEnfield