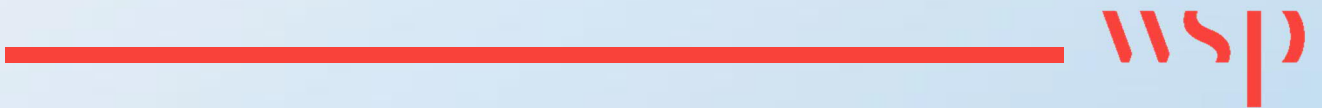


Appendix B

EVIDENCE BASE RESULTS



THE MAYOR'S TRANSPORT STRATEGY (MTS)

The following images of relevant insights taken from the MTS

FIGURE 11A: VOLUME OF CAR TRIPS THAT COULD BE MADE BY WALKING, CYCLING AND PUBLIC TRANSPORT

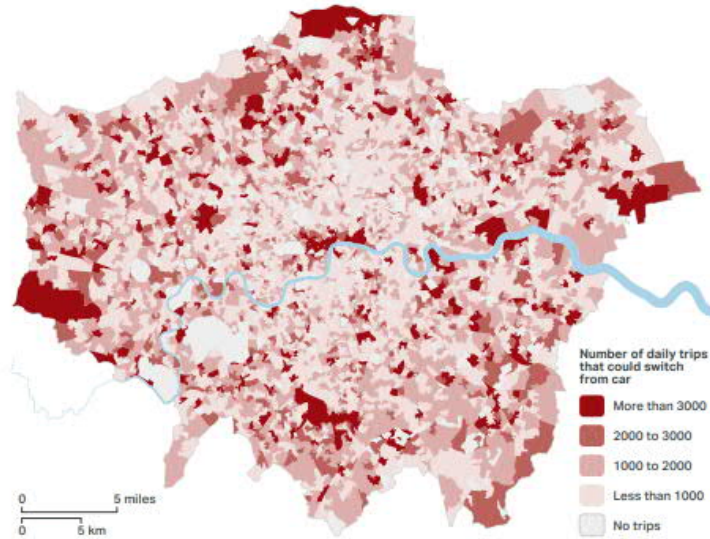


FIGURE 11B: LONDON RESIDENTS' WILLINGNESS TO REDUCE THEIR CAR USE

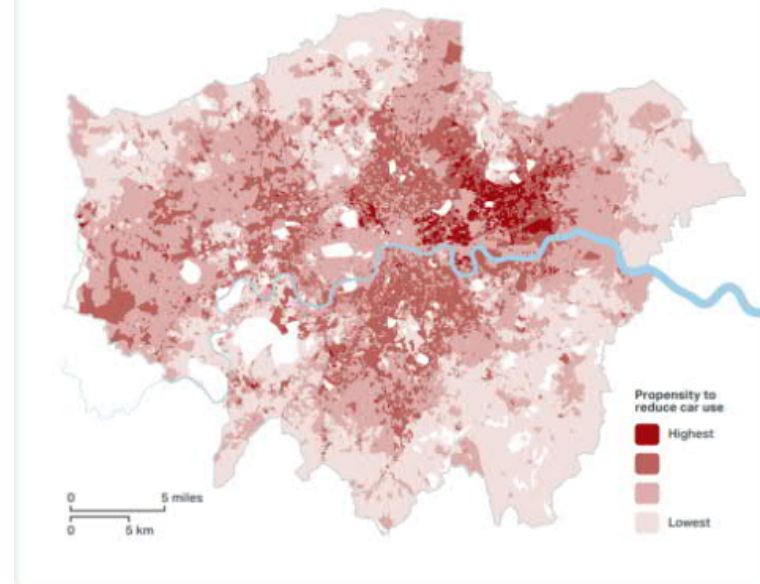


FIGURE 5: JOURNEY DELAYS ACROSS LONDON

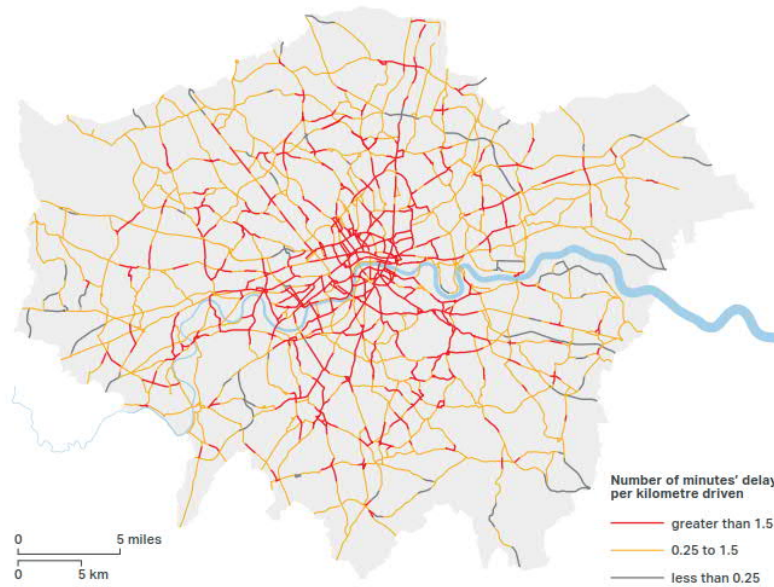


FIGURE 4: RECOMMENDED LONDON-WIDE STRATEGIC CYCLE NETWORK TO 2041

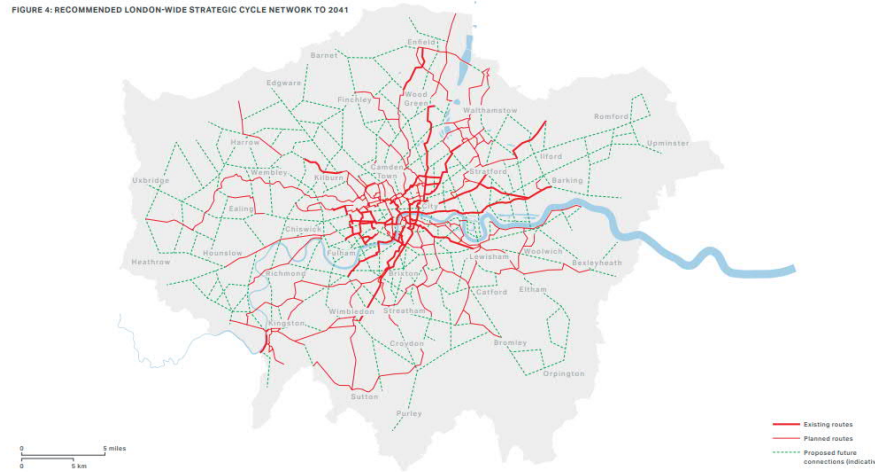


FIGURE 26: CROSSRAIL 2 ROUTE (CONSULTATION 2015)

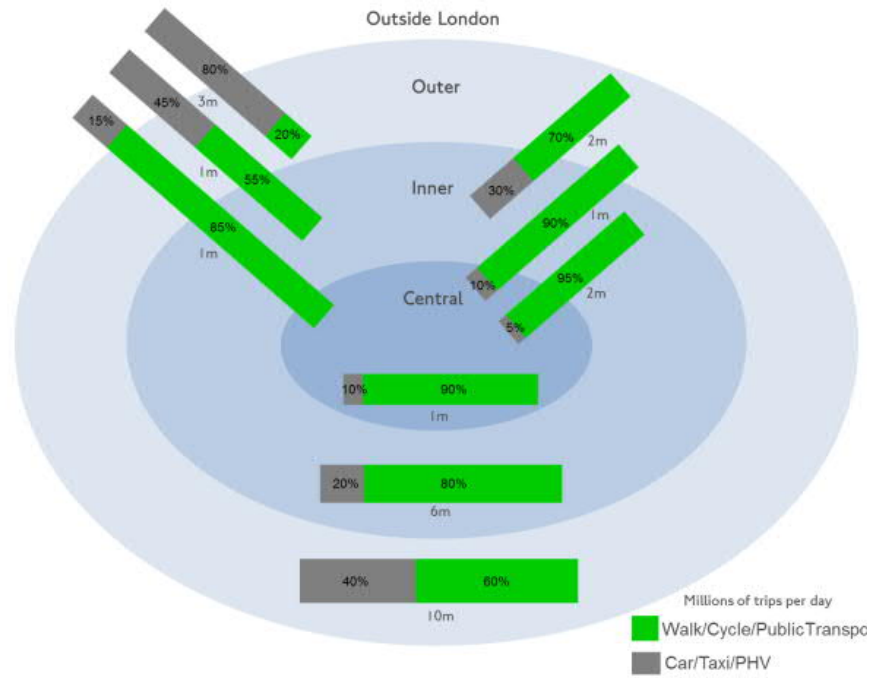


FIGURE 31: STRATEGIC RAIL NETWORK





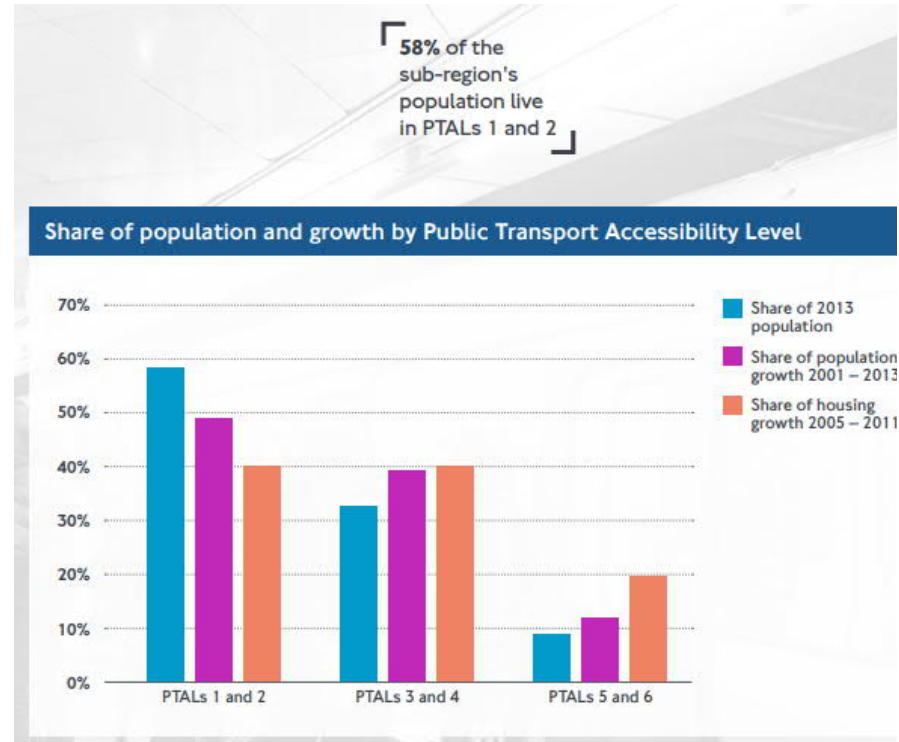
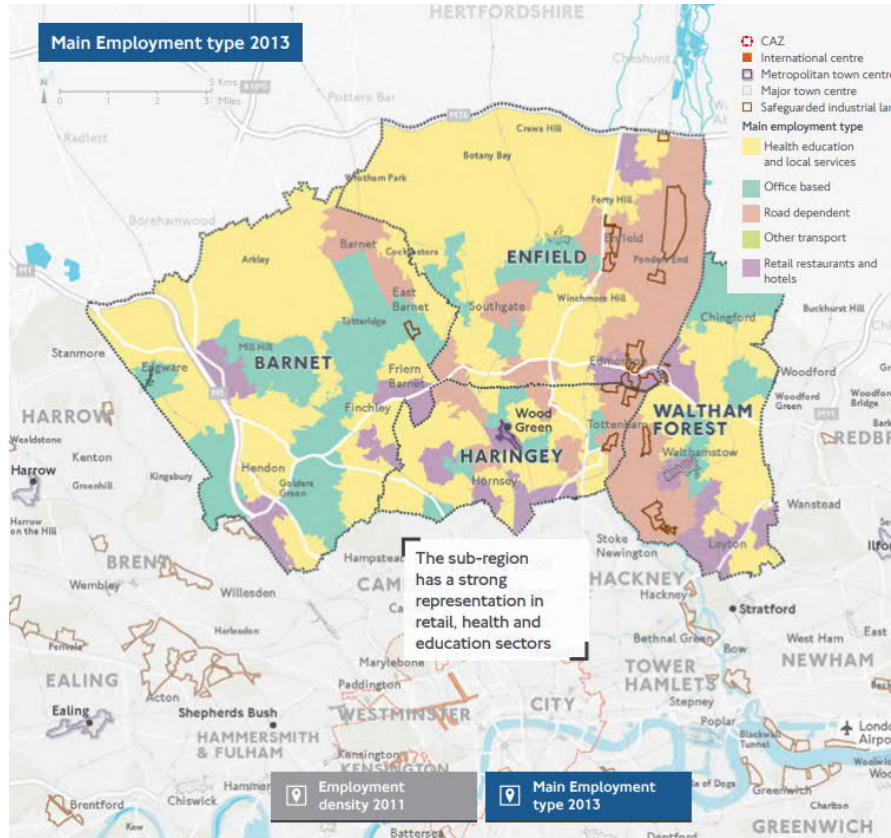
Figure 14 Mode share of trips by origin and destination, 2015



Source: City Planning

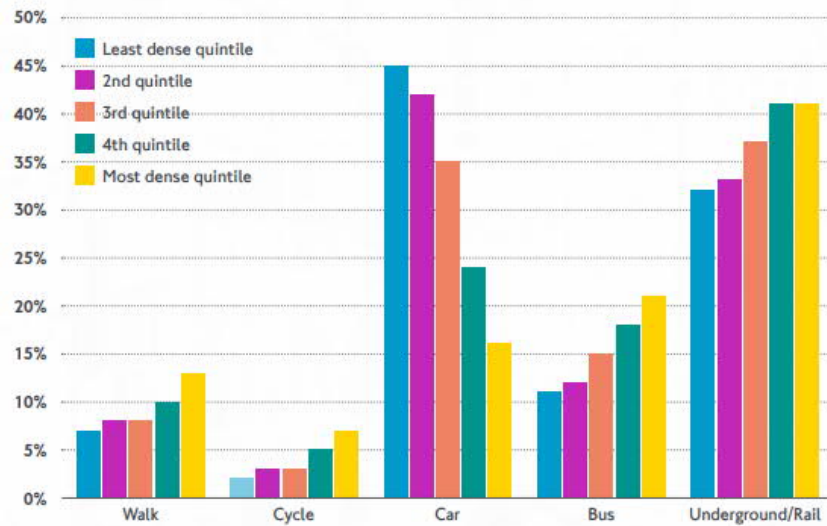
THE NORTH LONDON SUB-REGIONAL PLAN

The following images of relevant insights taken from the North London sub-regional plan

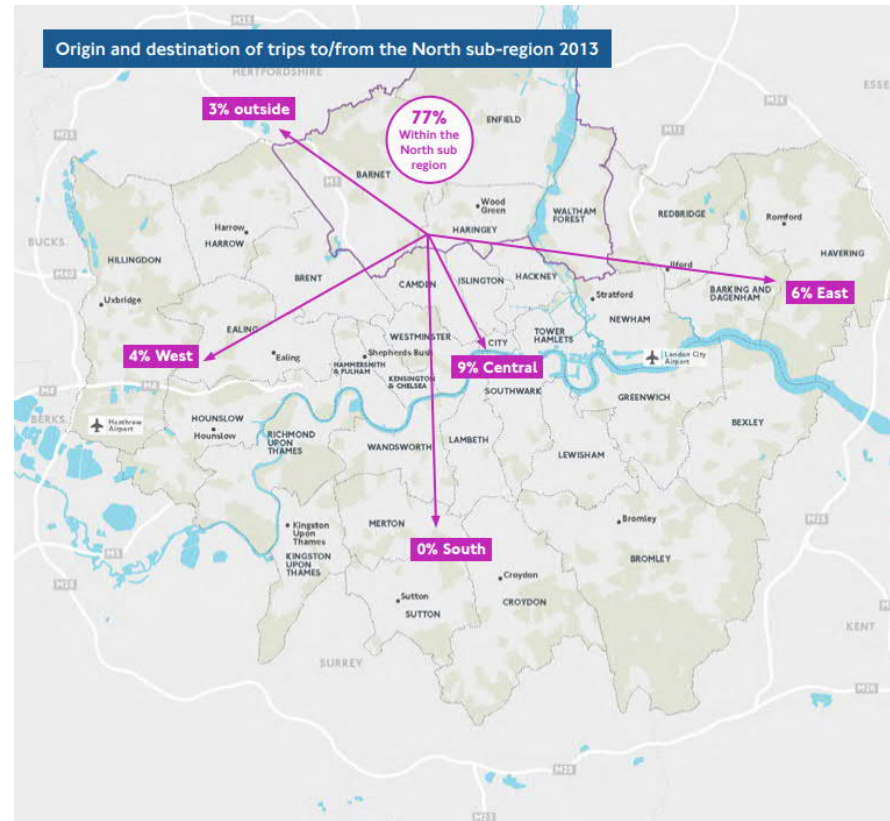


People that live in London's most dense areas are **three times less likely** to travel to work by car

Population density and mode of travel to work 2011 – Greater London



Origin and destination of trips to/from the North sub-region 2013





ENFIELD TRANSIT CORRIDOR STUDY

The following images of relevant insights taken from the Enfield Transit Corridor Study

Figure 9 Jobs (2011 estimates)

